



**TECHNICAL ADVISORY COMMITTEE
AGENDA**

DATE: **Thursday, October 22, 2020**
TIME: **10:00 a.m. – 12:00 p.m.**
LOCATION : **Zoom Meeting at ICTC Offices**

Chairperson: County of Imperial

Vice-Chair: City of Brawley

Individuals wishing accessibility accommodations at this meeting, under the Americans with Disabilities Act (ADA), may request such accommodations to aid hearing, visual, or mobility impairment by contacting ICTC offices at (760) 592-4494. Please note that 48 hours advance notice will be necessary to honor your request.

Due to the COVID-19 and Executive Order N-25-20, teleconferencing is recommended for the public, however measures will be taken to have access for those who wish to participate in person while still abiding by local, state and federal mandates. Following is teleconference information.

To join the Zoom Meeting by computer using video and audio, please click on the following link:
<https://zoom.us/j/92542569721?pwd=Y091S2VFSGM3OTBkZ2NYU2JHc0NDQT09>

The meeting ID and Password are below in the event you may need them.

To join by phone please dial (669) 900-9128
Meeting ID: 925 4256 9721#
Password: 310318#

PUBLIC COMMENTS

Any member of the public may address the Committee for a period not to exceed three minutes on any item of interest not on the agenda within the jurisdiction of the Committee. The Committee will listen to all communication, but in compliance with the Brown Act, will not take any actions on items that are not on the agenda.

DISCUSSION/ACTION ITEMS

1. Introductions
2. Adoption of Minutes for September 24, 2020 *Action*
3. Southern California Association of Governments (SCAG) Presentation: 20 minutes
SCAG Climate Adaptation Framework
Presented by: Lorianne Esturas, SCAG Assistant Regional Planner
4. ICTC Updates / Announcements 10 minutes
Presented by ICTC Staff
 - a. Transit Planning Updates
 - b. Transportation Planning Updates
-Regional Climate Action Plan Update

**CITIES OF BRAWLEY, CALEXICO, CALIPATRIA, EL CENTRO, HOLTVILLE, IMPERIAL, WESTMORLAND,
IMPERIAL IRRIGATION DISTRICT AND COUNTY OF IMPERIAL**

- c. FFY 2019-20 Programmed Project Updates
 - d. LTA Bond Updates: 2012 & 2018
5. SCAG Updates / Announcements 10 minutes
Presented by SCAG staff
 6. Cities and County Planning / Public Works Updates 10 minutes
All
 7. Caltrans Updates / Announcements 10 minutes
Presented by Caltrans Staff
 8. General Discussion / New Business 5 minutes

All
 9. Adjournment

The next meeting of the ICTC TAC meeting is tentatively scheduled for November 19, 2020. For questions you may call Marlene Flores at (760) 592-4494 or contact by email at marleneflores@imperialctc.org



1503 N. IMPERIAL AVE., SUITE 104
 EL CENTRO, CA 92243-2875
 PHONE: (760) 592-4494
 FAX: (760) 592-4410

TECHNICAL ADVISORY COMMITTEE
DRAFT MINUTES

September 24, 2020

Present:

Guillermo Sillas	City of Brawley
Abraham Campos	City of El Centro
Veronica Atondo	County of Imperial
Jesus Villegas	City of Imperial
Lily Falomir	City of Calexico
Miguel Figueroa	City of Calexico
Joel Hamby	City of Westmorland
Ismael Gomez	IID

Others:

Virginia Mendoza	ICTC
Marlene Flores	ICTC
David Salgado	SCAG
Tyler Salcido	City of Brawley
Gordon Gaste	City of Brawley
Javier Luna	City of El Centro
Christian Rodriguez	City of El Centro
Angel Hernandez	City of El Centro
Othon Mora	City of Imperial
Robert Urena	County of Imperial
Rachel Fonseca	City of Westmorland
Ben Guerrero	Caltrans
Kevin Hovey	Caltrans
Nicky Falvey	Caltrans
George Galvan	Holt Group
Victor Garcia	Holt Group
Bobby Pulido	

Due to the COVID-19 and Executive Order N-25-20, teleconferencing is recommended for the public, however measures will be taken to have access for those who wish to participate in person while still abiding by local, state and federal mandates. Following is teleconference information.

The meeting was called to order at 10:07 a.m. A quorum was present, and introductions were made. There were no public comments made.

1. Introductions
2. A motion was made to adopt the minutes for August 27, 2020 (**Hamby/Falomir**) **Motion Carried.**
3. **ICTC Updates / Announcements**
(Presented by ICTC Staff)
 - a. **Transit Planning Updates-** Virginia Mendoza provided a brief update on transit. Based on the current events surrounding the COVID-19 Pandemic, ICTC is still operating under COVID-19 requirements.
 - b. **Transportation Planning Updates (by Virginia Mendoza and Marlene Flores):**
 - **FY 2020/2021 State and Federal Obligation- Project List**
 - Beginning October 1, 2020 agencies are allowed to move forward with request for authorization (RFA) for CMAQ, STBG and ATP programmed in FY20/2021. A project list was part of the agenda. Agencies provided status of their projects. The project list will be updated monthly and will be emailed with current project status.
4. **SCAG Updates / Announcements (by David Salgado)**
 - **2020 SCAG Sustainable Communities Program (SCP) Grant Program:** SCAG has approved the 2020 SCP grant guidelines. The FY 2020/2021 program will fund projects in the following areas that support and implement the policies and initiatives of the 2020 Regional Transportation Plan/Sustainable Communities Strategy (RTP/SCS), Connect SoCal: Active Transportation & Safety; Housing and Sustainability; Smart Cities, Mobility Innovation & Transportation Demand Management; and Green Region.
 - **Connect SOCAL Approval:** The Regional Council of Southern California Association of Governments (SCAG) on Thursday September 3, 2020 formally adopted a 25-year plan to meet the mobility needs of one of the most robust population and economic centers in the United States.
 - **GO HUMAN CAMPAIGN RE-LAUNCHES In August!!** The advertising campaign is just one of many strategies to support safety across the region, which also include a Safe Driver Twitter chat that was held on August 27.
 - **2020 Local Early Action Planning Grant (LEAP) Program:** The Local Early Action Planning (LEAP) grant program's deadline has been extended to January 31, 2021! You still have time to apply! Jurisdictions who did not apply.
 - **SCAG Aerial Imagery Project 2020 Update:** After numerous meetings to discuss the potential for SCAG to facilitate a new Aerial Imagery flyover project, the County of Imperial has agreed to facilitate a procurement process. This will allow for more funds to be applied to the project to support the procurement. SCAG has set aside \$250,000 for the project and will increase the support by \$50,000 for a total of \$300,000.
5. **Cities and County Planning / Public Works Updates:**
 - Local agencies gave an update on their local projects in progress.

6. Caltrans Updates / Announcements (By: Ben Guerrero)

Local Assistance: Ben Guerrero provided updates on local assistance.

Inactive Projects- As of September 10, 2020, the INACTIVE and FUTURE Inactive list was updated. November 20, 2020 is the deadline to submit Inactive invoices. District 11 must receive accurate and complete invoices to prevent de-obligation of federal funds! Verify on the “Inactive” link shown below for Inactive Project dates.

October 19, 2020 – Highway Safety Improvement Program (HSIP) Cycle 10 Call for Projects (update) Caltrans Division of Local Assistance announced the local HSIP Cycle 10 Call-for-Projects on May 5, 2020. The application deadline is October 19, 2020.

Quality Assurance Program (QAP) – Documentation Expired in 2020- A new list came out and local agencies that need to submit their QAP before the deadline.

Temporary Exception for Requiring “Wet” signature on Invoices- The current process of requiring wet signatures on invoice documents in order to process for payment is temporarily exempted. Until further notice, scanned copies of invoices will be accepted.

For questions, please contact either the Local Area Engineer, Mr. Guerrero, or Local Assistance Program Support Analyst, Alma Sanchez, via email at Alma.Sanchez@dot.ca.gov

Federal Fiscal Year (FFY) 19/20 Requests for Authorization CLOSED! FFY 20/21 Obligations Due! Funding Requests for Authorization (RFA) during this federal fiscal year were due by January 31, 2020. Please continue to transmit all RFA submittals, so that funding approval may continue in mid-October. Note the Obligation Authority (OA) funds for redistribution are dwindling faster than in prior years. Also, make sure that funds are programmed appropriately.

7. General Discussion / New Business

- A brief update for next TAC meeting. ICTC will have a presentation from SCAG on the Regional Climate Adaptation Framework.
- Ms. Mendoza provided a brief update on the first IVRMA TAC meeting that was held earlier in the morning. The meeting went well and it will be held on a monthly basis. Any questions in regards to IVRMA please email Mrs. Villasenor.
- Next TAC meeting will be on October 22, 2020 via Zoom.

8. Meeting adjourned at 11:34 p.m.

Regional Climate Adaptation Framework

Presentation to Imperial County Transportation Commission

SCAG Sustainability Department, Cambridge Systematics, HereLA, and ESA

October 22, 2020

www.scag.ca.gov



- SoCal Climate Adaptation Framework
 - Kicked off in February 2019
 - Funded by Caltrans SB 1 Adaptation Planning Grant
 - Consultant team led by Cambridge Systematics, with ESA, Here LA, and Urban Economics
 - Focus on developing tools and resources for local jurisdictions
 - Outreach and communications strategies
 - Planning guidance and policy model language
 - Vulnerability mapping and assessment tools
 - Transportation and land use scenarios and modeling
 - Wildfire risk, sea level rise, extreme heat, and inland flooding
 - Finance and funding guidance
 - Project ideas, prioritization and tracking

Tools for Adaptation Planning



Public Engagement Tools (all phases)

- Templates
- Communication Strategies

Phase 1 Tools:

- Status of Vulnerability Assessments

- Decision Tree

Phase 2 Tools:

- Interactive Exposure Map

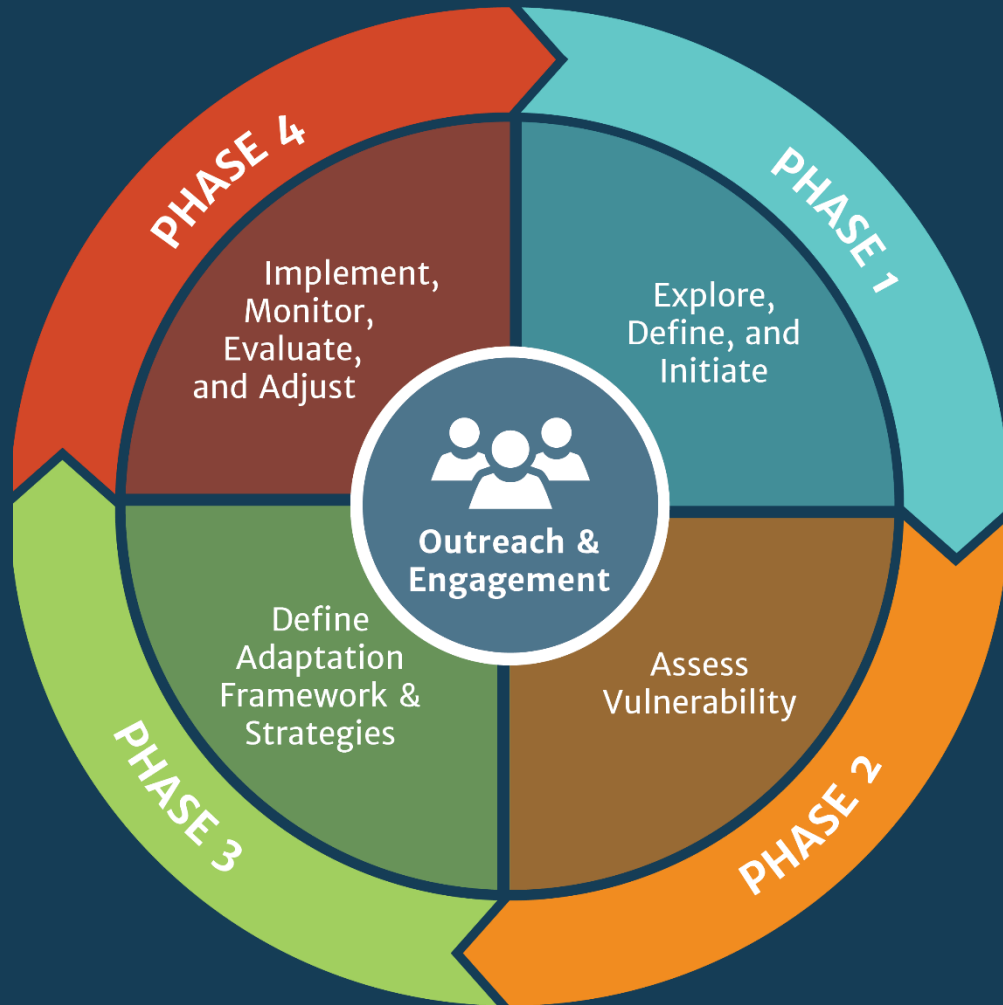
Phase 3 Tools:

- Adaptation strategies worksheet

Phase 4 Tools:

- Status of General Plans
- Model policies
- Project checklist
- Metrics to track progress
- Adaptation project tracking

Southern California Adaptation Planning Guide



- Aligned with phases and steps in the California Adaptation Planning Guide (Draft 2020)
- Highlights content from other key resource documents
- Incorporates examples from within the SCAG region
- Identifies tools and resources for each phase and step

SoCal Adaptation Planning Guide

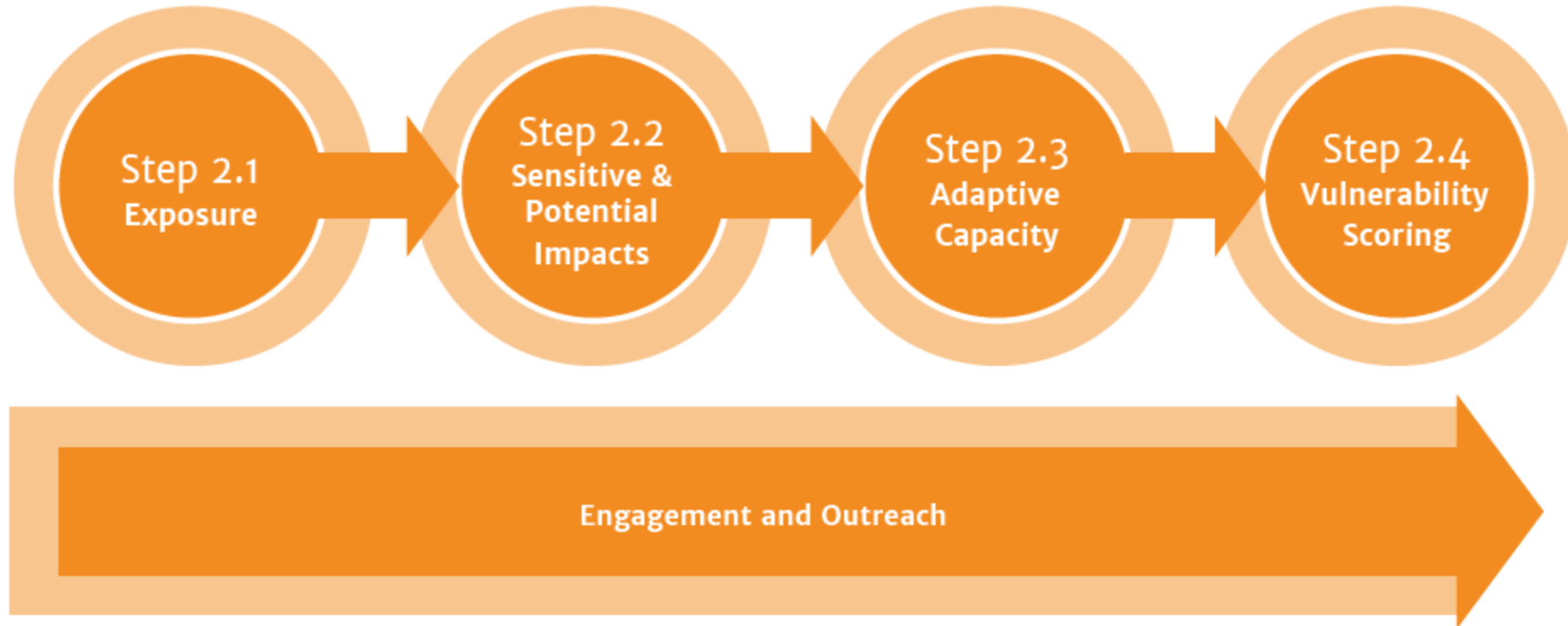


Figure 2.1 – Steps in Phase 2



Step 2.1: Exposure

EXPOSURE	
Materials to Prepare (as suggested by the California APG)	
1	A final list of climate change hazards of concern.
2	An overview of major historical hazard events and the consequences to the community.
3	A description of how each identified climate change hazard is projected to change over the analysis period.
4	Map of projected change in each identified climate change hazard.

Goal: Characterize the community's exposure to current and projected climate hazards.

The California APG provides detailed guidance on assessing how, where and when community assets will be exposed to climate hazards. A brief summary of the guidance is provided here.

For this step, use the same tools and resources identified in Phase 1 for identifying climate hazards to develop a more detailed understanding of climate change effects on the community, including a close look at critical assets and the most vulnerable populations.

Confirm the list of climate change hazards and their effects identified under Step 1.3 by engaging with community asset managers and key stakeholders, including emergency managers and municipal operations and maintenance staff who have knowledge of areas most frequently affected. See Phase 2 Outreach Considerations for different approaches to soliciting input.

Document major climate-related historical events, including when they occurred, where they occurred, and their magnitude. Understanding the historical record of hazards in the community provides context for public engagement concerning the impacts of climate change, and provides insights on how climate change might exacerbate existing hazards in the future. This step may also reveal important trends that can inform interpretation of current conditions and future projections. *See Barstow example.*

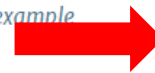
DIFFERENT LEVELS OF DETAIL FOR DIFFERENT PLANS

Exposure assessments have varying levels of detail. An LHMP effort should collect data for location, extent, and previous occurrences for each hazard. For other reporting efforts, such as a safety element, a qualitative description of the community's hazard history may be more appropriate.

Evaluate and describe how each climate hazard is projected to change over the time horizon identified under Step 1.1. The tools available for this task provide future projections of climate hazards at various scales. Some present a range of projection scenarios based on results of various climate models and global emissions scenarios.¹ Often, it is useful to look at a range of projections or multiple scenarios in order to get a full understanding of future climate effects on the community. *See South Bay COG example.*

For many climate change hazards, particularly wildfire, coastal flooding and erosion, and inland flooding, mapping is an important technique for visualizing the exposure of community assets to climate hazards. For large areas over which the effects of climate can vary substantially, mapping helps identify populations and areas of concern, and can help identify where vulnerabilities exist because of asset interdependencies. At a more localized scale, mapping can reveal overlapping hazards that could result in interconnected or cascading impacts, such as coastal flooding events making emergency access roads impassable in the event of an unrelated disaster such as a wildfire. *See Ventura County and Long Beach examples.*

¹ For a discussion of different emissions scenarios and how they affect adaptation planning, see Climate Change Projections in Chapter 2: Background and Setting. Additional information can be found in the California APG and CalAdapt.





Tools and Resources for Determining Climate Change Exposure:

CLIMATE-RELATED HISTORICAL EVENTS

Review your local hazard mitigation plan for a description of historical events.

Step 2.1B in the California APG lists state and federal resources that provide information about historical trends and events related to coastal and storm hazards, temperature, precipitation and snowpack, drought, and wildfires.

CLIMATE HAZARD PROJECTIONS

CalAdapt [<https://cal-adapt.org/>] is an online resource for viewing and downloading data at the census tract scale about projected changes in climate conditions and associated natural hazards, including extreme precipitation, extreme heat, wildfire, sea level rise, inland flooding, and extended drought. In addition to maps, Cal-Adapt includes a variety of visualizations to inform an exposure analysis and provides downloadable data to allow visualizations in other software (e.g., Excel charts).

SCAG MULTIMODAL TRANSPORTATION AND LAND USE ANALYSIS TOOLKIT - PLACEHOLDER

California Heat Assessment Tool (CHAT) is an online tool (<https://www.cal-heat.org/>) that provides detailed information about future extreme heat conditions across California.

Coastal hazards. [https://www.usgs.gov/centers/pcm/science/coastal-storm-modeling-system-cosmos?qt-science_center_objects=0#qt-science_center_objects] The U.S. Geological Survey's Coastal Storm Modeling System (CoSMoS) has detailed maps of coastal flooding under various sea level rise scenarios, storm conditions, and erosion conditions. Use this resource to understand projected changes associated with sea-level rise.

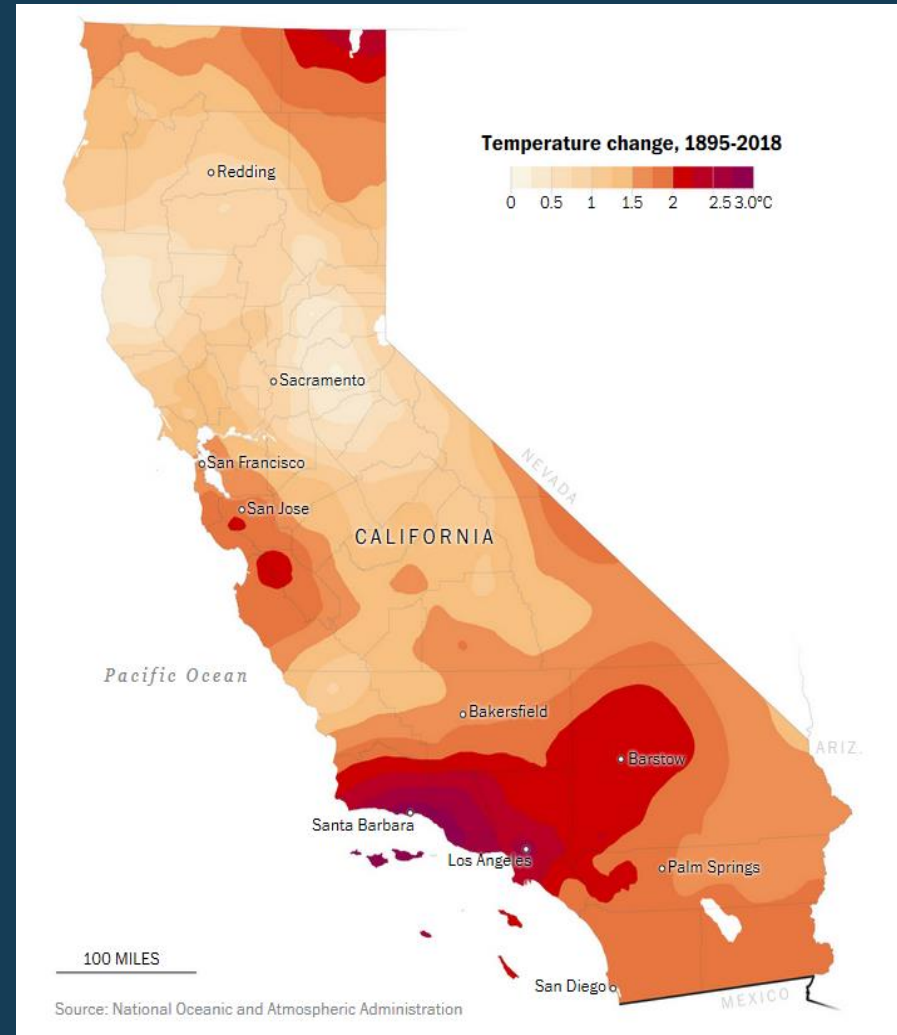
EXPOSURE WORKSHEETS

Regional Resilience Framework. The framework has a worksheet to assist in crafting narrative descriptions of climate hazards. See Appendix B, Worksheet 2.2 Develop Hazard Impact Statements.

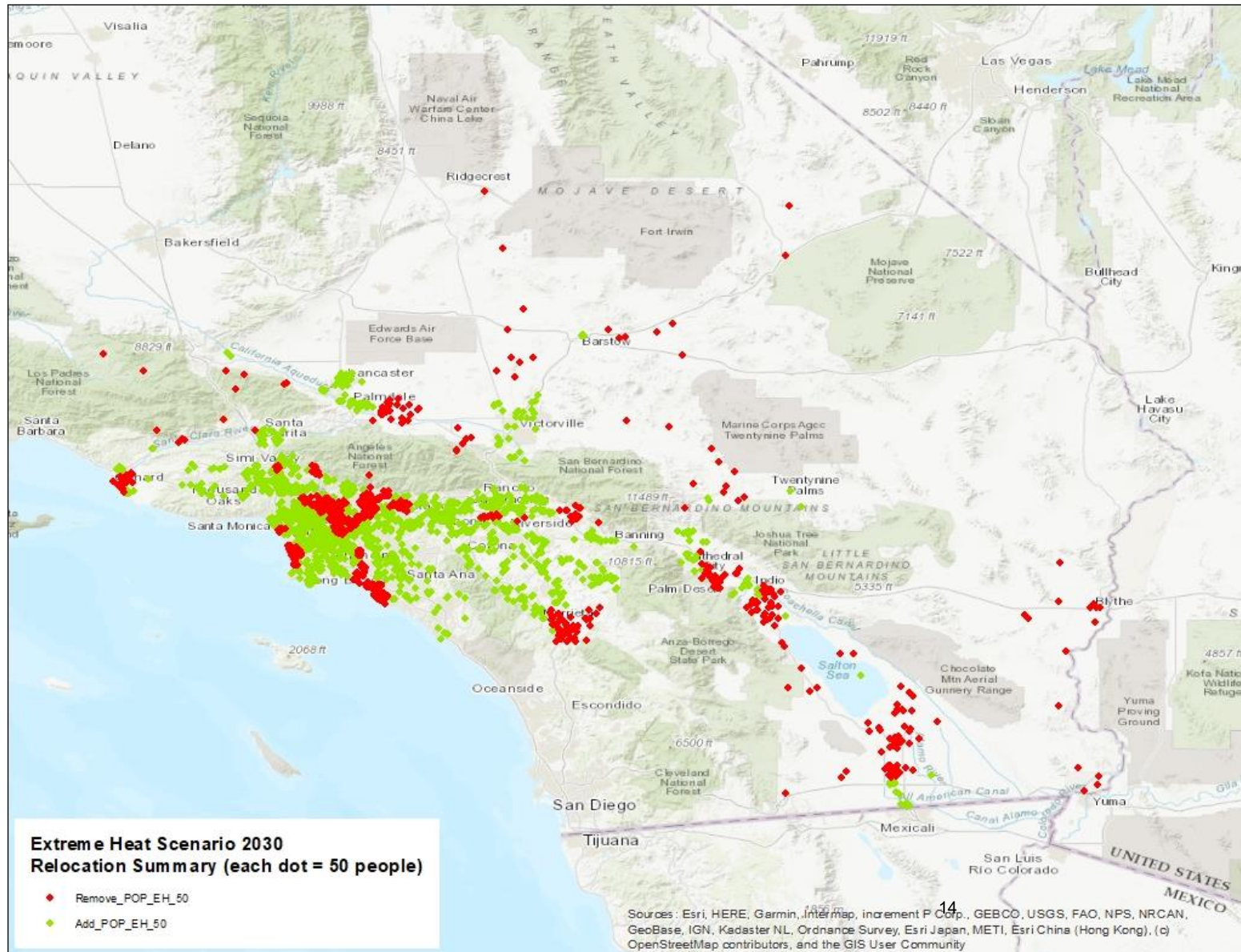
SoCal Adaptation Planning Guide

Summarize Climate Change Impacts Specific to SCAG Region

-  *Extreme Heat*
-  *Sea Level Rise/Coastal Flooding and Erosion*
-  *Severe Storms/Wind*
-  *Inland Flooding*
-  *Drought*
-  *Wildfire*
-  *Air Quality and Vector Borne Diseases*
-  *Landslides*
-  *Pests and Ecological Hazards*



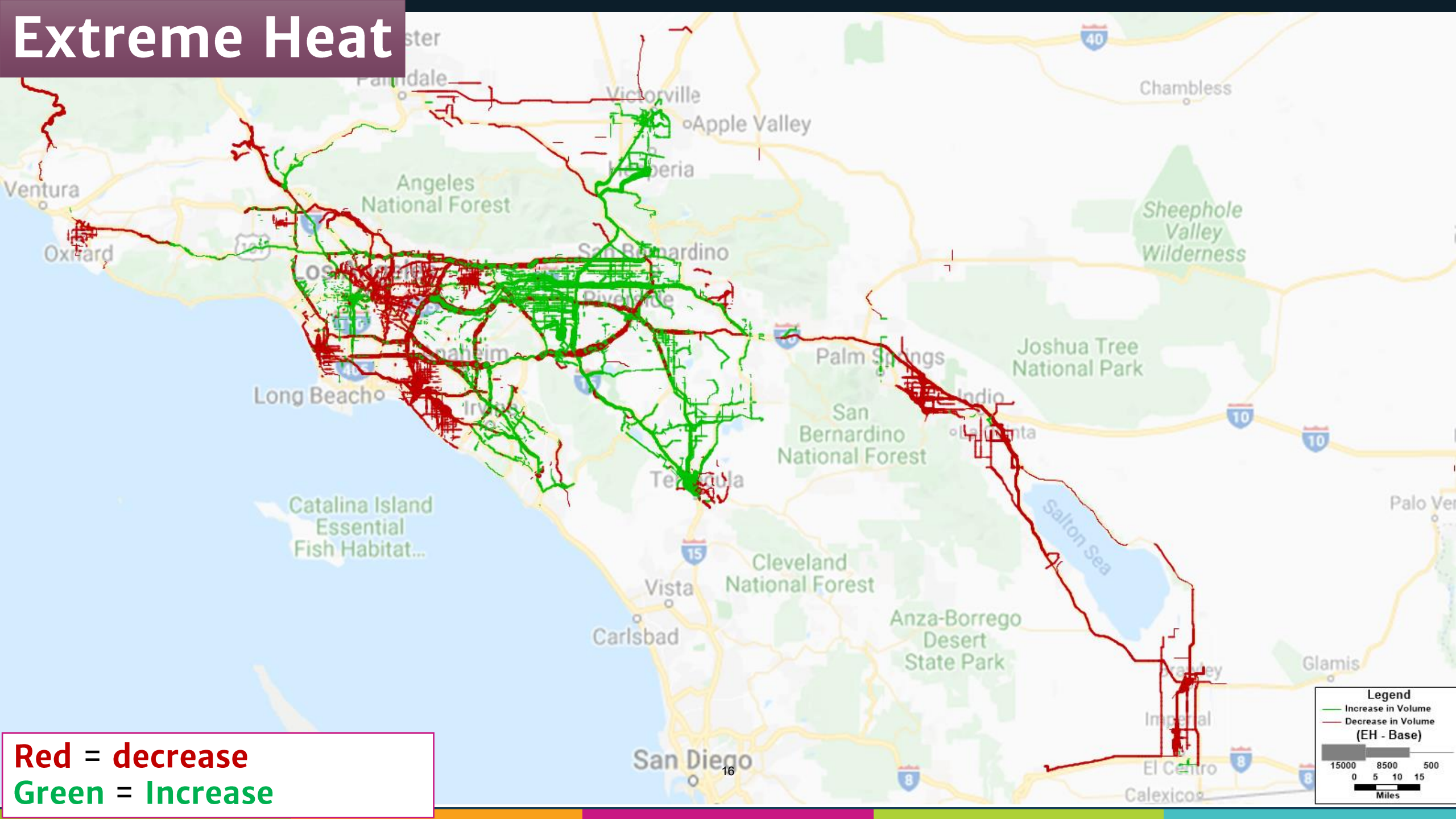
Extreme Heat 2030 – “Business as Usual” Scenario



Extreme Heat Health Events 2030 “Business as Usual” Scenario

Code	County	Base				Extreme Heat				Numeric Difference				Difference			
		Trips	VMT	VHT	VHD	Trips	VMT	VHT	VHD	Trips	VMT	VHT	VHD	Trips	VMT	VHT	VHD
1	Imperial	524,487	6,755,364	120,182	3,519	464,631	6,225,064	110,087	2,874	(59,856)	(530,300)	(10,095)	(645)	-11%	-8%	-8.40%	-18.34%
2	Los Angeles	22,544,031	234,673,126	7,195,893	2,251,895	22,416,901	233,736,930	7,212,870	2,287,800	(127,130)	(936,196)	16,978	35,905	-1%	0%	0.24%	1.59%
3	Orange	8,097,287	79,600,042	2,091,159	549,667	8,074,927	79,553,716	2,099,833	559,164	(22,360)	(46,327)	8,673	9,497	0%	0%	0.41%	1.73%
4	Riverside	6,293,669	77,764,585	1,994,026	575,835	6,347,084	78,077,313	2,078,758	652,601	53,416	312,727	84,732	76,766	1%	0%	4.25%	13.33%
5	San Bernardino	5,560,880	75,639,862	1,572,418	210,823	5,676,502	76,634,464	1,616,612	234,797	115,622	994,602	44,194	23,973	2%	1%	2.81%	11.37%
6	Ventura	2,180,683	19,718,820	465,617	88,599	2,166,273	19,541,435	463,005	89,838	(14,409)	(177,385)	(2,612)	1,239	-1%	-1%	-0.56%	1.40%
	Total	45,201,037	494,151,800	13,439,295	3,680,338	45,146,319	493,768,921	13,581,166	3,827,073	(54,718)	(382,878)	141,871	146,735	-0.12%	-0.08%	1.06%	3.99%

Extreme Heat



Red = decrease
Green = Increase

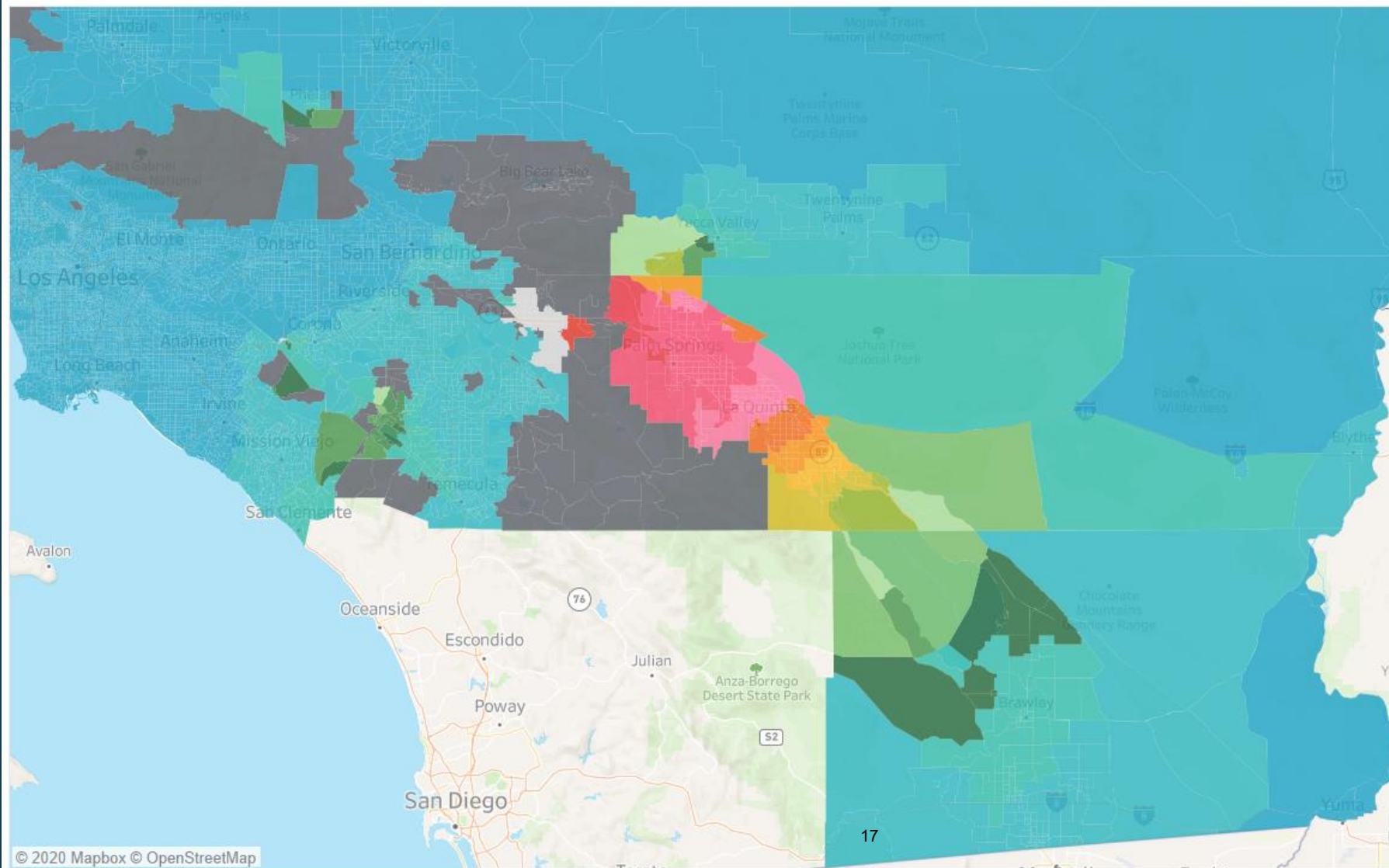
Legend

- Increase in Volume
- Decrease in Volume (EH - Base)

15000 8500 500
0 5 10 15
Miles

Stranded Zones Analysis for Wildfire Scenario

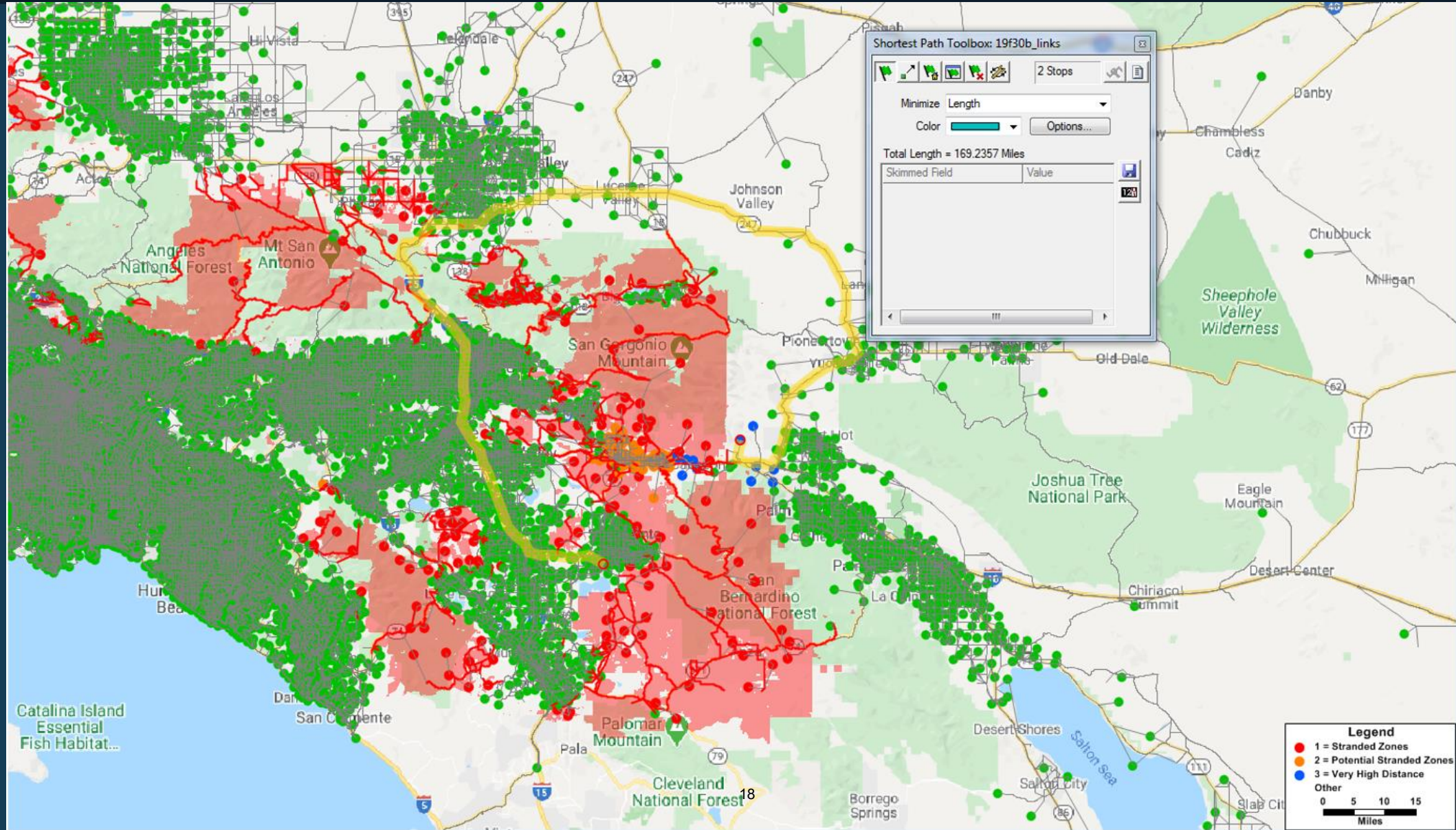
Wildfire Stranded Zones and Severe Detours



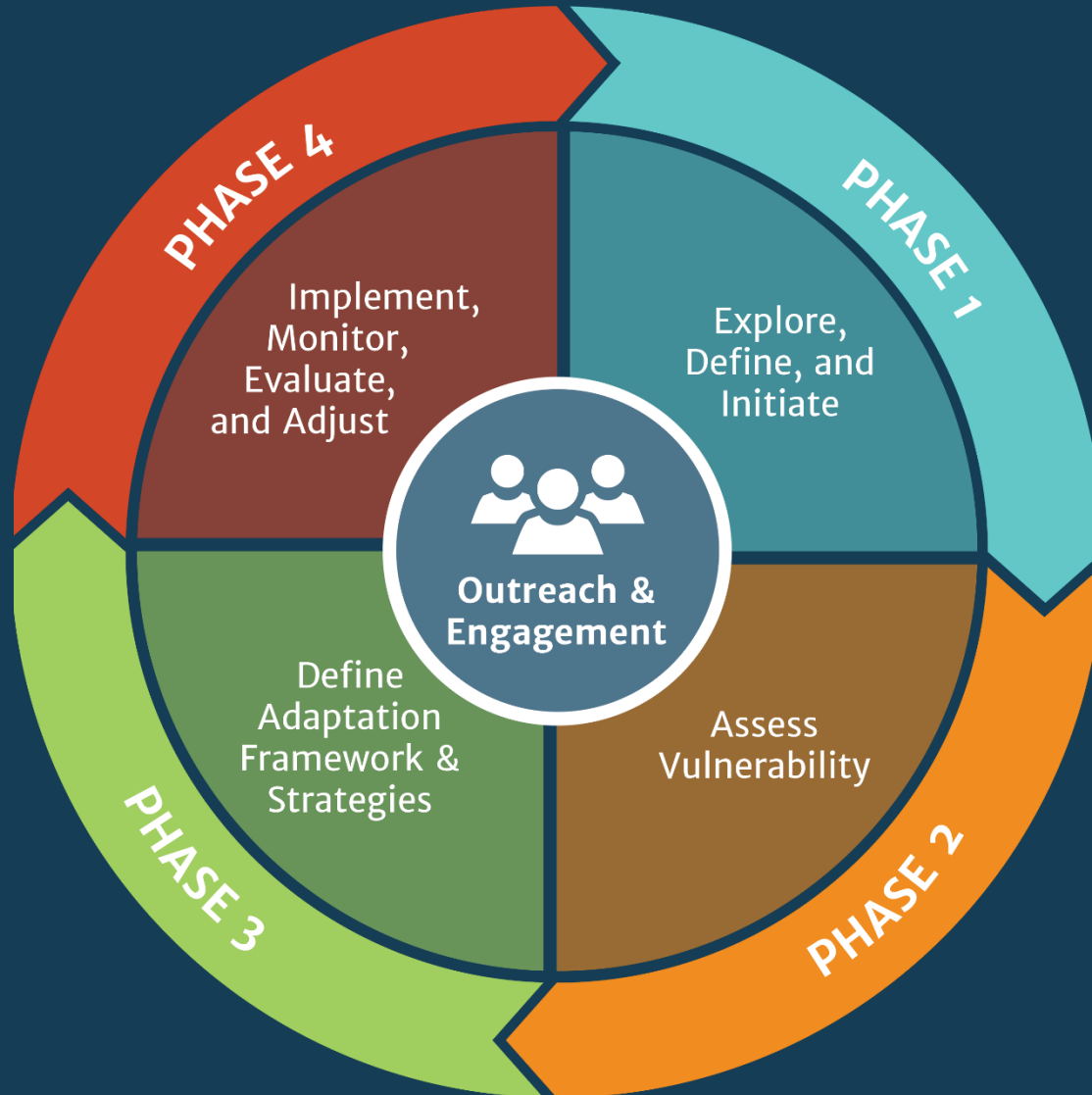
Destinations w/out Severe Detour

- 0.15-0.20
- 0.20-0.25
- 0.25-0.30
- 0.30-0.35
- 0.35-0.40
- 0.40-0.45
- 0.45-0.50
- 0.50-0.55
- 0.55-0.60
- 0.60-0.65
- 0.65-0.70
- 0.70-0.75
- 0.75-0.80
- 0.80-0.85
- 0.85-0.90
- 0.90-0.95
- 0.95-1.00
- Partially Stranded - 50% Evacu..
- Stranded - 100% Evacuation

Severe Detour Analysis for Wildfire Scenario



Tools for Adaptation Planning



Public Engagement Tools (all phases)

- Templates
- Communication Strategies

Phase 1 Tools:

- Status of Vulnerability Assessments
- Decision Tree

Phase 2 Tools:

- Interactive Exposure Map

Phase 3 Tools:

- Adaptation strategies worksheet

Phase 4 Tools:

- Status of General Plans
- Model policies
- Project checklist
- Metrics to track progress
- Adaptation project tracking

What is the Climate Talks Box?

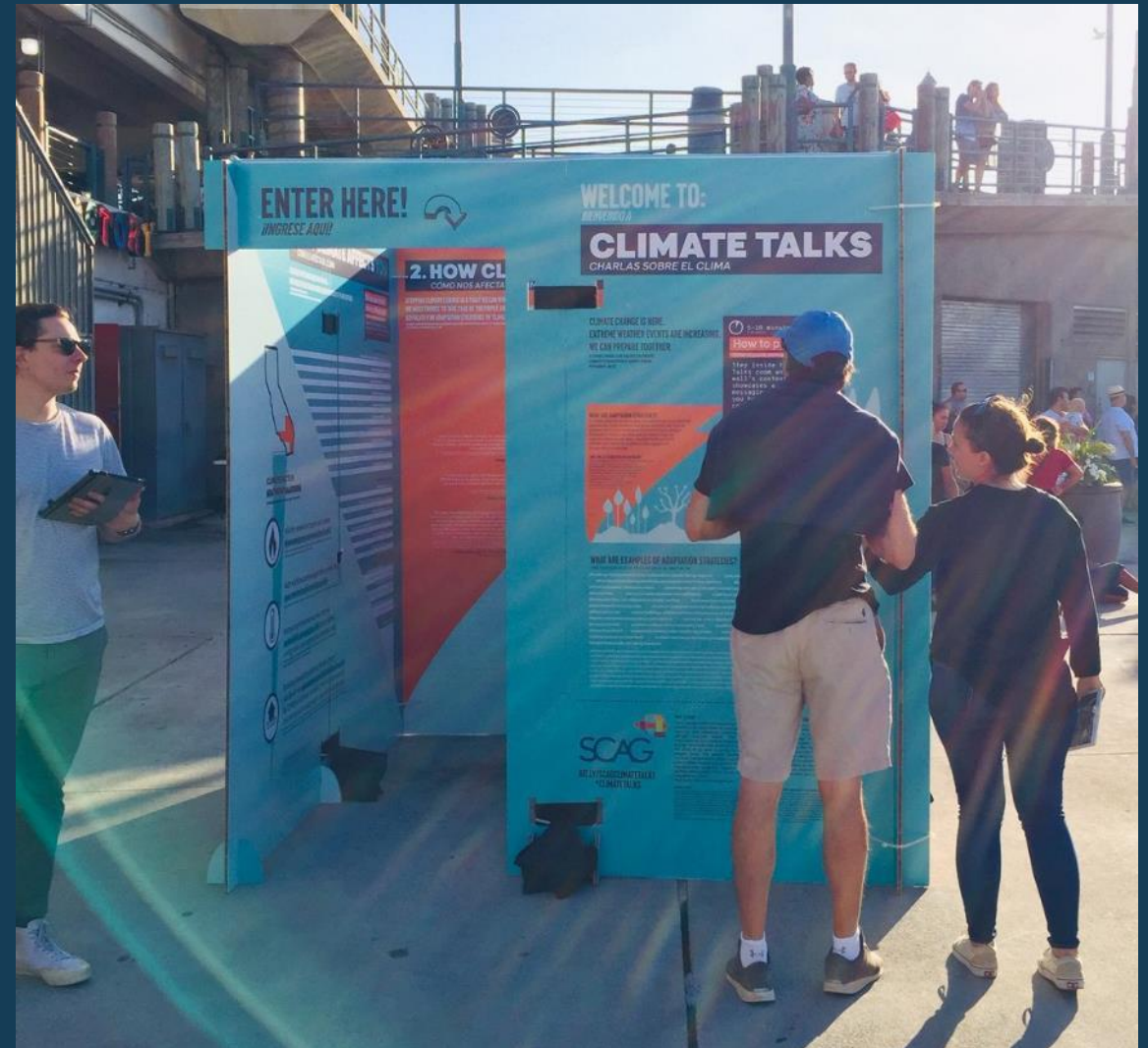
An immersive pop-up experience, crafted with sustainable materials, educating the public about climate change and climate adaptation strategies.

Goal

Test four different messaging strategies about climate change to understand what resonates with people who live in the SCAG region.

Messaging Strategies

1. How climate change causes personal, monetary & health-related harm
2. How trusted leaders are speaking about climate change
3. How climate change is affecting California's natural resources
4. How climate change will affect the region surrounding the pop-up





Redondo Beach Pier Summer
Concert Series, 08/24



Taste of Baldwin Park, 08/29



Climate Resolve Keep LA Cool Day @
Hansen Dam, 09/07



Open Arts & Music Festival, 09/15



Urban Hive Market Long Beach, 09/28

WHAT IS INCLUDED IN THE WORKSHOP TEMPLATE

This workshop template includes three customizable components:

- 1 A presentation slide deck tailored to SCAG jurisdictions who would like to engage constituents in a conversation about climate adaptation and/or mitigation.
- 2 Materials for an interactive activity, in both group and individual formats.
- 3 Corresponding meeting announcements and invites that you can change for your event

All template components provide you with a flexible base. Add to and change them as you see fit.

HOW TO USE THIS TEMPLATE

- 1 Read through this Guide to help orient yourself to the materials included, messaging strategies, and best practices as you craft your communications approach.
- 2 Open up the presentation slide deck in either InDesign or PowerPoint and start to move things around, add your content, and customize the presentation as you see fit.
- 3 Modify the template invitations/notices and send them to your constituents to announce your upcoming workshop.
- 4 Print out the final materials or project them digitally at your workshop to start the conversation!

Communication Strategies

1) Make it personal

Use a personal "risk-based" messaging strategy that identifies the monetary costs and health impacts of climate change for your constituency.

- This strategy ranked as the most effective during SCAG's community outreach.
- Use facts that can apply to an individual's or family's life and phrase the risk so that the effects are tangible. A utility bill increasing by hundreds of dollars is an experience that is easy to grasp; it is much more difficult to grasp a change in millions of dollars to a government's budget.
- *As an example, we have included four such facts in the "How the Climate Affects You" section of the slide deck.*

2) Localize and concretize

Use a before and after visualization of a familiar and beloved resource.

- In this strategy, you can direct your audience's feelings of attachment towards a place, into collective support. Use a visual (photographs, videos, renderings) to show the before and after effects of our changing climate. This allows attendees to see the effects for themselves.
- A good subject is nearby nature that has been affected by extreme weather events.
- As an additional note, the literature shows that conservative audiences respond more favorably to changes that are framed as the "past & present," whereas liberal audiences preferred a "present & future" framing.
- *See the examples in the "How the Climate Affects California" section of the slide deck.*

3) Map the risk

Use a chronological map to show the proximity of risk and change over time.

- This strategy uses mapping visualization to help participants understand the future effects of climate change.
- It is important to keep in mind that map-reading is a special skill. Aid participant understanding by ensuring your visualizations are focused on your immediate locality, and that familiar landmarks are called out.
- Connecting the familiar (local places) to the hard-to-grasp (future climate effects) builds a kind of support grounded in personal affection.
- *See the examples in the "How Climate Changes at Home" section of the slide deck.*

4) Bring in a trusted advisor:

Use the words and stature of someone your community already trusts.

- This strategy requires the identification of a leader or authority figure with whom your community has a rapport and finding a values-based message that will resonate with them.
- This can occur as quotes, a video message, or an in-person appearance. The literature says this strategy can work especially well with older, and more conservative constituencies.
- However, appropriate advisor selection can align this strategy with a wide range of ideologies. Notably, this strategy was reported as slightly less impactful than the other strategies explained here.
- *See the examples in the "How the Climate Affects Us" section of the slide deck.*

Tools for Adaptation Planning



Public Engagement Tools (all phases)

- Templates
- Communication Strategies

Phase 1 Tools:

- Status of Vulnerability Assessments
- **Decision Tree**

Phase 2 Tools:

- Interactive Exposure Map

Phase 3 Tools:

- Adaptation strategies worksheet
- Decision tree

Phase 4 Tools:

- Status of General Plans
- Model policies
- Project checklist
- Metrics to track progress
- Adaptation project tracking

Decision Tree Tool



AGENCY INFO				
Select the County you represent	San_Bernardino			
Select City you represent	Needles			
Total	Population	Employment	Households	Housing Units
County	2,258,662	828,692	700,095	2,587,070
City	7,828	3,264	3,151	10,959
Wildfire	Population	Employment	Households	Housing Units
County	494,946	176,782	155,171	573,404
City	1	0	0	1
Sea Level Rise	Population	Employment	Households	Housing Units
County	-	-	-	-
City	-	-	-	-
Flood	Population	Employment	Households	Housing Units
County	68,514	24,007	21,336	78,842
City	708	295	285	991
Extreme Heat	Population	Employment	Households	Housing Units
County	88,885	20,662	33,587	124,116
City	7,828	3,264	3,151	10,959

PROJECT INFO	
Questions	Project
Which hazard category do you want to look for projects in?	Extreme_Heat
If selected "Other", please mention hazard name	
Asset protected in said project	Vulnerable_Populations
If selected "Other", please mention protected asset name you are interested in	
Desired strategy	Improve access to air conditioning and cooling centers by vulnerable populations
If selected "Other", please mention your desired strategem	
Action item interested in	Encourage partnerships between local emergency responders and local health departments to identify and reach vulnerable populations in need of access to cooling centers or personal cooling resources
If selected "Other", please mention your desired action item	

Tools for Adaptation Planning



Public Engagement Tools (all phases)

- Templates
- Communication Strategies

Phase 1 Tools:

- Status of Vulnerability Assessments

- Decision Tree

Phase 2 Tools:

- **Interactive Exposure Map**

Phase 3 Tools:

- Adaptation strategies worksheet

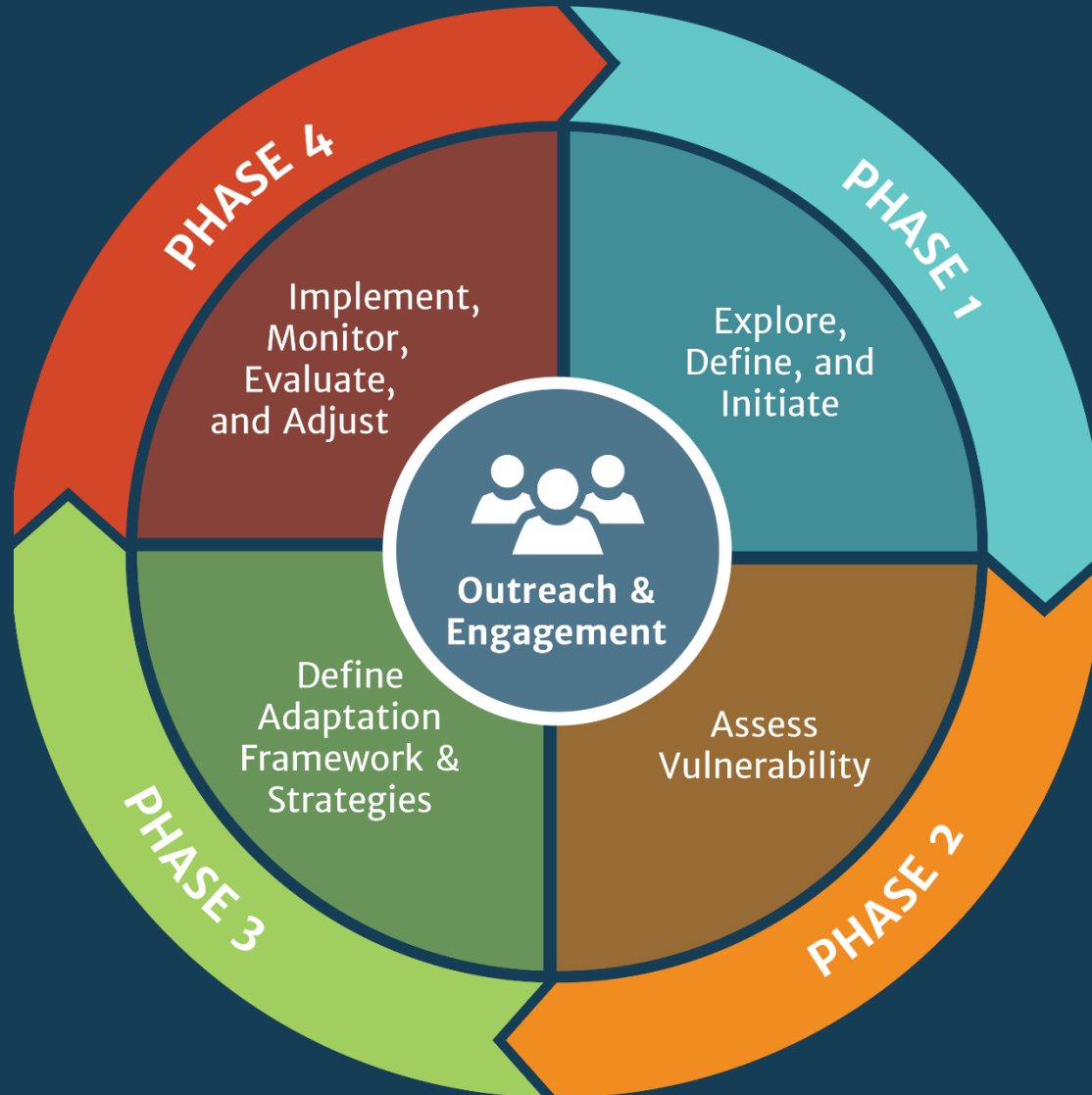
Phase 4 Tools:

- Status of General Plans
- Model policies
- Project checklist
- Metrics to track progress
- Adaptation project tracking

Interactive Mapping Tools

- Under development using ArcGIS Online and StoryMaps tools
- One-stop shop for exploring all risk hazard layers
- Includes demographics (pop, HHs, emp) as dot density layers
 - Able to search and query overlays in your jurisdiction by risk layer
 - Wildfire Risk, Sea Level Rise, Inland Flooding, Extreme Heat Health Events
 - Select by jurisdiction or by spatial area user-determined
 - Summarize vulnerability data to input to other tools

Tools for Adaptation Planning



Public Engagement Tools (all phases)

- Templates
- Communication Strategies

Phase 1 Tools:

- Status of Vulnerability Assessments

- Decision Tree

Phase 2 Tools:

- Interactive Exposure Map

Phase 3 Tools:

- [Adaptation strategies worksheet](#)

Phase 4 Tools:

- Status of General Plans
- Model policies
- Project checklist
- Metrics to track progress
- Adaptation project tracking

Adaptation Actions

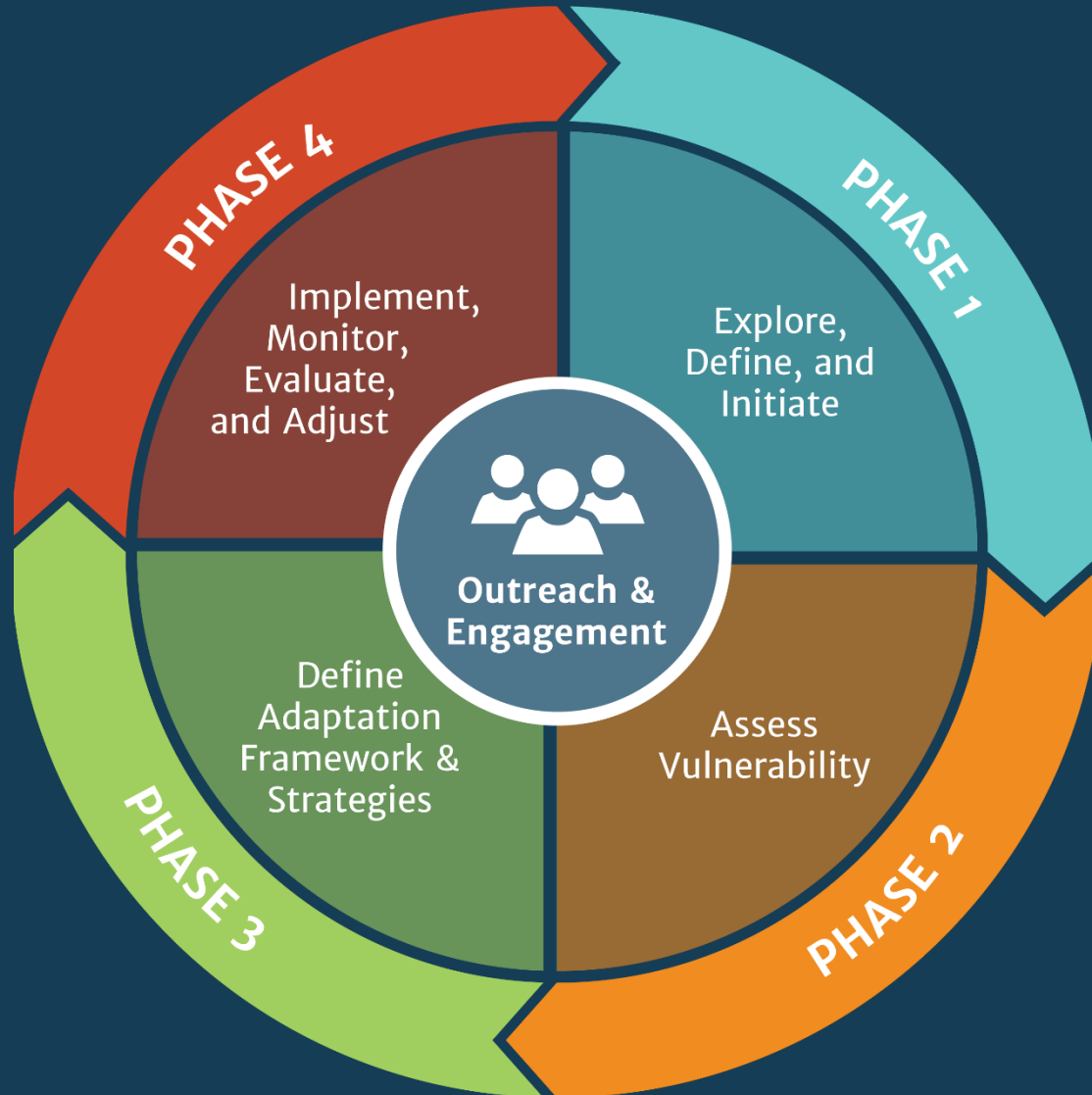
- Excel Spreadsheet
- Over 275 actions
- Filter by climate change hazard type (e.g., extreme heat, air quality)
- Filter by asset type (e.g., vulnerable populations, public health)
- Strategies and actions can be incorporated into Climate Adaptation Plans or as implementation programs for the General Plan

Adaptation Actions



Climate Change Hazard	Asset	Strategy	Action
Wildfire	Buildings and Facilities	Account for climate change impacts when designing and approving future projects and retrofitting existing projects	Require accounting of wildfire risk in all applications for new development in wildfire hazard zones. Ensure that all applications for new development account for increased wildfire risk and provide adequate protection or design accommodations.
Wildfire	Buildings and Facilities	Design buildings and facilities to minimize vulnerability to fire hazards	Create a layered fire defense approach using structure hardening and fuel reduction / change of fuel types to buffer development in relation to managing a neighborhood's expected fire intensity potential.
Wildfire	Buildings and Facilities	Design buildings and facilities to minimize vulnerability to fire hazards	Establish neighborhood and building design standards that minimize fire and landslide hazards in high fire hazard severity zones and high landslide susceptibility areas.
Wildfire	Buildings and Facilities	Design buildings and facilities to minimize vulnerability to fire hazards	Increase requirements for development/construction codes and public education programs to gain more hardening of structures.
Wildfire	Buildings and Facilities	Design buildings and facilities to minimize vulnerability to fire hazards	Leverage regulatory authority to improve compliance with defensible space laws by increasing the number and effectiveness of defensible space inspections and applying building standards for fire safety uniformly.
Wildfire	Buildings and Facilities	Design buildings and facilities to minimize vulnerability to fire hazards	Develop a fire risk assessment for all new development within fire hazard severity zones or the wildland-urban interface.
Wildfire	Multiple Assets	Discourage development in areas vulnerable to climate change impacts	Reduce building in the urban/wildland interface through policies such as density bonuses, transfer of development rights, and zoning and building codes that inhibit further fragmentation and intrusion of development in fire-prone wildlands
Wildfire	Multiple Assets	Establish local early warning systems	Establish an early warning system for wildfire events
Wildfire	Buildings and Facilities	Expand public outreach and education to policymakers, businesses, and the general public	owners by the start of the annual fire season. The outreach program could include information mailers, door-to-door visits, hosting an annual public education course, development of a defensible space mobile phone app, etc.
Wildfire	Buildings and Facilities	Expand public outreach and education to policymakers, businesses, and the general public	Develop and formalize a program for providing defensible space assistance (labor or financial) for community members without the capacity and means to perform defensible space work (e.g., seniors, low-income populations).

Tools for Adaptation Planning



Public Engagement Tools (all phases)

- Templates
- Communication Strategies

Phase 1 Tools:

- Status of Vulnerability Assessments

- Decision Tree

Phase 2 Tools:

- Interactive Exposure Map

Phase 3 Tools:

- Adaptation strategies worksheet

Phase 4 Tools:

- Status of General Plans
- **Model policies**
- Project checklist
- Metrics to track progress
- Adaptation project tracking

Model Policies for Local Coastal Programs and General Plans



Model policies organized by general plan element and climate hazard type

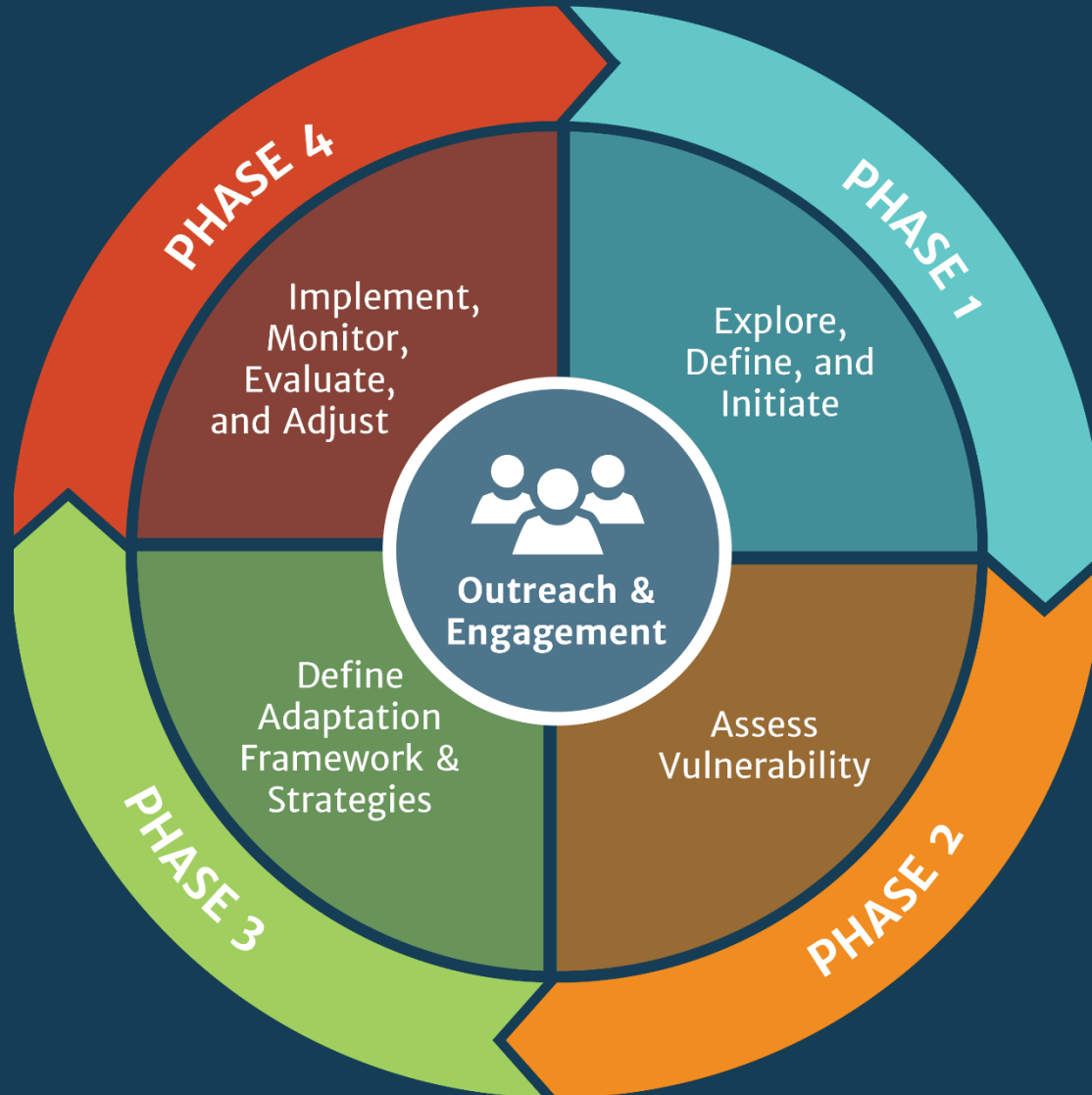
- Elements:
 - Environmental Justice
 - Circulation
 - Land Use
 - Safety
- Hazards:
 - Multiple hazards
 - Extreme heat
 - Air quality and human health
 - And other climate-related hazards

LAND USE ELEMENT

Extreme Heat

- **Shade for Livestock.** Amend local zoning ordinances to allow ancillary shade structures for vulnerable livestock populations. (Agriculture)
- **Green or White Roofs.** Require green or white roofs, depending upon sub-regional locations and water requirements, to reduce solar gain and heat island effects. (Buildings and Facilities)
- **Landscaping to Reduce Heat.** Develop landscaping standards and guidelines to encourage or require native-cultivar drought tolerant landscaping with enough coverage to provide shade and reduce heat absorption. (Public Health, Socioeconomics, and Equity)
- **Building Design Features.** Modify the community's zoning ordinance and/or design guidelines to allow and encourage awnings, canopies, arcades and/or colonnades that can encroach into the public sidewalk area to create shade for pedestrians. (Transportation)

Tools for Adaptation Planning



Public Engagement Tools (all phases)

- Templates
- Communication Strategies

Phase 1 Tools:

- Status of Vulnerability Assessments

- Decision Tree

Phase 2 Tools:

- Interactive Exposure Map

Phase 3 Tools:







- Adaptation strategies worksheet

Phase 4 Tools:

- Status of General Plans
- Model policies
- **Project checklist**
- Metrics to track progress
- Adaptation project tracking

Project Checklists

**TABLE 1
PROJECT SCREENING THRESHOLDS FOR CLIMATE HAZARDS (FOR PROJECT PROPONENT TO COMPLETE)**

Climate Hazard	Screening Threshold Questions <i>(If the answer to any of the following questions is "Yes", then the checklist for that hazard must be completed)</i>	Links or Sources of Information
 Drought	<ul style="list-style-type: none"> Would project consume water resources in its construction or operation and if so, are the water sources supplying the project at risk from drought? Yes <input type="checkbox"/> No <input type="checkbox"/> 	Urban Water Management Plan applicable to the project's location
 Extreme Heat	<ul style="list-style-type: none"> Is the area where your project is located expected to experience more than 30 heat health days per year over the project lifetime? Yes <input type="checkbox"/> No <input type="checkbox"/> 	Maps based on California Heat Assessment Tool (CHAT): https://www.cal-heat.org/
 Inland Flooding	<ul style="list-style-type: none"> Is the project located in the 100-year or larger FEMA floodplain, otherwise known as the 1% annual chance flood? Yes <input type="checkbox"/> No <input type="checkbox"/> Using Cal-Adapt, will the project watershed be subject to an increase of extreme precipitation events? Yes <input type="checkbox"/> No <input type="checkbox"/> 	FEMA Flood Maps: https://msc.fema.gov/portal/home
 Landslides	<ul style="list-style-type: none"> Is the project located in area of moderate or high susceptibility to landslide hazards? Yes <input type="checkbox"/> No <input type="checkbox"/> 	USGS landslide susceptibility map: https://maps.conservation.ca.gov/cgs/ls/
 Sea Level Rise/ Coastal Flooding	<ul style="list-style-type: none"> Is the project in a SLR vulnerability zone, or will any infrastructure or resources that the project relies upon be affected by SLR (e.g., beaches, groundwater)? Yes <input type="checkbox"/> No <input type="checkbox"/> 	Use detailed local SLR maps, if available. Alternatively, use Our Coast Our Future tool: http://data.pointblue.org/apps/ocof/cms/index.php?page=flood-map
 Wildfire	<ul style="list-style-type: none"> Is the project located in a high or very high fire hazard zone? Yes <input type="checkbox"/> No <input type="checkbox"/> 	CalFIRE Maps - https://osfm.fire.ca.gov/divisions/wildfire-planning-engineering/wildland-hazards-building-codes/fire-hazard-severity-zones-maps/

Template for incorporating climate change adaptation elements into local project approval process:

- Residential and commercial development
- Infrastructure projects

Two-step process:

1. Suggested screening thresholds for 6 hazards
2. Detailed checklist for each hazard

Extreme Heat Checklist

Over the coming decades the SCAG region can expect longer and hotter heat waves. Average maximum temperatures are projected to increase around 4-5 degrees F by the mid-century, and 5-8 degrees F by the late-century. Extreme temperatures are also expected to increase in duration and intensity.


Exposure

1. **Historical exposure:** Has the site historically experienced extreme heat events? (Provide supporting evidence; If yes, please describe past events or conditions: e.g., long heat spells, hot nights, etc.)

Yes No Basis for conclusion:

2. **Future Conditions over Project Lifetime:**

- Extreme heat events are expected to increase in duration and/or intensity.
 Extreme heat events are not expected to increase in duration and/or intensity.
 Extreme heat events are expected to remain about the same.
 Unknown.

3. **Identify data source(s) or map(s)/modeling used for assessing past and future exposure of the asset** 
(check all that apply):

- California Heat Assessment Tool (CHAT) found at <https://www.cal-heat.org/>
 Cal-Adapt
 Site Specific Modeling (please provide date and source of information):

Sensitivity

1. **Human Health:** Using the CHAT (www.cal-heat.org), determine the Heat Vulnerability Index (HVI) for the census tract where the project is located: _____.

Areas with HVI values over 50 are considered highly vulnerable to heat-related health impacts.

2. **Physical Asset:** Assess sensitivity to the climate hazard based on the following criteria:

- Low Sensitivity:** Climate hazard would have little or no impact on the asset's physical components or how the project functions.
- Moderate Sensitivity:** Climate hazard would have an impact on the project's physical components and/or its functionality, but the project would recover quickly once hazard subsides. The project would retain some ability to function while exposed.
- High Sensitivity:** Climate hazard would have a significant impact on the project/asset(s) physical components and/or its functionality, and the project would not recover quickly once the hazard subsides. The project would lose major functionality while exposed.

- For each hazard of potential concern:
- a. Assess project's vulnerability based on exposure and sensitivity
 - b. Assess potential consequences based on:
 - I. Estimated level of asset damage
 - II. Level of disruption of asset service or function
 - III. Cost to replace and/or repair and cost of losing the service/function of the asset

Project Checklists

Adaptation Assessment

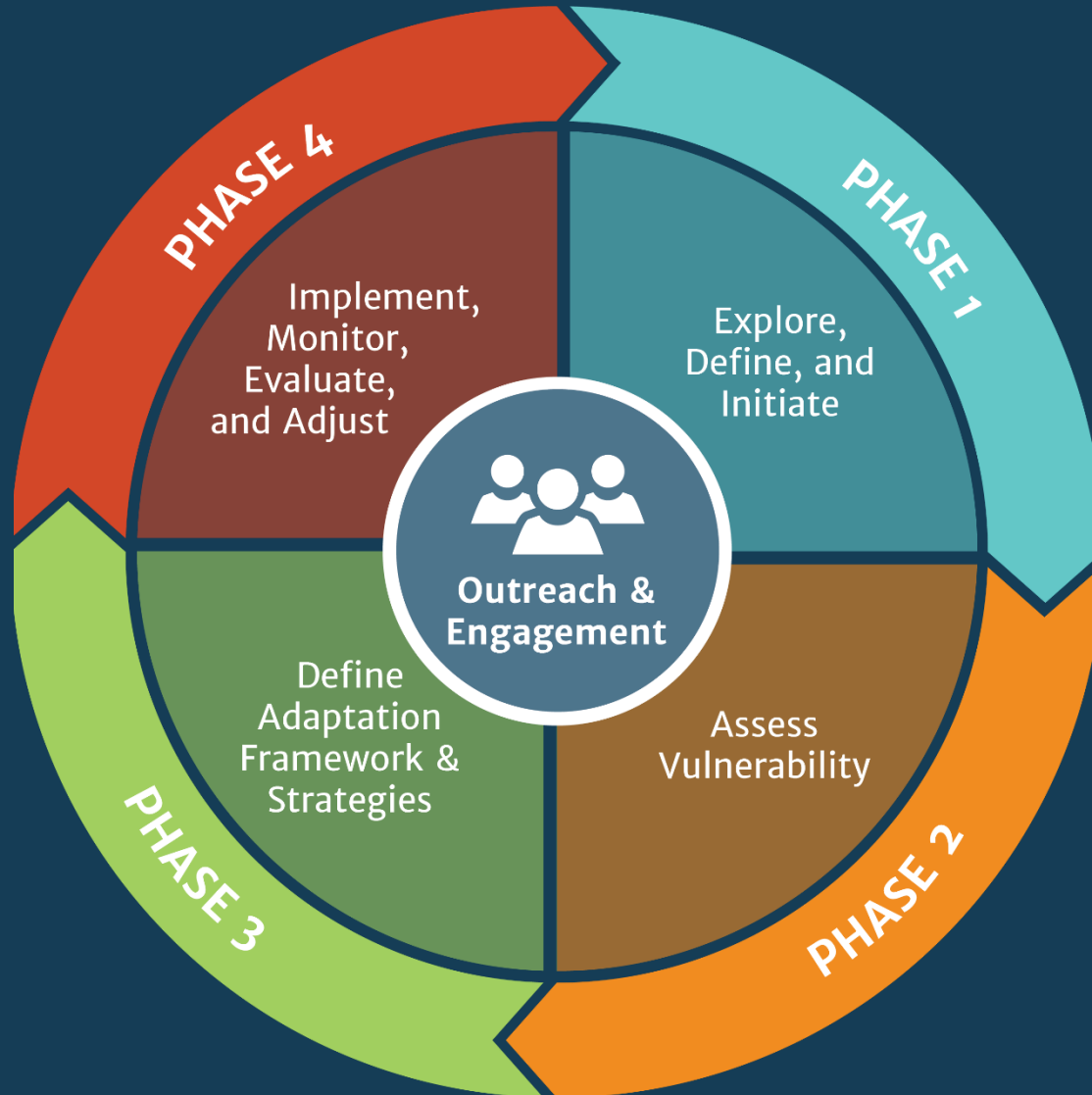
Project Adaptation Measures:

From the following list of adaptation measures, identify those that the project will incorporate to increase adaptive capacity to extreme heat. For all “no” answers provide additional explanatory information, including whether the measure is not applicable to the project.

Robustness	<p>1. Would project expand and maintain the urban tree canopy? (e.g., by increasing tree cover for large parking lots) <input type="checkbox"/> Yes <input type="checkbox"/> No <input type="checkbox"/></p> <p>2. Would the project expand the use of cool roofs and reflective building materials? <input type="checkbox"/> Yes <input type="checkbox"/> No <input type="checkbox"/></p> <p>3. Would the project use alternative vegetative solutions to alleviate urban heat island: for example, green walls and green roofs where trees are not possible? <input type="checkbox"/> Yes <input type="checkbox"/> No <input type="checkbox"/></p> <p>4. Would the project expand the use of cool, porous, high-reflectivity pavement or sustainable materials in pavements? <input type="checkbox"/> Yes <input type="checkbox"/> No <input type="checkbox"/></p>
Resilience	<p>5. Would the project use alternatives to grid-powered air conditioners for cooling, such as propane air conditioners, fans and cold water systems? <input type="checkbox"/> Yes <input type="checkbox"/> No <input type="checkbox"/></p>
Adaptability	<p>6. Would the project limit or remove impervious surfaces to help combat urban heat island effects? <input type="checkbox"/> Yes <input type="checkbox"/> No <input type="checkbox"/></p> <p>7. Does the project expand access to cooling centers for vulnerable populations to use during heat health events? <input type="checkbox"/> Yes <input type="checkbox"/> No <input type="checkbox"/></p>
Redundancy	<p>8. Would the project have at least 2 routes for emergency vehicle access to allow for emergency services/first responders to access people at project site in the event of an emergency? <input type="checkbox"/> Yes <input type="checkbox"/> No <input type="checkbox"/></p>

- c. Assess project’s adaptive capacity, based on the adaptation measures incorporated into its design
- i. Suggested measures: customize to local needs
 - ii. Utilize the Strategy Matrix

Tools for Adaptation Planning



Public Engagement Tools (all phases)

- Templates
- Communication Strategies

Phase 1 Tools:

- Status of Vulnerability Assessments

- Decision Tree

Phase 2 Tools:

- Interactive Exposure Map

Phase 3 Tools:

- Adaptation strategies worksheet

Phase 4 Tools:

- Status of General Plans
- Model policies
- Project checklist
- Metrics to track progress
- **Adaptation project tracking**

Project Tracking Tool



AGENCY INFO						
Select the County you represent	San_Bernardino			Population	Employment	Households
Do you represent a County Agency, a City Agency or Other Agency?	City		County	2,258,662	828,692	700,095
If selected Other Agency, please select Agency Name from the list			City	7,828	3,264	3,151
If selected "Other", please mention the name of the agency you represent						
Select City you represent	Needles					
PROJECT INFO						
Metrics	Project 1	Project 2	Project 3	Project 4	Project 5	Project 6
Climate Change Hazard combating through existing, planned or proposed projects (can mention as many as you know)	Extreme_Heat	Inland_Flood	Wildfire	Extreme_Heat	Severe_Storms Or_Wind	
<i>Affected Population</i>	7,828	708	1	7,828	Unknown	Unknown
<i>Affected Employment</i>	3,264	295	0	3,264	Unknown	Unknown
<i>Affected Households</i>	3,151	285	0	3,151	Unknown	Unknown
If selected "Other", please mention hazard name						
Asset protected in said project	Public Transit	Multiple Assets	Public Health	Vulnerable Pop	Buildings and Facilities	
If selected "Other", please mention protected asset name						
Scale of project (SED protected) by this effort (in % ??)	0.05	0.35	0.9	0.2		
<i>Protected Population</i>	391	248	1	1,566	Unknown	Unknown
<i>Protected Employment</i>	163	103	0	653	Unknown	Unknown
<i>Protected Households</i>	158	100	0	630	Unknown	Unknown
Additional Description						
Stage of the project	Construction	Proposed	Planning	Engineering/De	No Action	
Timeline						
Cost						
Funding	Partially funded	Unfunded	Partially funded	Fully funded	Unfunded	
Contact Info for PM						

Contact the project team

SCAG

Kimberly Clark
clark@scag.ca.gov

Adaptation Team
adaptation@scag.ca.gov

Cambridge Systematics

David Von Stroh
dvonstroh@camsys.com

ESA

Jeff Caton
JCaton@esassoc.com

Here LA

Amber Hawkes
ahawkes@here.la

www.scag.ca.gov



FY2020/2021 Project List

Updated on 9/30/2020

State and Federal funding Obligations: Beginning October 1, 2020, agencies are allowed to move forward with request for authorization (RFA) for Congestion Mitigation Air Quality (CMAQ), Surface Transportation Block Grant Program (STBG) and Active Transportation Program (ATP) programmed in FY 2020/2021								
Agency	Project ID	Project Name	Funding Type	Phase	Federal Amount in FY 2020/21	Local Match	Total Phase Cost	Status
Brawley	IMP190701	Pedestrian and street improvements (paving of dirt road) on Legion Street between State Route 86 and Western Avenue	CMAQ	CON	\$797,000	\$103,000	\$900,000	E-76
Brawley	IMP190702	Construct street improvements (paving of dirt road) along Western Avenue from Legion Street to Wildcat Drive	CMAQ	Engineering/Plans, Specifications and Estimates (PS&E)				E-76
Brawley	IMP190708	Street improvements (repavement) along Legion Street from East of Kelley Ave. to West St. deflection point near West City limits	STBG	CON				E-76
Brawley	IMP190709	Street improvement (repavement) along K Street from Highway 86 to 8th St.	STBG	Engineering/Plans, Specifications and Estimates (PS&E)				E-76
Calexico	IMP191001	Weakley Street between Scaroni Blvd. and Portico Blvd. (unpaved street)	CMAQ	CON	\$291,000	\$40,000	\$331,000	
Calipatria	IMP190703	Date Street between HWY 111/Sorenson Ave. and Railroad Ave. pedestrian improvements	CMAQ & STBG	CON				E-76 Pending
El Centro	IMP190704	Traffic Signal Synchronization Dogwood Avenue and 8th Street	CMAQ	CON	\$367,000	\$48,000	\$415,000	E-76/Council approval
El Centro	IMP190710	Imperial Avenue Extension Phase II	STBG	CON	\$700,000	\$91,000	\$791,000	
Holtville	IMP190705	Cedar Avenue Sidewalk Improvements	CMAQ	CON	\$193,000	\$25,000	\$218,000	Ready to submit RFA on OCT 1st
Holtville	IMP190706	9th Street Sidewalk Improvements from Beale Avenue to Oak Avenue	CMAQ	CON				Turned in RFA CON in June 2020
Holtville	IMP190711	Orchard Road from Alamo River Bridge to 4th Street	STBG	CON				Turned in RFA CON in June 2020
Imperial	IMP190707	Class I & Class II Bike Facility along the North side of Aten Blvd. from Dogwood Road to Puerto Vallarta Avenue.	CMAQ	CON				E-76
Imperial	IMP190301	2nd Street Rehabilitation and Reconstruction from Old SR-86 to P Street	STBG	CON	\$1,841,000	\$1,181	\$3,022	Design Phase
County	IMP190713	Improvements on Main Street Such as widening of existing road t add bike lane, sidewalks, shoulder, curb and gutter from Highway 111 to Clark Road	CMAQ	Engineering/Plans, Specifications and Estimates (PS&E)	\$107,000	\$14,000	\$121,000	
County	IMP190714	Clark Road Improvements from Wahl Road to 0.5 miles north of SR-98	STBG	CON				
						Regional Total FY2020/21	\$2,779,022	



SOUTHERN CALIFORNIA ASSOCIATION OF GOVERNMENTS
900 Wilshire Blvd., Ste. 1700, Los Angeles, CA 90017
T: (213) 236-1800 www.scag.ca.gov

Memorandum

Date: October 14th, 2020
To: ICTC Management Committee Meeting
From: David Salgado, Regional Affairs Officer (RAO)
Re: **Southern California Association of Government's (SCAG) Report**

The following is a summary of the SCAG Executive Director's Report and/or Federal and State Legislature Staff Report for the Imperial County Transportation Commission's regular meeting for the month of October 2020.

1. The 11th Annual Southern California Economic Summit: On Tuesday, Dec. 1, SCAG will host the Southern California Economic Summit virtually for the first time in its 11-year history. This annual conversation about the state of the region's economy comes at a time of unprecedented crisis. In the wake of the COVID-19 pandemic, Southern California's cities, families and cornerstone industries have all been seismically impacted and face enormous challenges on the road to recovery. Hear from leading voices in business, industry, planning and academia as they define strategies for building back a strong, inclusive Southern California economy.

We hope you will join us, along with Southern California's civic and business leaders, for this vital conversation on the region's economic future. General admission tickets are \$50. The ticket fee may be waived for elected officials and city managers of SCAG's member jurisdictions. There will be no general admission refunds after Nov. 9. Online registration closes Nov. 30. For more information, please contact Linda Jones at (213) 236-1912 or by email at jonesl@scag.ca.gov.

2. 2020 SCAG Sustainable Communities Program (SCP) Grant Program: SCAG has approved the 2020 SCP grant guidelines. The FY 2020/2021 program will fund projects in the following areas that support and implement the policies and initiatives of the 2020 Regional Transportation Plan/Sustainable Communities Strategy (RTP/SCS), Connect SoCal: Active Transportation & Safety; Housing and Sustainability; Smart Cities, Mobility Innovation & Transportation Demand Management; and Green Region. The first Call prioritizes Active Transportation & Safety projects, and the second Call prioritizes efforts to increase housing production. More details and guidelines for subsequent supplemental Calls will be released as they become available.

Staff will promptly issue a Call for Applications for the Active Transportation & Safety Supplement, subject to authorization of the SCP guidelines by the Regional Council on September 3, 2020. Active Transportation & Safety applications will be due to SCAG by 5 p.m. on November 13, 2020, and staff will conduct a workshop at least one month before this due date in order to answer questions and foster SCP program understanding. Approval of application rankings will be sought from the Regional Council in May 2021, and individual project initiation schedules will be developed promptly thereafter.

Sustainable Communities Program – Active Transportation & Safety Application Webinar: Thursday, Oct. 21 10 a.m. – Noon SCAG is now accepting applications for the 2020-2021 Sustainable Communities Program (SCP) – Active Transportation & Safety. Learn more about the program guidelines, application process and examples and information for each project type at the next Application Webinar on Wednesday, Oct. 21, from 10 a.m. - noon. This webinar will also provide a forum to answer any questions. Register here to attend.

- 3. Connect SOCAL Approval:** The Regional Council of Southern California Association of Governments (SCAG) on Thursday September 3, 2020 formally adopted a 25-year plan to meet the mobility needs of one of the most robust population and economic centers in the United States.

The plan, Connect SoCal, had previously been approved for conformity purposes by the Federal Highway Administration (FHWA). With Thursday’s action, the 2020-2045 Regional Transportation Plan/Sustainable Communities Strategy provides a roadmap for sensible ways to expand transportation options, improve air quality and bolster Southern California’s long-term economic viability. The press release is attached to the back up for this agenda for your reference.

- 4. 2020 Local Early Action Planning Grant (LEAP) Program: The Local Early Action Planning (LEAP) grant program’s deadline has been extended to January 31, 2021! You still have time to apply! Jurisdictions who did not apply:** For cities and counties that were not able to meet the July 1, 2020 deadline, you still have more time! You now have until January 31, 2021, to apply for LEAP funding. Remember, LEAP funding is non-competitive, flexible funding to help cities and counties plan for housing in their communities. **Jurisdictions who did apply:** If you have already applied for the LEAP program, you can still make modifications and adjustments to your application. HCD can make adjustments to the application during the review process or even after awards. HCD has dedicated an individual to assist cities in Imperial County.

Sample eligible projects include but are not limited to:

- Rezoning and encouraging development through updating ordinances and plans
- Establishing Prohousing policies

- CEQA
- Updating housing elements
- Updating ordinances to comply with state housing laws (e.g. ADU ordinances)
- Developing specific plans and other plans focused on housing
- Implementing processes that streamline the application process for housing developments
- and much more!

For technical assistance such as help with brainstorming eligible activities, reviewing draft applications, adjusting existing applications, and answering questions, please contact me or earlyactionplanning@hcd.ca.gov.

- 5. SCAG Aerial Imagery Project 2020 Update:** After numerous meetings to discuss the potential for SCAG to facilitate a new Aerial Imagery flyover project, the County of Imperial has agreed to facilitate a procurement process. This will allow for more funds to be applied to the project to support the procurement. SCAG has set aside \$250,000 for the project and will increase the support by \$50,000 for a total of \$300,000. It's anticipated that once the procurement is completed there will be an opportunity to develop a cost share model moving forward. The County of Imperial has worked to identify some areas of savings (resolutions and coverage areas) which should help to reduce participants share of the overall project cost.

UPCOMING WORKSHOPS AND WEBINARS

Go Human Community Listening Session: Monday, Oct. 19 10:30 a.m. – Noon SCAG and its *Go Human* team are hosting a virtual Community Listening Session as an opportunity for the public to offer input on the programs funded by the 2021 grant from the California Office of Traffic Safety. This listening session shall review multiple safety and engagement strategies, including *Go Human*'s Community Safety Ambassador Cohort Program; Resilient Streets Strategies; Safety Mini-Grants for community-based organizations; and Sub-Regional Safety Peer Exchange Program. [Register here](#) to attend.

Safe, Resilient & Locally Grown: Exploring Pandemic-Era Data Trends and Policy Implications
Thursday, Nov. 12 10 – 11:30 a.m. SCAG and its *Go Human* team, alongside AAA of Southern California, are hosting a virtual safety series on improving traffic safety conditions while reducing COVID-19 transmission. This session will present important safety trends and data collected during the pandemic. Panel experts will discuss what recent data can tell us about driver behavior relative to environmental factors such as congestion, enforcement levels, temporary road treatments and more. [Register here](#) to attend.



SOUTHERN CALIFORNIA ASSOCIATION OF GOVERNMENTS
900 Wilshire Blvd., Ste. 1700, Los Angeles, CA 90017
T: (213) 236-1800 www.scag.ca.gov

Safe, Resilient & Locally Grown: Building Partnerships & Generating Support Thursday, Nov. 19, 10 – 11:30 a.m. This is the second session in the virtual [safety series](#) hosted by SCAG and its *Go Human* team, in partnership with AAA of Southern California. This session will illustrate how collaborations between key stakeholders can help communities make inroads in reducing serious traffic safety collisions. This session will lead a discussion on creative, strategic safety efforts that community-led efforts rooted in resiliency. Panelists will share lessons learned from successful programs and projects that brought together community groups, policymakers, local officials and local businesses in the pandemic environment. [Register here](#) to attend.



**California Department of Transportation (Caltrans) District 11
DISTRICT LOCAL ASSISTANCE ENGINEER (DLAE) UPDATE
Imperial County Transportation Commission (ICTC)
Technical Advisory Committee (TAC)
October 22, 2020 Meeting**

Contact: Ben Guerrero, Local Area Engineer: Benjamin.Guerrero@dot.ca.gov or 619-985-1492 (cell)

Inactive Projects

Projects must be billed within the specified and agreed-upon timeframe to avoid de-obligation of funds.

As of **October 9, 2020**, the INACTIVE and Future Inactive list was updated. Action is required by the Imperial County Transportation Commission, as well as these cities: Brawley and El Centro.

November 20, 2020 is the deadline to submit Inactive invoices. District 11 must receive accurate and complete invoices to prevent de-obligation of federal funds! Verify on the “Inactive” link shown below for Inactive Project dates.

Note: An invoice is not cleared from either “Inactive” or “Future Inactive” lists until paid by the State Controller’s Office. Provided local agencies adhere to the format described in Chapter 5 of the Local Assistance Procedures Manual (LAPM), invoices typically are paid by check within 60 days of receipt (or 50 days if paid through Electronic Funds Transfer).

Complete list of Inactive Projects – <https://dot.ca.gov/programs/local-assistance/projects/inactive-projects>

November 2, 2020 – Highway Safety Improvement Program (HSIP) Cycle 10 Call for Projects (update)

Caltrans Division of Local Assistance (DLA) announced the local Highway Safety Improvement Program (HSIP) Cycle 10 Call for Projects on May 5, 2020. **The latest application deadline is November 2, 2020.**

For additional information on the HSIP Cycle 10, please see the following link –

<https://dot.ca.gov/-/media/dot-media/programs/local-assistance/documents/hsip/2020/hsipcycle10announcement.pdf>

Resources and presentations from the recent Webinar are now posted through the following link –

<http://www.localassistanceblog.com/2020/06/13/new-resources-hsip-cycle-10-webinar>

January 29, 2021 – Federal Fiscal Year (FFY) 20/21 Requests for Authorization Obligations Due!

Funding Requests for Authorization (RFA) during this federal fiscal year are due by January 29, 2021.

Note the **Obligation Authority (OA) funds for redistribution are dwindling faster than in prior years.** Also, make sure that funds are programmed appropriately.

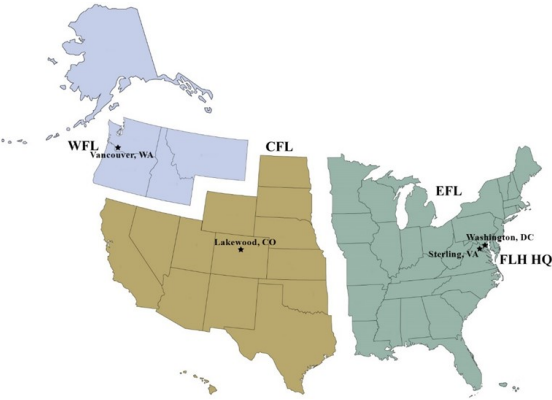
November 2020 – New Federal Lands Access Program (FLAP) Call for Projects (due in April 2021)

An announcement calling for new Federal Lands Access Program (FLAP) projects is anticipated in November 2020. The deadline for “FLAP applications” is expected to be in April 2021. The outreach plan is to schedule webinars that assist tribal and local agencies, as well as Caltrans, with this process.

FLAP funds projects providing access to, are adjacent to, or are located within Federal Lands on facilities maintained or owned by a state, county, local agency or tribal government. Projects accessing high-use Federal recreation sites or Federal economic generators will receive priority. FLAP intends to supplement State, local and tribal resources for public roads, trails, transit systems, and other transportation facilities.

The following brochure is also accessible with this link –

dot.ca.gov/-/media/dot-media/programs/local-assistance/documents/flap/flap-2021callforprojbrochure.pdf



Our Mission

Improving transportation to and within Federal and Tribal Lands by providing technical services to the highway transportation community, as well as building accessible and scenic roads that ensure the many national treasures, within our Federal Lands, can be enjoyed by all.

Have any questions about FLAP?

Call or email Central Federal Lands Highway Division's (CFLHD) FLAP Program Points of Contact below:

James Herlyck, Access Program Manager
 720-963-3698, James.Herlyck@dot.gov

Laurie Miskimins, FLAP Planner
 720-963-3455, Laurie.Miskimins@dot.gov

California's PDC Members

The Programming Decisions Committee (PDC) determines FLAP programming decisions in each state. PDC members' contact information can be found [here](#).

Federal Lands Access Program

Improving access to and within federal lands

California

The **Federal Lands Access Program (FLAP)** was established under the Moving Ahead for Progress in the 21st Century Act (MAP-21) and continued under the Fixing America's Surface Transportation Act (FAST). The program funds projects that provide access to, are adjacent to, or are located within Federal Lands that are owned or maintained by a State, County, Local Government, or tribe. Priority will be given to projects accessing high-use Federal recreation sites or Federal economic generators. The program intends to supplement State and local resources for public roads, trails, transit systems, and other transportation facilities.

Next Call for Projects:

November 2020 - April 2021

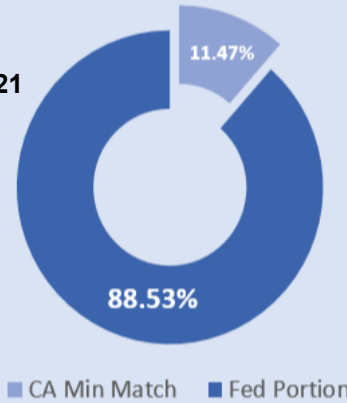
Exact dates will be posted in late October.

Advertised Amount

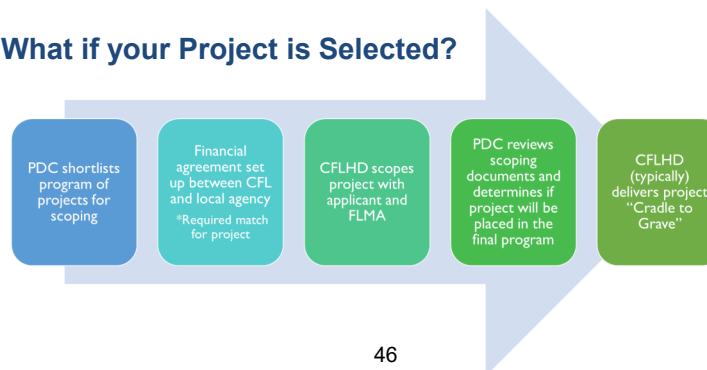
\$50-\$90 Million

Fiscal Years to Program

FY26-FY28



What if your Project is Selected?



Eligibility

Your project must:

- Be a public highway, road, bridge, trail or transit system;
- Be located on, is adjacent to, or provides access to Federal lands; typically near the vicinity of the boundary;
- Have title or maintenance responsibility vested with State, County, Local Government, or Tribe;
- Meet the minimum non-federal match requirement of 11.47% of project eligible costs, over-match is encouraged;
- Be endorsed and supported by Federal Land Management Agency (FLMA).

Type of Projects include:

- Rehabilitation/ Restoration/ Construction/ Reconstruction;
- Engineering;
- Operation and maintenance of transit facilities;
- Planning & research;
- Any transportation project eligible for assistance under Title 23.

Project Delivery

CFLHD delivers the majority of projects in the FLAP program in the 14 western states in which the division administers the program. Applicants may request delivery by another agency. CFLHD makes the final delivery decisions.

Ready to Apply? Mark the Calendar!

Application materials available
November 2020.

Visit the [CA FLAP website](#) for more details.

California Federal Lands Access Program 2020 Call for Projects

Project Submittal Requirements

✓ **Checklist**

Review program guidance, eligibility and match requirements.

✓ **Project Scope**

Develop projects with reasonable scope and cost estimate to meet federal requirements (standards, NEPA, contracting, etc.)

✓ **Data**

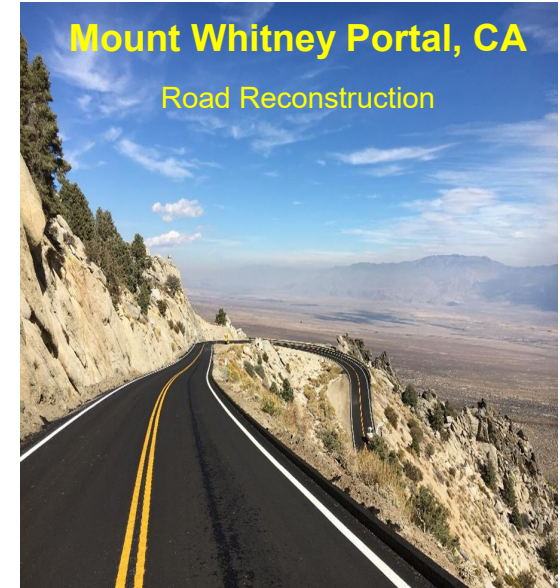
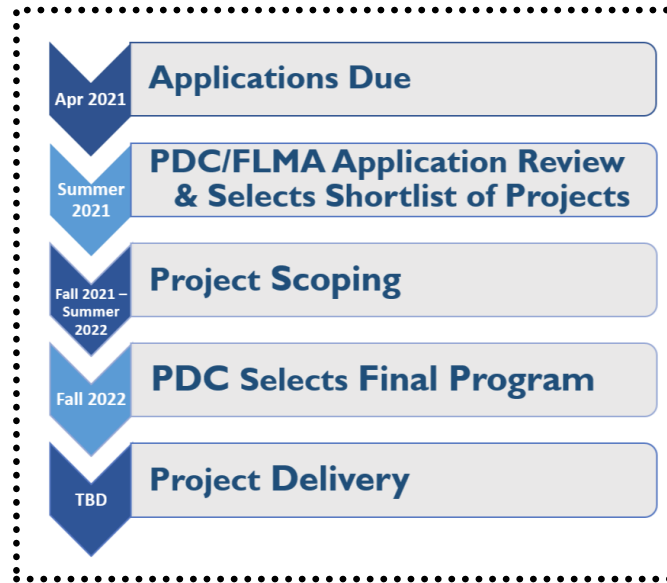
Provide best available traffic and safety data in application.

✓ **Illustrate**

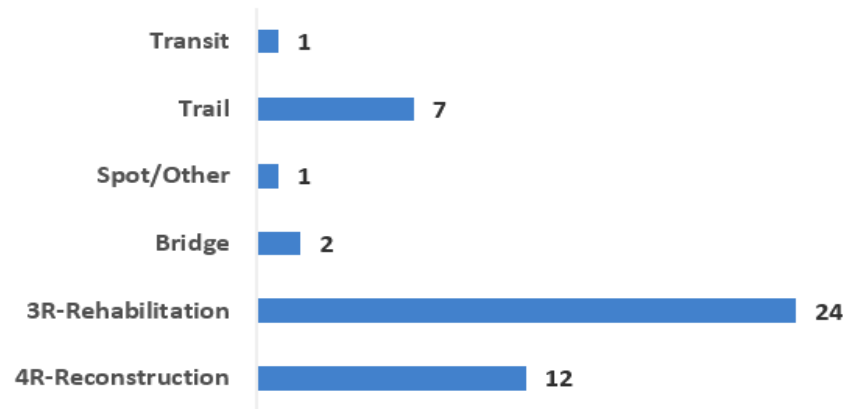
Provide photos, maps, brochures and any other information that helps the PDC understand the significance of the project and the access to federal lands.

✓ **Coordinate**

Coordinate/communicate with Federal Land Management Agency during application development.



Project Types Selected in Previous Cycles



CA Previous Call for Projects Cycles

	Applications Received	Projects Selected	FLAP Funds Requested	Total FLAP Funds Programmed
Cycle 1 (2013)	63	21	\$285 Million	\$350 Million
Cycle 2 (2014)	56	13	\$270 Million	
Cycle 3 (2017)	64	13	\$417 Million	

Attend a Prospective Applicants Webinar to Know More!

Dates TBD. See the CA FLAP website in November 2020 for additional attendance details. No registration is required.



**California Department of Transportation (Caltrans) District 11
DISTRICT LOCAL ASSISTANCE ENGINEER (DLAE) UPDATE
Imperial County Transportation Commission (ICTC)
Technical Advisory Committee (TAC)
October 22, 2020 Meeting**

New Invoice Form Required – Effective Immediately (updated August 2020)

In January 2020, Caltrans updated the new invoice form to incorporate many suggestions from staff and local agencies. Please **transmit all invoices on this new LAPM Exhibit 5-A and use the new version from August 2020.**

These following links have details with instructions -

<https://dot.ca.gov/programs/local-assistance/projects/local-agency-invoice-process>

<https://forms.dot.ca.gov/v2Forms/servlet/FormRenderer?frmid=LAPM5A>

For questions, please contact either the Local Area Engineer, Ben Guerrero, or Local Assistance Program Support Analyst, Alma Sanchez, via email at Alma.Sanchez@dot.ca.gov or by phone: 619-987-0766.

Temporary Exception for Requiring “Wet” Signatures on Invoices

The current process of requiring wet signatures on invoice documents in order to process for payment is temporarily exempted. Until further notice, scanned copies of invoices will be accepted.

For questions, please contact either the Local Area Engineer, Ben Guerrero, or Local Assistance Program Support Analyst, Alma Sanchez, via email at Alma.Sanchez@dot.ca.gov or by phone: 619-987-0766.

At-Risk Preliminary Engineering (PE) – Office Bulletin (OB) 20-03

Caltrans Division of Local Assistance released OB 20-03 on August 11, 2020, with these policy changes:

Except for projects with federal funds that require California Transportation Commission (CTC) allocation (Active Transportation Program, Trade Corridor Enhancement Program, State Transportation Improvement Program, etc.), local agencies may begin reimbursable Preliminary Engineering (PE) work prior to receiving federal authorization for such work, assuming the project and PE phase are included in a federally-approved Federal Statewide Transportation Improvement Program (FSTIP) document or an FSTIP amendment prior to incurring costs. Programming projects in the FSTIP or starting reimbursed work prior to authorization does not necessarily ensure a project is eligible for federal aid reimbursement.

National Environmental Protection Act (NEPA) approval will not occur until subsequent Right of Way and Construction phases are identified as fully funded and programmed in the FTIP.

Further information is in the full Office Bulletin available online at this following link –

<https://dot.ca.gov/-/media/dot-media/programs/local-assistance/documents/ob/2020/ob20-03.pdf>

Preparation Schedule for California Transportation Commission (CTC) Allocation Requests

Please review the following schedule of deadlines to send allocation request packages for California Transportation Commission (CTC) approval during the January 2021 CTC meeting. When possible, do not wait to submit requests. Caltrans District 11 must receive all documents at least two months prior to the CTC meeting date. Wednesday, **November 25**, 2020 is the next deadline (for the January 27-28, 2021, CTC meeting).

**2021 PREPARATION SCHEDULE
CALIFORNIA TRANSPORTATION COMMISSION (CTC) MEETINGS
AGENDA ITEM(S) DUE DATES**

Prepared by:

OFFICE OF CTC LIAISON

DIVISION OF FINANCIAL PROGRAMMING

CALIFORNIA DEPARTMENT OF TRANSPORTATION

As of:

August 2020

<p align="center">2021 California Transportation Commission (CTC) Meeting Schedule</p>	<p align="center">Local Agency Submits Off System Funds Requests, Program Amendments, and Time Extensions to Caltrans Districts</p>	<p align="center">District Submits Off System and On System Requests to HQ Divisions</p>	<p align="center">HQ Divisions Submit Final Off System and On System Requests to Budgets</p>	<p align="center">Final Agenda Language Due From HQ Divisions to Office of CTC Liaison</p>	<p align="center">Final Book Items Due from HQ Divisions to Office of CTC Liaison</p>
<p align="center">Date and Location:</p>	<p align="center">10:00 AM District and CTC</p>	<p align="center">10:00 AM HQ Divisions</p>	<p align="center">5:00 PM Email to Budgets</p>	<p align="center">10:00 AM Email to CTC Liaison OCTCL Email: CTCLiaison@dot.ca.gov</p>	<p align="center">10:00 AM Email to CTC Liaison OCTCL Email: CTCLiaison@dot.ca.gov</p>
<p align="center">Jan 27-28 - Stockton</p>	<p align="center">Mon, Nov 30, 20</p>	<p align="center">Mon, Dec 7, 20</p>	<p align="center">Mon, Dec 14, '20</p>	<p align="center">Fri, Dec 18, '20</p>	<p align="center">Mon, Dec 21, '20</p>
<p align="center">Mar 24-25 - San Diego</p>	<p align="center">Mon, Jan 25, 21</p>	<p align="center">Mon, Feb 1, 21</p>	<p align="center">Mon, Feb 8, '21</p>	<p align="center">Wed, Feb 17, '21</p>	<p align="center">Thu, Feb 18, '21</p>
<p align="center">May 12-13 - San Francisco</p>	<p align="center">Mon, Mar 15, 21</p>	<p align="center">Mon, Mar 22, 21</p>	<p align="center">Mon, Mar 29, '21</p>	<p align="center">Wed, Apr 7, '21</p>	<p align="center">Thu, Apr 8, '21</p>
<p align="center">June 23-24 - Sacramento</p>	<p align="center">Mon, Apr 26, 21</p>	<p align="center">Mon, May 3, 21</p>	<p align="center">Mon, May 10, '21</p>	<p align="center">Wed, May 19, '21</p>	<p align="center">Thu, May 20, '21</p>
<p align="center">Aug 18-19 - Los Angeles</p>	<p align="center">Mon, Jun 21, 21</p>	<p align="center">Mon, Jun 28, 21</p>	<p align="center">Tue, Jul 6, '21</p>	<p align="center">Wed, Jul 14, '21</p>	<p align="center">Thu, Jul 15, '21</p>
<p align="center">Oct 13-14 - Baskerfield</p>	<p align="center">Mon, Aug 16, 21</p>	<p align="center">Mon, Aug 23, 21</p>	<p align="center">Mon, Aug 30, '21</p>	<p align="center">Wed, Sep 8, '21</p>	<p align="center">Thu, Sep 9, '21</p>
<p align="center">Dec 8-9 - Riverside</p>	<p align="center">Mon, Oct 11, 21</p>	<p align="center">Mon, Oct 18, 21</p>	<p align="center">Mon, Oct 25, '21</p>	<p align="center">Wed, Nov 3, '21</p>	<p align="center">Thu, Nov 4, '21</p>

* No Scheduled Meeting in: February, April, July, September and November

Moved - July 4 (Observed)

Moved - Christmas

Moved - Christmas



**California Department of Transportation (Caltrans) District 11
DISTRICT LOCAL ASSISTANCE ENGINEER (DLAE) UPDATE
Imperial County Transportation Commission (ICTC)
Technical Advisory Committee (TAC)
October 22, 2020 Meeting**

FHWA Virtual Tradeshow Resources

The Tribal, Rural and Local Road Safety Virtual Tradeshow is available via this FHWA website:

https://safety.fhwa.dot.gov/local_rural/tribal/Local_Rural_Local_Road_Virtual_Trade_Show.pdf

This Virtual Booth links to many safety resources (reports, brochures, videos, etc.) on the FHWA Safety website.

Local Roadway Safety Plan (LRSP) Requirement

Highway Safety Improvement Program (HSIP) Cycle 11 (around April 2022) will require a mandatory Local Roadway Safety Plan (or the equivalent) from any agency applying for HSIP project funds.

Details regarding this requirement are available through the following link –

<https://dot.ca.gov/programs/local-assistance/fed-and-state-programs/highway-safety-improvement-program/local-roadway-safety-plans>

Construction Contract Administration Guidance

Construction on critical transportation infrastructure and most public works is designated an “essential service” by the U.S Department of Homeland Security.

Check this link for general guidance on potential impacts to current and upcoming (awarded) projects –

<http://www.localassistanceblog.com/2020/04/08/construction-contract-administration-guidance-covid-19/>

For questions, please contact the Local Area Engineer, Ben Guerrero: Benjamin.Guerrero@dot.ca.gov

New Caltrans Architectural & Engineering (A&E) Oversight Videos Online

Now available are short videos about key topics on the A&E Resources Website –

<http://www.localassistanceblog.com/2020/08/11/ae-short-video-series-is-back>

Federal Aid Series Recordings Now Available for Project Contract Administration

This recording of a recently delivered class is now available online. Training focuses on both State and federal aid highway projects.

Click this link for the recording – <https://www.fhwa.dot.gov/federal-aidessentials/catmod.cfm?id=1>

PowerPoint presentation page – <https://apps.cce.csus.edu/portal/fileShareView.cfm?forumID=6217>

Quality Assurance Program (QAP) – Renewals for 2021

The following schedule lists due dates for all applicable agencies in Imperial County. As a reminder, Quality Assurance Program (QAP) approval expires in 2021 for the County of Imperial. The City of Westmorland must have QAP approval for any possible future federal funds on projects.

Updated QAP packages must be submitted to the assigned Local Area Engineer, Ben Guerrero. Otherwise, *Construction* funding authorization requests cannot be processed.

QUALITY ASSURANCE PROGRAM (QAP)

UPDATED BY A.SANCHEZ

Agency	QAP Current	QAP Expires	
BRAWLEY	10/10/2019	10/10/2024	
CALEXICO	4/9/2020	4/9/2025	
CALIPATRIA	7/14/2019	7/14/2024	
COUNTY OF IMPERIAL	9/14/2016	9/14/2021	
EL CENTRO	5/28/2020	5/28/2025	
HOLTVILLE	7/14/2019	7/14/2024	
IMPERIAL	1/9/2017	1/9/2022	
ICTC	9/14/2016	9/14/2021	
WESTMORLAND	4/21/2015	4/21/2020	



**California Department of Transportation (Caltrans) District 11
DISTRICT LOCAL ASSISTANCE ENGINEER (DLAE) UPDATE
Imperial County Transportation Commission (ICTC)
Technical Advisory Committee (TAC)
October 22, 2020 Meeting**

Title VI Nondiscrimination Program – An Additional Requirement

A reminder for local agencies to comply with all Title VI requirements. See *Local Assistance Procedures Manual (LAPM)* Section 9.2, Title VI of the Civil Rights Act of 1964 (Title VI) and Related Statutes:

Title VI and the additional nondiscrimination requirements are applicable to all programs and activities administered by a recipient, in addition to programs receiving federal financial assistance, due to the Civil Rights Restoration Act of 1987. Nondiscrimination provisions apply to all programs and activities of federal-aid recipients, subrecipients, and contractors, regardless of tier (49 CFR part 21).

Effective immediately, all local agencies are required to insert the clause from Appendix E of the Title VI Assurance in each federal-aid contract. U.S. Department of Transportation Order No.1050.2 requires adding Appendix E, which is not included in Exhibit 4-C: Master Agreement – Administering Agency-State Agreement for Federal-Aid Projects. All local agencies must include the provisions indicated in Appendices A – E of the Title VI Assurances in all federal-aid contracts between an agency and a contractor.

The requirements also include providing and maintaining the following, as detailed in *LAPM* Section 9.2: Title VI Nondiscrimination Statement, Assurances (as part of the Master Agreement and Program Supplement Agreement), Designation of a Title VI Coordinator, Complaint Procedures, Data Collection, Training, Limited English Proficiency (LEP) accessibility, Dissemination of Information, Contracts and Agreements, Environmental Justice, Public Hearings and Meetings, Right-of-Way activities, Construction Contract Compliance, Monitoring, and others.

Note that an agency is subject to Title VI program and compliance review at any time.

Link to guidance for Title VI complaints - dot.ca.gov/programs/local-assistance/guidance-and-oversight/title-vi

Disadvantaged Business Enterprise (DBE) Procedure Updates: Office Bulletin (OB) 20-04

Caltrans Division of Local Assistance OB 20-04, issued on September 4, 2020, has several updates to Disadvantaged Business Enterprise (DBE) procedures to better reflect federal regulation requirements.

Further information is in the full Office Bulletin available online at this following link –

<https://dot.ca.gov/-/media/dot-media/programs/local-assistance/documents/ob/2020/ob20-04.pdf>

Division of Local Assistance Blog (LAB) – LocalAssistanceBlog.com – The Caltrans LAB provides clarity on issues and contributes to successful delivery of transportation projects using federal resources.

Subsidized Classes for Local Agencies – Many Are Now Online – Please Refer to Following Pages

The California Local Technical Assistance Program is a jointly funded effort between Caltrans and the Federal Highway Administration to provide local governments with training, information, technology and direct assistance to help transportation infrastructure. Upcoming courses are listed at the following link – <http://californialtap.org/index.cfm?pid=1077>

Send any questions to the California Local Technical Assistance Program Center: californialtap@csus.edu

For questions about additional training opportunities, please contact the District 11 Local Assistance Training Coordinator, Alma Sanchez, via email at Alma.Sanchez@dot.ca.gov or by phone: 619-987-0766.



Register for Trainings

The prevention and response to COVID-19 have disrupted our normal course of events. The LTAP Center encourages local agencies to explore creative ways to continue their work and we are here to help. The California LTAP Center is working to gather and share the most current information about the novel coronavirus (COVID-19), best safety practices, and to share the potential impacts on our services. We are working on updating our website and proceeding to reschedule new dates for the training courses.

Join the [California LTAP mailing list](#) to receive direct updates.

No-Cost Training For Local and Tribal Agencies

Local practitioners everywhere will have access to 120 training modules in construction, maintenance and materials – online, anytime. Courses provided by TC3 are developed through a collaboration of national best practices and a network of knowledgeable subject matter experts. [Learn more](#)

Federal Aid Trainings

Course	Date(s)	Delivery Format
FAS: Procedures for Right of Way Acquisition	TBD	One Day Virtual Delivery
FAS: Getting Your Federal Aid Started	TBD	Two-Day Virtual Delivery
FAS: Getting Your Federal Aid Started	TBD	Two-Day Virtual Delivery
FAS: Getting Your Federal Aid Started	TBD	Two-Day Virtual Delivery
FAS: Environmental Requirements	November 17-18, 2020	Day 1 12:30PM-4:30PM, Day 2 8:30AM-12:30PM
FAS: Environmental Requirements	January 20-21, 2021	Day 1: 12:30PM-4:30PM, Day 2: 8:30AM-12:30PM
FAS: Environmental Requirements	March 16-17, 2021	Day 1: 12:30PM-4:30PM, Day 2: 8:30AM-12:30PM

FAS: Environmental Requirements	May 11-12, 2021	Day 1: 12:30PM-4:30PM, Day 2: 8:30AM-12:30PM
FAS: Project Development; Design to Construction	October 6-7, 2020	Register to Attend
FAS: Construction Administration	November 4-5, 2020	8:30AM-12:30PM daily

Right of Way Trainings

Course	Date(s)	Delivery Format Register
Realty Appraisal, Acquisition and Relocation Workshop	October 27-30, 2020	Register to Attend
Realty Appraisal, Acquisition and Relocation Workshop	November 3-6, 2020	Register to Attend
Realty Appraisal, Acquisition and Relocation Workshop	December 1-4, 2020	Register to Attend
Uniform Act Basic Relocation Workshop	December 8-10, 2020	Register to Attend
Uniform Act Basic Relocation Workshop ADVANCED	December 15-17, 2020	Register to Attend

Labor Compliance

Course	Date(s)	Location
Labor Compliance	TBD	Three-Day Virtual Delivery (four hour each day)
Labor Compliance	TBD	Three-Day Virtual Delivery (four hour each day)
Labor Compliance	TBD	Three-Day Virtual Delivery (four hour each day)

Resident Engineers Academy

Course	Date(s)	Delivery Format Register
Resident Engineers Academy	October 5-9, 2020	Training is FULL
Resident Engineers Academy	November 2-6, 2020	Intent to Attend
Resident Engineers Academy	November 30--December 4, 2020	Training is FULL
Resident Engineers Academy	January 11-15, 2021	Intent to Attend
Resident Engineers Academy	Spring 2021	Five-Day Virtual Delivery

PILOTING EXPERIMENTAL MARKING



The California Manual on Uniform Traffic Control Devices (CA MUTCD) Section 1A.10 provides guidance on how new traffic control devices and applications of existing traffic control devices not adopted in the CA MUTCD can be implemented on public roads and private roads open to the public in California.

For new traffic control device policy to be implemented, an experiment must be completed to determine the viability of the new device or new application of an existing device. In some cases, an experiment has already been completed and the new policy received Interim Approval (IA). IAs allow interim use, pending official rule making, of the new policy. Before submitting a request for experimentation, review the existing IAs and policy for how to implement the IAs.

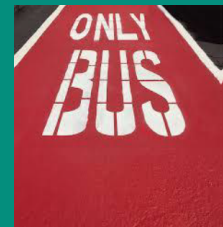
▶▶▶ WHAT TO INCLUDE

1. A statement indicating the nature of the problem.
2. A description of the proposed change to existing policy, and how it will be an improvement over existing standards.
3. An illustration of the proposed change.
4. Information on how the device was developed and if it has been tried before.
5. A legally binding statement certifying that the concept of the traffic control device is not protected by patent or copyright.
6. Time period and location(s) of the experiment.
7. Detailed research & evaluation plan to provide close monitoring.
8. An agreement to restore the experiment site within 3 months of the completion of the experiment. Also, to end the experiment if there are safety concerns that are directly or indirectly attributable to the experiment.
9. An agreement to provide semi-annual progress reports and a final report.



DID YOU KNOW?

Colored Marking are allowed but has to go through a process.



▶▶▶ Request for Experiment Resources

Click on the buttons below

CA MUTCD, 2014 Revision 5

- Request for experiment guidelines and standards

CTCDC Website

- Request for experiment examples and other resources

CTCDC Brochure

- CTCDC members who can sponsor an experiment

Interim Approvals

- List of existing Interim Approvals

Experimentation Process ◀◀◀

- 1 | Submit request for experimentation to the Federal Highway Administration (FHWA).
- 2 | Upon FHWA approval, submit request to the CTCDC.
- 3 | Upon approval of to experiment by the FHWA and CTCDC, install the experimental traffic control devices.
- 4 | Throughout the experiment, send semi-annual reports to the CTCDC.
- 5 | After completion of the experiment, provide the FHWA and CTCDC with the final report.
- 6 | If the CTCDC accepts the new device, the CTCDC recommends to Caltrans to adopt the new device.
- 7 | Caltrans develops the new policy and presents it to the CTCDC for discussion with the public.
- 8 | Upon CTCDC approval, the new policy will be included in the next CA MUTCD update.



Stay Informed:

California Department of Transportation
HQ Safety Programs
1120 N St. MS 36 | Sacramento CA, 95814



camutcd@dot.ca.gov



<https://dot.ca.gov/programs/safety-programs>