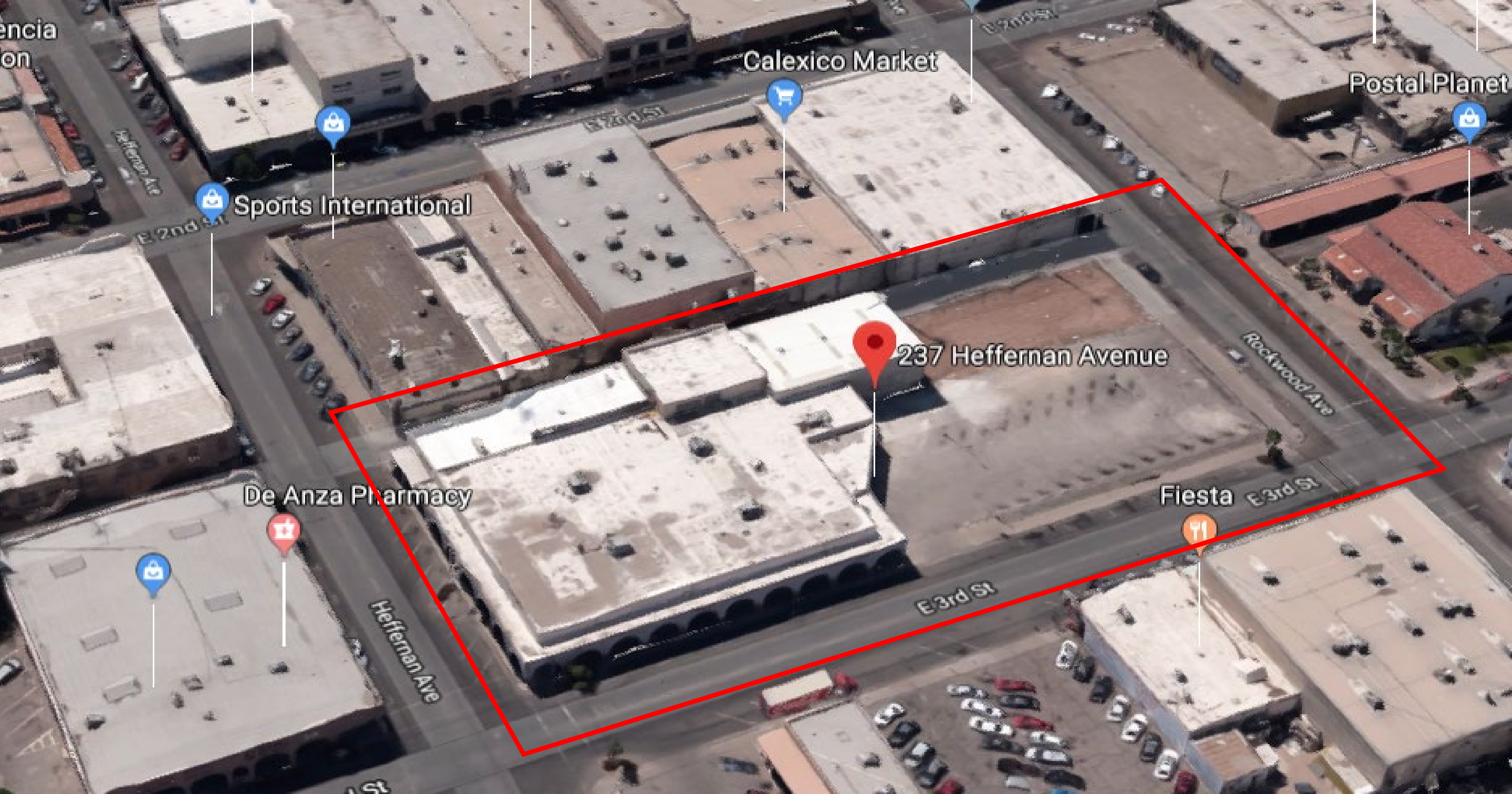


Attachment C
Location Map



Project location is along the Southside of 3rd Street between Rockwood Avenue and Heber Avenue. In addition, the project will include ADA pedestrian improvements at adjacent sidewalk intersections; ADA pedestrian improvements along the north end of 3rd Street between Heffernan Avenue and Heber Avenue; and ADA pedestrian improvements along Heffernan Avenue between 1st Street to 3rd Street and along Rockwood Avenue between 1st Street to 3rd Street.



Parcel Number

Parcel (AC)

058-482-002

0.83

058-482-001

0.23

058-482-003

0.06