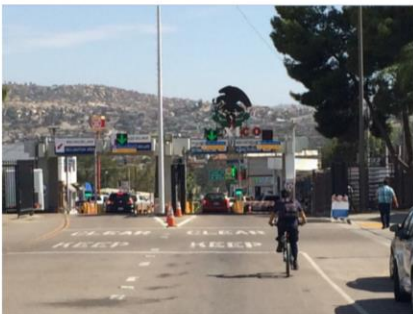


# IMPERIAL COUNTY TRANSPORTATION COMMISSION

PEDESTRIAN AND BICYCLE TRANSPORTATION ACCESS STUDY FOR THE  
CALIFORNIA/BAJA CALIFORNIA LAND PORTS OF ENTRY



# IMPERIAL COUNTY TRANSPORTATION COMMISSION

---

PEDESTRIAN AND BICYCLE TRANSPORTATION ACCESS STUDY OF THE  
CALIFORNIA/BAJA CALIFORNIA LAND PORTS OF ENTRY

## ACKNOWLEDGEMENTS

### **Lead and Partner Agencies**

Imperial County Transportation Commission (ICTC) – Lead Agency  
California Department of Transportation (Caltrans)  
San Diego Association of Governments (SANDAG)  
Secretaría de Infraestructura y Desarrollo Urbano del Estado (SIDUE)

### **Funding**

State Highway Planning and Research Funds Program

### **Agency Working Group**

Caltrans  
City of Calexico  
City of San Diego  
County of Imperial  
County of San Diego  
ICTC  
Instituto de Administración y Avalúos de Bienes Nacionales (INDAABIN)  
Instituto Metropolitano de Planeación de Tijuana (IMPLAN) and the Municipio de Tijuana  
Instituto Municipal de Investigación y Planeación de Mexicali (IMIP) and the Municipio de Mexicali  
Municipio de Tecate  
SANDAG  
SIDUE  
Southern California Association of Governments (SCAG)  
U.S. Customs and Border Protection (CBP)  
U.S. General Services Administration (GSA)

### **Consultant Team**

KOA Corporation – Prime Consultant  
AECOM  
CityPlace Planning  
Hussong Translations & Interpreting  
Parsons Brinckerhoff

### **Appreciation of Support**

The study team would like to thank the members of the public, community groups, and local, state, and federal agencies from the United States and Mexico who participated in this study.

### **Photo Credits**

All photos and figures produced by the consultant team unless otherwise noted.  
Title page photo credits: GSA and KOA Corporation



## I.0 EXECUTIVE SUMMARY



*A bicyclist rides towards the Tecate/Tecate POE*

### **35.5 million**

The combined total of pedestrians and bicyclists who crossed the U.S./Mexico international border through the California/Baja California POEs in 2013

California and Baja California share a 150-mile international border extending from the Pacific Ocean to the Colorado River. In 2013, 35.5 million pedestrians and bicyclists crossed the border at one of the six land ports of entry (POEs) providing access to travelers between California and Baja California<sup>1,2</sup>. Several previous studies have analyzed passenger and commercial vehicle travel at the border as well as economic impact of binational travel. However, there has never before been a study to assess the cross-border infrastructure for pedestrians and bicyclists at either the United States' southern border with Mexico or northern border with Canada. As a result, the California State Department of Transportation (Caltrans) was awarded a State Planning and Research grant to fund a year-long study of pedestrian and bicycle transportation access at the California/Baja California POEs. The Imperial County Transportation Commission (ICTC) served as the lead agency in carrying out the study, in coordination with Caltrans, the San Diego Association of Governments (SANDAG), and binational local, state, and federal agencies and community members.

<sup>1</sup> Land ports of entry will hereafter be referred to as "ports of entry," "ports," or "POEs."

<sup>2</sup> 2013 data from Transborder.bts.gov, "Border Crossing/Entry Data: Query Detailed Statistics," Research and Innovative Technology Administration (RITA), U.S. Department of Transportation. As there is no equivalent southbound crossing data, we have assumed that comparable demand exists for northbound and southbound vehicle and pedestrian crossings. Please see Appendix A for details on crossing volume and wait time source information pertinent to this citation as well as the study as a whole.



*A recently completed Caltrans project in Andrade improved pedestrian and bicycle access to the port with pathway enhancements and amenities*

The goal of this study is to improve the travel experience for people walking or bicycling across the California/Baja California border, seeking to make trips safer, easier, and more comfortable around the POEs. Suitable infrastructure for pedestrians and bicyclists not only encourages active transportation at the border but also results in positive environmental, economic, and community health benefits for the binational border region. Shifting some travel to active transportation modes such as walking and bicycling has been shown to increase life expectancy and reduce health costs associated with heart disease, stroke, diabetes, dementia, depression, and breast and colon cancer, as well as to reduce pollutants and greenhouse gas emissions, and facilitating cross-border travel produces billions of dollars of economic benefit on both sides of the border<sup>3,4</sup>.

A Spanish-language version of this Executive Summary and the complete matrix of recommendations from the study can be found separately on ICTC's website.

## 1.1 INTRODUCTION

The California/Baja California border region has a population of 6.4 million people, with a population of 10.6 million people expected in the year 2040<sup>5</sup>. It is projected that 48.4 million pedestrians and bicyclists will cross the border between California and Baja California in the year 2040, an increase of almost 13 million border crossers in comparison to current volumes<sup>6</sup>. This growing population continues to increase demand for crossborder travel and add pressure to the existing port of entry facilities.

There are six existing POEs providing access to travelers between California and Baja California. From west to east, they are:

- San Ysidro/Puerta México-El Chaparral POE
- Otay Mesa/Mesa de Otay POE
- Tecate/Tecate POE
- Calexico West/Mexicali I POE
- Calexico East/Mexicali II POE
- Andrade/Los Algodones POE

One new port (Otay Mesa East-Mesa de Otay II) and one cross-border facility (Cross Border Xpress) are currently planned for the California/Baja California Border, and major infrastructure changes at the San Ysidro/Puerta México-El Chaparral and the Calexico West/Mexicali I POEs are currently under way.

### **\$3.69 billion**

Estimated revenue that will be lost binationally due to border delays in 2017

<sup>3</sup> *From Policy to Pavement: Implementing Complete Streets in the San Diego Region* (San Diego Complete Streets Task Force, June 2012)

<sup>4</sup> *Economic Impacts of Wait Times at the California-Mexico Border 2009 Update* (HDR Decision Economics, January 2010)

<sup>5</sup> *California-Baja California 2014 Border Master Plan Update* (Caltrans, July 2014)

<sup>6</sup> *California-Baja California 2014 Border Master Plan Update* (Caltrans, July 2014) Annual northbound pedestrian crossings in the year 2040 anticipated to reach 24.2 million persons. As there is no equivalent southbound crossing data, we have assumed that comparable demand exists for northbound and southbound pedestrian crossings. As of 2014, bicycle and pedestrian crossings are counted together.

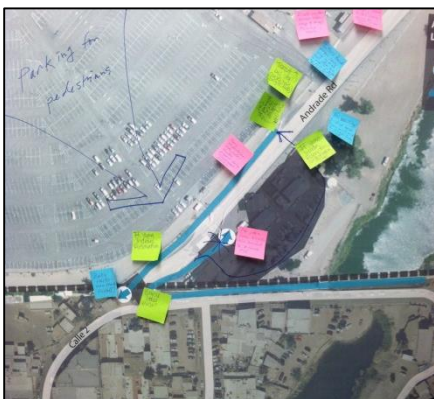
## 150,000 barrels of oil

Biannual green house gas emissions due to border delays in San Diego County are equivalent to consuming over 150,000 barrels of oil each year

Well-planned and designed border crossing infrastructure for pedestrians and bicyclists is important not only because of high existing demand and impending population growth, but also because of the environmental, health, and economic impacts of facilitating non-motorized travel. Northbound border delays in San Diego County have been shown to produce between 74,700 and 82,600 metric tons of carbon dioxide every six months, the equivalent of consuming over 150,000 barrels of oil, and respiratory illness, asthma, cardiovascular disease, increased mortality, and adverse birth outcomes are just a few of the health effects associated with living and working near high-traffic areas<sup>7</sup>.

Ensuring adequate border crossing facilities also has positive economic impacts. Currently, demand at some POEs can lead to pedestrians and vehicles waiting to cross the border for multiple hours at a time. These delays in personal travel caused a loss of business revenue of \$2.26 billion in California and \$278 million in Baja California in 2008, with \$3.69 billion in combined revenue losses anticipated for the year 2017<sup>8</sup>.

The results of this study assess current conditions at the POEs and provide a list of recommended infrastructure projects, programs, public educational opportunities, and policies aimed at improving the border crossing experience for the millions of people crossing on foot or by bike each year. The study is divided into nine chapters including this Executive Summary. Each of the subsequent chapters, excluding the introduction, is briefly discussed below, followed in section 1.9 by a condensed list of recommended projects and policies.



A map of the Andrade/Los Algodones POE after an Imperial County Focus Group meeting

## 1.2 COMMUNITY AND PUBLIC INVOLVEMENT

This study included extensive outreach efforts that took place over ten months in multiple locations along the U.S./Mexico border, giving stakeholder groups as well as members of the general public the opportunity to provide their input and make an impact on the content of the study. The graphic on the next page displays the study process and timeline, showing progression from project kick-off to the production of the final report a year later.

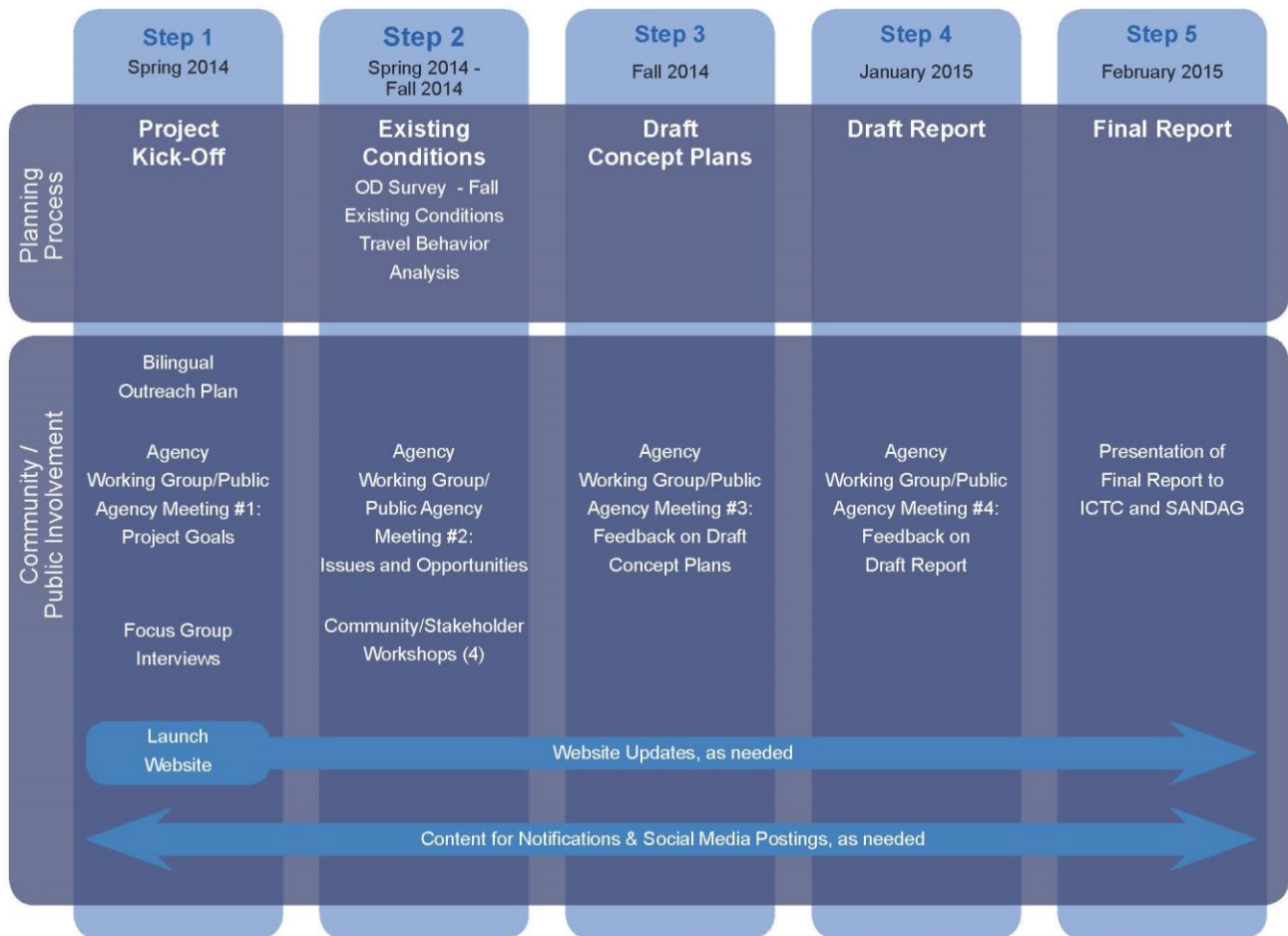
As part of the outreach efforts, a project website was developed with periodic content updates and a link to the eAudit, an online participation tool which allowed members of the public to provide their input on issues and opportunities at the ports from anywhere with an internet connection. Hundreds of comments were documented using the eAudit tool, with input ranging from documentation of missing bicycle signage to pinpointing locations where travelers felt unsafe at night because of lack of lighting.

<sup>7</sup> U.S.-Mexico Border Crossings at San Ysidro: Social and Environmental Effects for Pedestrian Crossers and San Diego Communities (Presentation) (SDSU Graduate School of Public Health, Casa Familiar, San Diego Prevention Research Center)

<sup>8</sup> Economic Impacts of Wait Times at the California-Mexico Border 2009 Update (HDR Decision Economics, January 2010)



## Process and Timeline



A variety of in-person outreach events were conducted in addition to the online outreach efforts. The Agency Working Group, whose membership included 15 agencies from both sides of the border, met four times over the course of the study to provide input and information to the study team. The members of the binational Agency Working Group were:

### Over 1,000 comments

Received during the  
community and public  
outreach process

- Caltrans
- City of Calexico
- City of San Diego
- County of Imperial
- County of San Diego
- ICTC
- Instituto de Administración y Avalúos de Bienes Nacionales (INDAABIN)
- Instituto Metropolitano de Planeación de Tijuana (IMPLAN) and the Municipio de Tijuana
- Instituto Municipal de Investigación y Planeación de Mexicali (IMIP) and the Municipio de Mexicali

- Municipio de Tecate
- SANDAG
- Secretaría de Infraestructura y Desarrollo Urbano del Estado (SIDUE)
- Southern California Association of Governments (SCAG)
- U.S. Customs and Border Protection (CBP)
- U.S. General Services Administration (GSA)



*Summer 2014 Focus Group meeting in  
Imperial County*

A total of ten focus group sessions were held in San Diego and Imperial Counties in summer and fall 2014 to engage representatives from diverse backgrounds, including city and county governments from California and Baja California; border security agencies; transit and transportation agencies; non-governmental organizations (NGOs); ICTC, SANDAG, and Caltrans working groups; community and neighborhood groups; employers; major institutions; and economic development interests. On-site Outreach Workshops were also conducted at each of the six POEs in the study area to engage cross-border travelers in one-on-one conversations with the study team. One thousand comments were received as a result of the Focus Group meetings and On-Site Outreach Workshops. Findings from all of the outreach efforts were rich and varied, ranging from broad policy changes and operational suggestions to location-specific details such as identification of an area where trash frequently piles up or a shade tree could be planted.

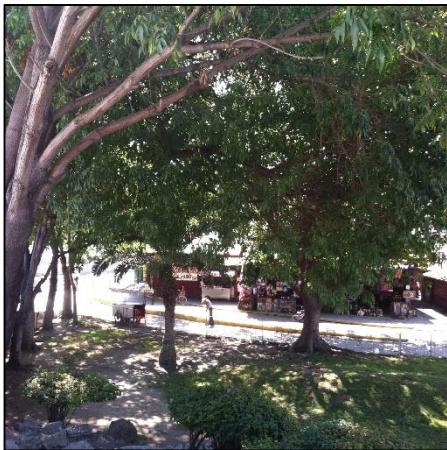
## **1.3 EXISTING CONDITIONS ANALYSIS AND ASSESSMENT**

The goal of the existing conditions analysis was to evaluate pedestrian and bicycle conditions at each port, with the aim of creating an environment that facilitates walking and cycling at each POE. Findings from the community and public involvement phase of the study shaped the development of the existing conditions review, resulting in a user-focused approach to the existing conditions assessment.



*Pedestrians approach the southbound  
pathway at the San Ysidro POE*

A unique study area was first developed for each port, connecting the port facility to major origins and destinations nearby. Then a network connectivity assessment and a network amenities assessment were conducted at each POE, identifying gaps, maintenance issues, and other barriers to walking and biking in the study area, as well as evaluating the availability of amenities such as water fountains, benches, shade, bicycle racks, transit shelters, and restrooms. The results from the analysis at each port are discussed in the Existing Conditions Analysis and Assessments chapter. Major findings include lack of basic amenities such as restrooms, water fountains, bilingual signage, and shade at many of the ports' approach and departure pathways for pedestrians, and nonexistent or limited bicycle infrastructure at all of the POEs.



*Landscaping outside the Puerta México  
POE*

## I.4 PLANNED IMPROVEMENTS AND FUTURE CONDITIONS

As each port has unique demand, capacity, and character, planned improvements and future conditions at each POE vary widely. The San Ysidro/Puerta México-El Chaparral and the Calexico West/Mexicali I POEs are undergoing major renovations and expansions, as noted in section I.1. New roadway and pedestrian pathway configurations and increased inspection capacity projects are in various stages of planning, construction, and completion at these POEs. More minor improvements or operational changes are planned at the other four existing ports.

One POE and one cross-border facility are planned as well. The Otay Mesa East/Mesa de Otay II port will serve freight (“commercial”) and personal traveler (“passenger”) traffic, and will absorb some of the existing demand at the San Ysidro/Puerta México-El Chaparral and Otay Mesa/Mesa de Otay POEs. Cross Border Xpress will be a privately funded facility which will provide pedestrian access from General Abelardo L. Rodríguez International Airport to the United States for a fee.



*U.S./Mexico border delineation in the  
roadway at the Tecate/Tecate POE*

## I.5 TRAVEL BEHAVIOR SURVEY RESULTS

In order to better understand the needs of pedestrians and bicyclists who cross the border between the U.S. and Mexico at the six ports of entry between California and Baja California, information needed to be gathered about the types of users, their reasons for traveling, and the frequency with which they cross the border. Two existing studies provided the majority of the necessary travel behavior information. However, the mode of transportation for border crossers continuing the trip into the U.S. was not addressed for all six POEs, as this data was not recorded at the Otay Mesa/Mesa de Otay or the Tecate/Tecate ports of entry. Supplemental surveys were thus completed to gather data at these two locations. A summary of the existing and supplemental data is included in the Travel Behavior Survey Results chapter.



## I.6 RECOMMENDED PROJECTS AND POLICIES

One hundred and two recommended projects and policies were developed as a result of the Existing Conditions and Public Outreach phases of this study. Recommended projects were reviewed and revised based on input from local, state, and federal agencies and community groups from both the United States and Mexico. Seventy percent of the recommendations represent pedestrian and bicycle projects, while the rest are policies and transit and vehicle projects.

### 102 Recommended Projects and Policies

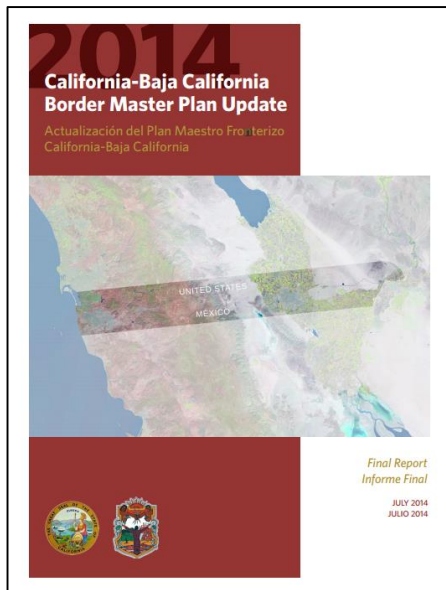
- 34 Pedestrian Projects  
(16 U.S./18 Mexico)
- 37 Bicycle Projects  
(18 U.S./19 Mexico)
- 12 Transit Projects  
(8 U.S./4 Mexico)
- 12 Vehicle Projects  
(6 U.S./6 Mexico)
- 7 Policies  
(Binational)



Sample project recommendations map for the Calexico West/Mexicali I POE. Full scale map available in section I.9 and in Chapter 7

A summary version of the recommended projects at each POE is included both in section I.9 and in the Recommended Projects chapter, along with maps depicting the location of each proposed project. A complete list of recommended projects and policies sorted by POE, country, and project type is available in Appendix H. The line item for each project includes:

- Project number
- Project name
- Country
- Jurisdiction
- Type (pedestrian, bicycle, vehicle, or transit)
- Limits
- Brief description
- Agency stakeholders
- Estimated cost



California/Baja California 2014 Border  
Master Plan Update

- Related plans and programs
- Source of the recommendation
- Identification of short-term or long-term project timeline

Concept mapping for each project and concept plans developed for select projects can be found in Appendix G. Cost estimates for both the U.S. and Mexico were completed in U.S. dollars, and line-item information on cost estimates for each project is available in Appendix H. Design Guidelines for POE pedestrian and bicycle access were also developed and can be found in Appendix I. A transit feasibility report for a bus service between the Calexico East and West POEs can be found in Appendix J. This report discusses the potential demand for such a service and describes the most cost-effective service level option.

## I.7 FUNDING AND IMPLEMENTATION OPPORTUNITIES

Implementation of the recommended projects depends on available funding sources. A list of potential funding sources for infrastructure projects in each country is provided in the Funding and Implementation Opportunities chapter along with a brief description of each source. The federal, state, local, private, and tribal funding sources listed in the chapter give stakeholder agencies the opportunity to find funding sources that best match their projects and pursue them based on program criteria. Coordination between the United States and Mexico and among multiple levels of government in both nations is crucial to project implementation in these sensitive POE locations.

## I.8 NEXT STEPS

ICTC, Caltrans, SANDAG, SIDUE, IMPLAN, IMIP, and the other integral partners in this study have a vision for improved access for the millions of bicycle and pedestrian border crossers. The binational goal for the California/Baja California POEs is to facilitate safe, easy, and comfortable cross-border trips for pedestrians and bicyclists. Projects and policies that support this vision must be included in local, state, and federal plans in both the United States and Mexico, especially in the subsequent updates of the California/Baja California Border Master Plan (BMP). The BMP, a binational document for coordinating the planning and delivery of port-related projects in the region, was most recently updated in 2014.

The last step in the study process was to present the Final Study to ICTC in February 2015 and the SANDAG Board of Directors in March 2015. Subsequently, implementation of projects identified in the Final Study will be dependent on funding secured by stakeholder agencies and will also be submitted during the next BMP update process.

Projects and policies that support the vision for the California/Baja California POEs must be included in local, state, and federal **plans in both the United States and Mexico**, especially in the subsequent updates of the **California/Baja California Border Master Plan**

## I.9 CONDENSED PROJECT LIST

The table below lists each of the 102 recommended projects and policies with their associated project numbers, names, limits, descriptions, and cost estimates. The recommendations are organized by port, and then by country and type (pedestrian, bicycle, transit, or vehicle). The full list of recommended projects and policies, including information on Jurisdiction, Agency Stakeholders, Related Plans and Programs, Source of Recommendations, and identification of Short-Term or Long-Term timeline, can be found in Appendix H. Maps locating each project follow the recommendations for each port; policy recommendations are listed at the end of the section.

### SAN YSIDRO/PUERTA MÉXICO-EL CHAPARRAL POE

Mexico	Pedestrian Project Recommendations
<b>Project 1</b>	<b>Tijuana Pedestrian-Friendly Crossing Improvements (\$218,000)</b>
Various Intersections	Create pedestrian-friendly crossings at intersections of Av Frontera and Av Ferrocarril, Alfonso Reyes and Línea Internacional, and northbound ramp gore at Paseo Centenario Tijuana connecting to Av Ferrocarril.
<b>Project 2</b>	<b>Puerta México-El Chaparral Pedestrian Pathway Enhancements (\$982,000)</b>
Pedestrian processing to Av de la Amistad and Av Frontera	Add restrooms, water fountains, benches, shade for pathways and waiting areas, information kiosks, and informational signage. Add additional directional signage, lighting, shade for queuing area, pedestrian sidewalk ramps, and lane segmentation. Consider widening queue area. As an interim improvement, add additional lighting, shelter, and seating for transit stop.
<b>Project 3</b>	<b>Tijuana Pedestrian-Friendly Sidewalk Improvements (\$268,000)</b>
Av de la Amistad, Paseo Centenario Tijuana, and Línea	Sidewalk rehabilitation and installation of pedestrian ramps, crosswalks, signage, and lighting along Av de la Amistad, Paseo Centenario Tijuana, and Línea Internacional.
Mexico	Bicycle Project Recommendations
<b>Project 4</b>	<b>Puerta México - El Chaparral Bicycle Border Crossing (\$300,000)</b>
POE	Create northbound and southbound bicycle-only inspection lanes with appropriate amenities. Appropriate amenities depend on whether lanes are designed for mounted bicyclists or bicyclists who are dismounted and crossing as pedestrians.
<b>Project 5</b>	<b>Bicycle Routes in Tijuana (\$584,000)</b>
Various	Construct planned bicycle routes in Tijuana. Additionally, construct routes to establish connections between planned routes and the POE. Install bicycle-related signage.
<b>Project 6</b>	<b>Bicycle Parking in Tijuana (\$7,000)</b>
Within a three minute walk of the pedestrian queue	Construct bicycle parking at the Puerta México Este and El Chaparral POE. Consider secure parking and storage where possible.
Mexico	Transit Project Recommendations
<b>Project 7</b>	<b>Tijuana Intermodal Transit Center (\$50,000,000)</b>
Colonia Cuauhtémoc area	Build an ITC with pedestrian, bus, and taxi services and a connected commercial development.



# IMPERIAL COUNTY TRANSPORTATION COMMISSION

PEDESTRIAN AND BICYCLE TRANSPORTATION ACCESS STUDY OF THE  
CALIFORNIA/BAJA CALIFORNIA LAND PORTS OF ENTRY

<b>Project 8</b>	<b>Puerta México-El Chaparral Mobility Hub (\$750,000 Bike Share only)</b>
Within a three minute walk of the pedestrian queue	Construct a mobility hub near the POE. Bicycle share is recommended; other appropriate services at this location dependent on further study.
<b>Mexico</b>	<b>Vehicle Project Recommendations</b>
<b>Project 9</b>	<b>Puerta México Passenger Pick-Up/Drop-Off Zone (\$107,000)</b>
Within a three minute walk of the pedestrian queue	Create sufficient and exclusive pick up/drop off zones at an appropriate location at the Puerta México POE. Include benches, signage, shade, and lighting.
<b>Project 10</b>	<b>Av de la Amistad Roundabout Improvements (\$1,925,000)</b>
Intersection of Av de la Amistad and Av Frontera	Improve Av de la Amistad and Av Frontera roundabout to be more pedestrian-friendly. Additionally consider installing speed bumps and traffic signals to improve pedestrian safety.
<b>United States</b>	<b>Pedestrian Project Recommendations</b>
<b>Project 11</b>	<b>East San Ysidro Blvd Pedestrian-Friendly Crossing Improvements (\$141,000)</b>
East San Ysidro Blvd	Enhance intersection of East San Ysidro Blvd north of San Ysidro Transit Center to be more pedestrian and bicycle-friendly.
<b>Project 12</b>	<b>San Ysidro Pedestrian Pathway Enhancements (\$1,215,000)</b>
Pedestrian processing to East San Ysidro Blvd	Add restrooms, information kiosk, shade for queuing area, and informational signage. Add additional directional signage, benches, lighting, and shade for waiting and transit areas. Improve overall design/view of necessary security features. Improve segments of sidewalk.
<b>Project 13</b>	<b>San Ysidro Sidewalk Improvements (\$28,000)</b>
East San Ysidro Blvd, Camino de la Plaza	Add missing pedestrian sidewalk ramps, crosswalks, and sidewalk.
<b>United States</b>	<b>Bicycle Project Recommendations</b>
<b>Project 14</b>	<b>San Ysidro Bicycle Border Crossing (\$300,000)</b>
POE	Create northbound and southbound bicycle-only inspection lanes with appropriate amenities. Appropriate amenities depend on whether lanes are designed for mounted bicyclists or bicyclists who are dismounted and crossing as pedestrians.
<b>Project 15</b>	<b>Bicycle Routes in San Ysidro (\$212,000)</b>
Various	Construct planned bicycle routes in San Ysidro. Additionally, construct routes to establish connections between planned routes and the POE. Install bicycle-related signage.
<b>Project 16</b>	<b>Bicycle Parking in San Ysidro (\$7,000)</b>
Within a three minute walk of the pedestrian queue	Construct additional bicycle parking at the east and west facilities of the San Ysidro POE. Consider secure parking and storage where possible.
<b>United States</b>	<b>Transit Project Recommendations</b>
<b>Project 17</b>	<b>San Ysidro Intermodal Transportation Center (\$138,200,000)</b>
Current location of ITC plus additional area	Build an ITC to provide a centralized facility for the Trolley, local and long distance buses, taxis, jitneys, and bicycles.

## IMPERIAL COUNTY TRANSPORTATION COMMISSION

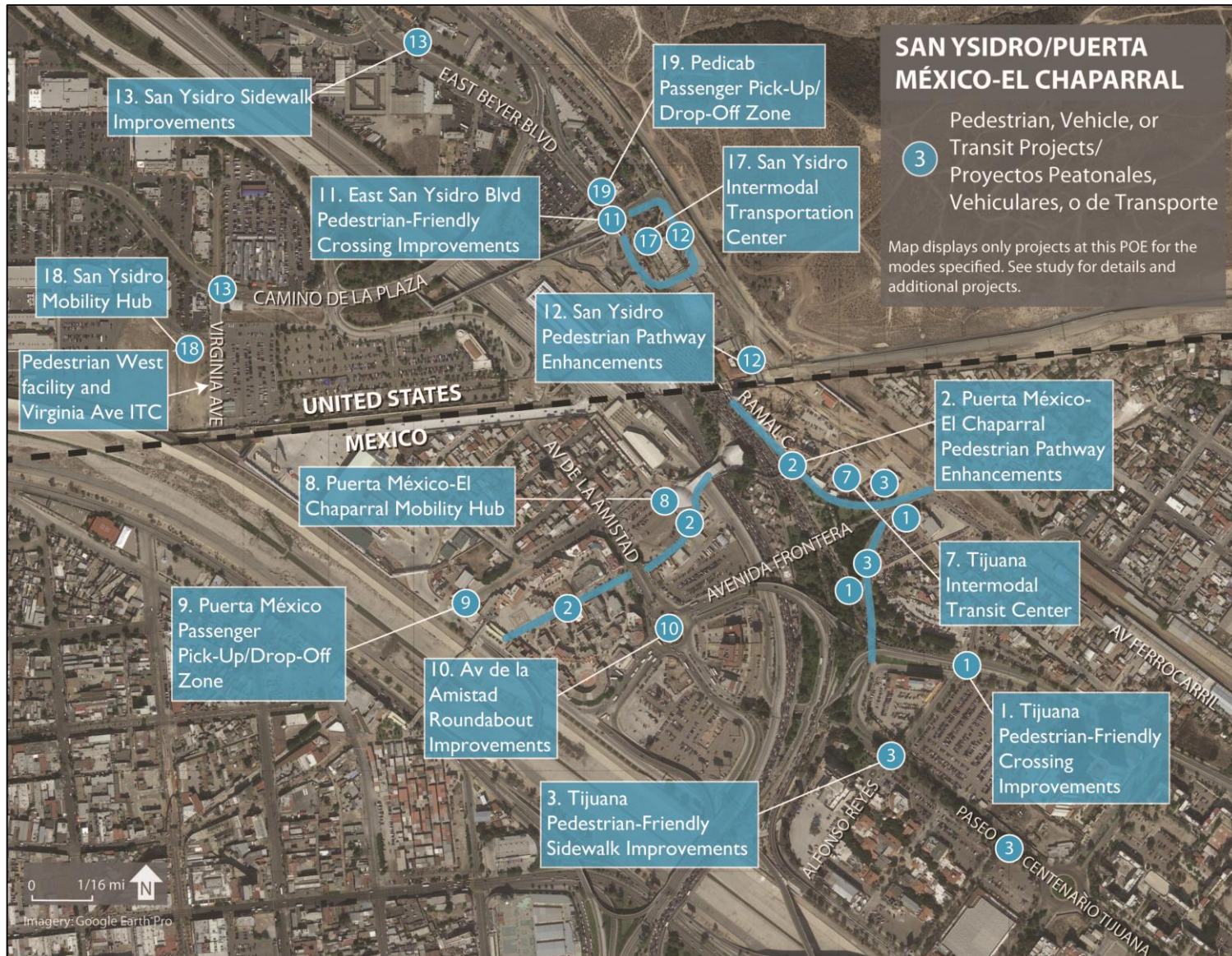
PEDESTRIAN AND BICYCLE TRANSPORTATION ACCESS STUDY OF THE  
CALIFORNIA/BAJA CALIFORNIA LAND PORTS OF ENTRY

<b>Project 18</b>	<b>San Ysidro Mobility Hub (\$750,000 Bike Share only)</b>
Within a three minute walk of the pedestrian queue	Construct a mobility hub near the POE. Bicycle share is recommended; other appropriate services at this location dependent on further study.
<b>Project 19</b>	<b>Pedicab Passenger Pick-Up/Drop-Off Zone (\$8,000)</b>
East San Ysidro Blvd north of San Ysidro ITC	As an interim improvement, add signage and paint curb to designate pedicab pick-up/drop-off zone north of the San Ysidro Intermodal Transportation Center.

# IMPERIAL COUNTY TRANSPORTATION COMMISSION

## PEDESTRIAN AND BICYCLE TRANSPORTATION ACCESS STUDY OF THE CALIFORNIA/BAJA CALIFORNIA LAND PORTS OF ENTRY

**Figure I.1 San Ysidro/Puerta México-El Chaparral Pedestrian, Transit, and Vehicle Projects**

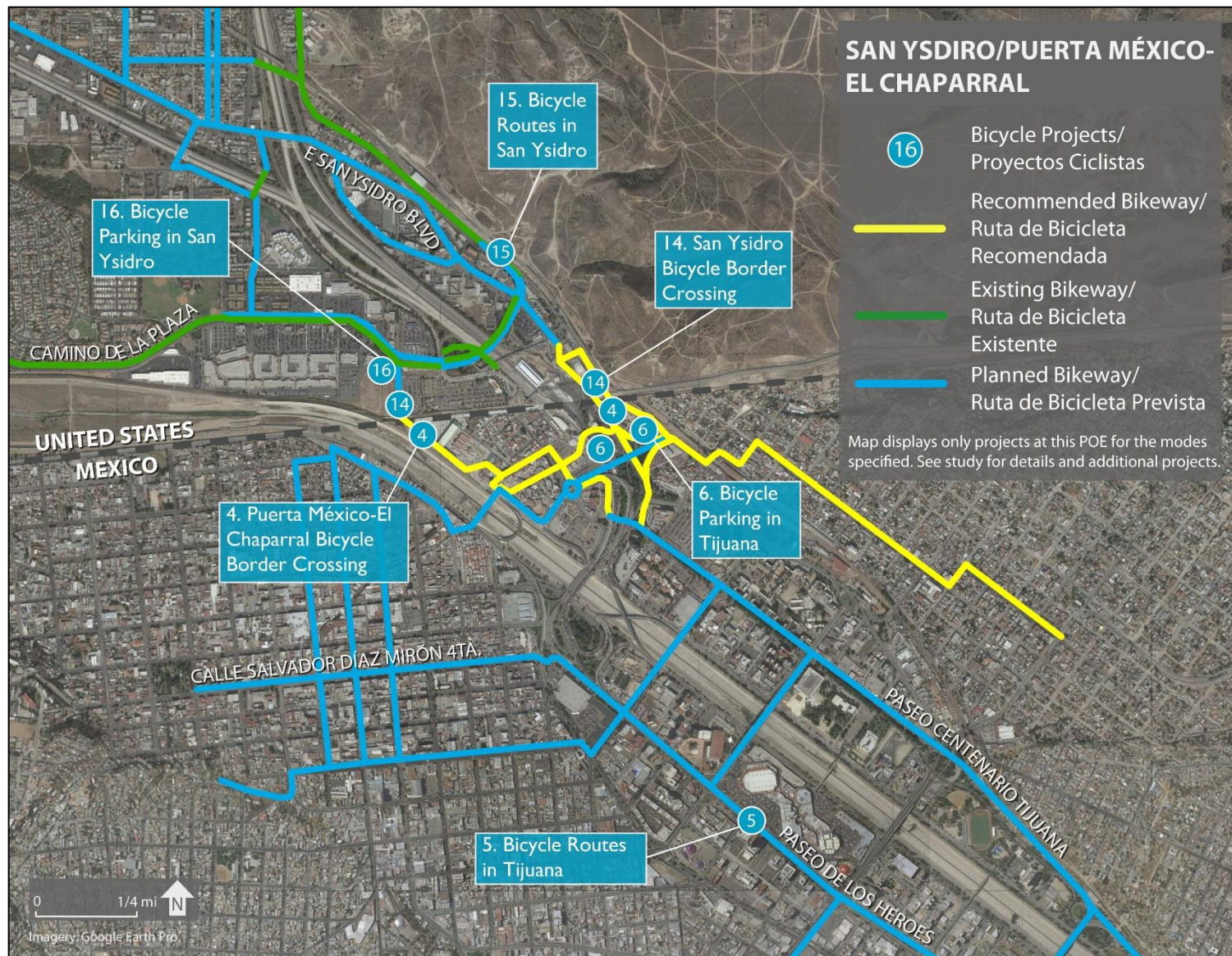




# IMPERIAL COUNTY TRANSPORTATION COMMISSION

## PEDESTRIAN AND BICYCLE TRANSPORTATION ACCESS STUDY OF THE CALIFORNIA/BAJA CALIFORNIA LAND PORTS OF ENTRY

**Figure 1.2 San Ysidro/Puerta México-El Chaparral Bicycle Projects**



# IMPERIAL COUNTY TRANSPORTATION COMMISSION

PEDESTRIAN AND BICYCLE TRANSPORTATION ACCESS STUDY OF THE  
CALIFORNIA/BAJA CALIFORNIA LAND PORTS OF ENTRY

## OTAY MESA/MESA DE OTAY POE

Mexico	Pedestrian Project Recommendations
<b>Project 20</b>	<b>Blvd Garita de Otay Pedestrian Bridge (\$1,440,000)</b>
Blvd Garita de Otay	Construct east-west pedestrian bridge over Blvd Garita de Otay.
<b>Project 21</b>	<b>Colina del Sol Multi-Purpose Path (\$189,000)</b>
Colina del Sol from Sor Juana Inés de la Cruz to Blvd de las Bellas Artes	Construct a multi-purpose path in the median between Calle Colina del Sol and Calle Josefina Rendon Parra from Av Sor Juana Inés de La Cruz to Boulevard de las Bellas Artes.
<b>Project 22</b>	<b>Blvd Garita de Otay Interim Pedestrian Crossing and Two-Way Turnstile Removal (\$8,000)</b>
Blvd Garita de Otay	Add interim solution for pedestrian crossing across Boulevard Garita de Otay until pedestrian bridge project is completed. Remove two-way turnstile on Blvd Garita de Otay which creates a barrier to northbound pedestrian traffic crossing the vehicle SENTRI lane to access pedestrian processing.
<b>Project 23</b>	<b>Mesa de Otay Pedestrian Pathway Enhancements (\$1,929,000)</b>
Blvd de las Bellas Artes to pedestrian processing	Add restrooms, water fountains, benches, information kiosks, informational and directional signage, lane segmentation, lighting, and shade for pathways and transit areas. Add additional shade for queuing area. Add pedestrian-friendly crossing just south of southbound border crossing.
<b>Project 24</b>	<b>Boulevard Garita de Otay Sidewalk Improvements (Cost: \$145,000)</b>
Blvd Garita de Otay from Blvd de las Bellas Artes to pedestrian processing	Construct pedestrian sidewalk ramps and missing sidewalk and crosswalks.
<b>Project 25</b>	<b>Boulevard de las Bellas Artes Crosswalk Improvements (\$7,000)</b>
Intersection of Blvd de las Bellas Artes and Calle Garita de Otay SENTRI	Enhance pedestrian crosswalk visibility, accessibility, and safety where the sidewalk on the east side of Boulevard Aztecas N intersects with Calle Garita de Otay SENTRI.
Mexico	Bicycle Project Recommendations
<b>Project 26</b>	<b>Mesa de Otay Bicycle Border Crossing (\$300,000)</b>
POE	Create northbound and southbound bicycle-only inspection lanes with appropriate amenities. Appropriate amenities depend on whether lanes are designed for mounted bicyclists or bicyclists who are dismounted and crossing as pedestrians.
<b>Project 27</b>	<b>Bicycle Routes in Mesa de Otay , Tijuana (\$60,000)</b>
Various	Construct bicycle routes in Mesa de Otay, Tijuana and install bicycle-related signage.
<b>Project 28</b>	<b>Bicycle Parking in Mesa de Otay, Tijuana (\$7,000)</b>
Within a three minute walk of the pedestrian queue	Construct bicycle parking at the POE. Consider secure parking and storage where possible.



# IMPERIAL COUNTY TRANSPORTATION COMMISSION

PEDESTRIAN AND BICYCLE TRANSPORTATION ACCESS STUDY OF THE  
CALIFORNIA/BAJA CALIFORNIA LAND PORTS OF ENTRY

Mexico		Transit Project Recommendations
<b>Project 29</b>		<b>Colina del Sol Pick-Up/Drop-Off Zone and Transit Stop (\$385,000)</b>
Colina del Sol, west of intersection of Sor Juana Inés de la Cruz and Josefina Rendón Parra		Create a passenger pick-up/drop-off zone and transit facility near the northbound pedestrian queuing area. Include shade, lighting, benches, and informational and directional signage.
Mexico		Vehicle Project Recommendations
<b>Project 30</b>		<b>Blvd Garita de Otoy Traffic Control (\$9,000)</b>
Blvd Garita de Otoy		Add traffic control to prevent wrong-way driving due to passenger drop-off on Blvd Garita de Otoy SENTRI lane.
United States		Pedestrian Project Recommendations
<b>Project 31</b>		<b>Pedestrian Bridge – Northbound Ramp (\$780,000)</b>
Pedestrian bridge to pedestrian path south of Nicola Tesla Ct		In the absence of new pedestrian bridge projects, add northbound pedestrian ramp to existing pedestrian bridge.
<b>Project 32</b>		<b>Paseo de la Amistad Pedestrian and Bike International Border Crossing (\$2,060,000)</b>
Various locations		Improve Paseo Internacional with new, expanded sidewalk and bicycle lane, widen sidewalk and improve existing pick-up/drop-off point at Via de la Amistad, and add pedestrian amenities. Construct a transit center west of SR 905 and improve Nicola Tesla Ct cul de sac. Construct a pedestrian bridge for north-south pedestrian traffic along west side of SR 905. This is a TEA project that remains viable if TEA program or other funding becomes available.
<b>Project 33</b>		<b>Paseo Internacional Sidewalk Improvements and Sidewalk Construction (\$30,000)</b>
Pedestrian processing to Roll Drive		Add pedestrian crossing north of POE. In the absence of Paseo de la Amistad Pedestrian and Bike International Border Crossing project, also construct sidewalk on east side of Paseo Internacional and add pedestrian ramps on west side of Paseo Internacional.
<b>Project 34</b>		<b>Otoy Mesa Pedestrian Pathway Enhancements (\$542,000)</b>
Pedestrian processing to Roll Drive, pedestrian processing to Nicola Tesla Ct		Add water fountains, restroom, benches, information kiosk, informational and directional signage, and lighting. Add additional shade for pathways, queuing area, waiting areas, and transit areas. Add shelters, additional benches, and lighting for bus stops.
United States		Bicycle Project Recommendations
<b>Project 35</b>		<b>Otoy Mesa Bicycle Border Crossing (\$300,000)</b>
POE		Create northbound and southbound bicycle-only inspection lanes with appropriate amenities. Appropriate amenities depend on whether lanes are designed for mounted bicyclists or bicyclists who are dismounted and crossing as pedestrians.
<b>Project 36</b>		<b>Bicycle Routes in Otoy Mesa (\$242,000)</b>
Various		Construct planned bicycle routes in Otoy Mesa. Additionally, construct routes to establish connections between planned routes and the POE. Install bicycle-related signage. Lead Agency: City of San Diego, GSA Cost:

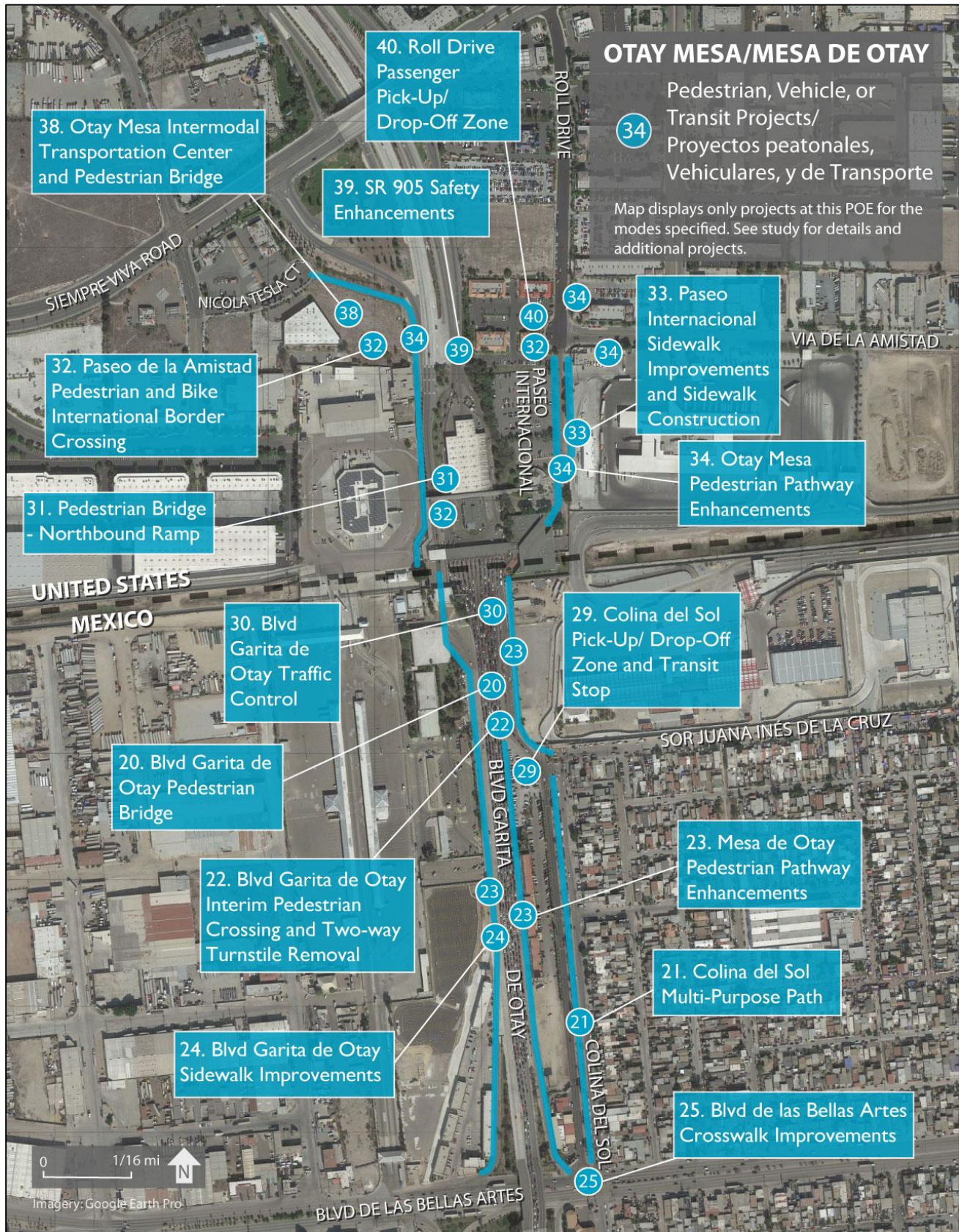


## IMPERIAL COUNTY TRANSPORTATION COMMISSION

PEDESTRIAN AND BICYCLE TRANSPORTATION ACCESS STUDY OF THE  
CALIFORNIA/BAJA CALIFORNIA LAND PORTS OF ENTRY

<b>Project 37</b>	<b>Bicycle Parking in Otay Mesa (\$7,000)</b>
Within a three minute walk of the pedestrian queue	Construct bicycle parking at the POE. Consider secure parking and storage where possible
<b>United States</b>	<b>Transit Project Recommendations</b>
<b>Project 38</b>	<b>Otay Mesa Intermodal Transportation Center and Pedestrian Bridge (\$7,600,000)</b>
Parcel southeast of Nicola Tesla Ct	Construct planned ITC south of Nicola Tesla Ct. Construct planned pedestrian bridge from northbound pedestrian inspections.
<b>United States</b>	<b>Vehicle Project Recommendations</b>
<b>Project 39</b>	<b>SR 905 Safety Enhancements (\$8,000)</b>
SR 905 north of vehicle processing facility	Add safety enhancements on SR 905 to prevent passenger drop-off.
<b>Project 40</b>	<b>Roll Drive Passenger Pick-Up/Drop-Off Zone (\$42,000)</b>
Intersection of Roll Drive and Via de la Amistad	In the absence of Via de la Amistad pick-up/drop-off improvements identified in Paseo de la Amistad Pedestrian and Bike International Border Crossing project, re-paint curb to create official and sufficient passenger pick-up/drop-off zone at southwestern edge of Roll Drive. Add trees, benches, lighting, and directional signage.

**Figure I.3 Otay Mesa/Mesa de Otay Pedestrian, Transit, and Vehicle Projects**

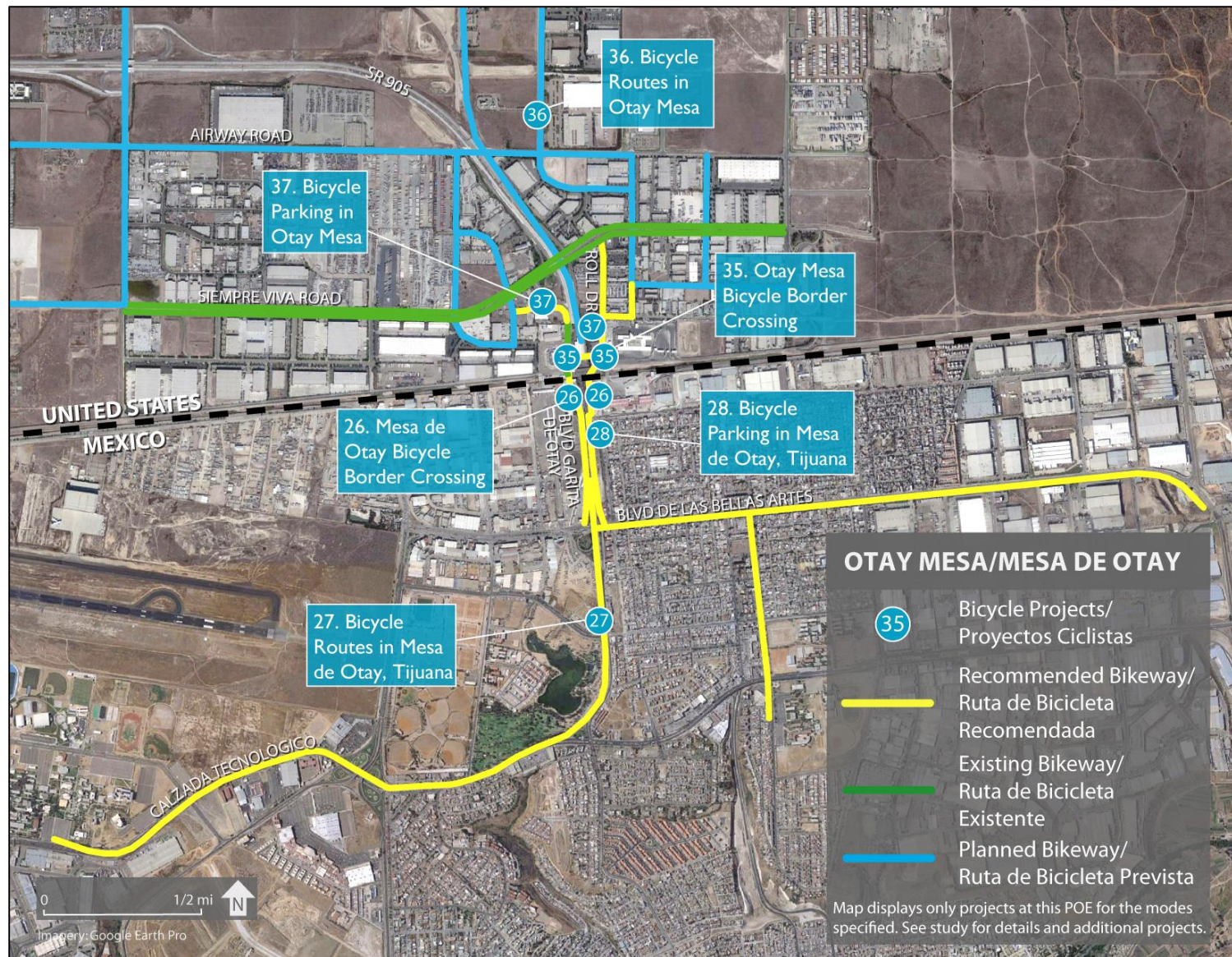




# IMPERIAL COUNTY TRANSPORTATION COMMISSION

## PEDESTRIAN AND BICYCLE TRANSPORTATION ACCESS STUDY OF THE CALIFORNIA/BAJA CALIFORNIA LAND PORTS OF ENTRY

**Figure 1.4 Otay Mesa/Mesa de Otay Bicycle Projects**





# IMPERIAL COUNTY TRANSPORTATION COMMISSION

PEDESTRIAN AND BICYCLE TRANSPORTATION ACCESS STUDY OF THE  
CALIFORNIA/BAJA CALIFORNIA LAND PORTS OF ENTRY

## TECATE/TECATE POE

Mexico	Pedestrian Project Recommendations
<b>Project 41</b>	<b>Tecate, Baja California Pedestrian Pathway Enhancements and Passenger Pick-Up/Drop-Off Zone (\$199,000)</b>
Intersection of Callejón Francisco I Madero and Presidente Lázaro Cárdenas	Add water fountain, benches, information kiosk, shade for waiting area, and informational signage. Add additional lighting and directional signage. Create a protected passenger pick-up/drop-off zone at the intersection of Callejón Francisco I Madero and Presidente Lázaro Cárdenas.
<b>Project 42</b>	<b>Tecate, Baja California Sidewalk and Wayfinding Improvements (\$145,000)</b>
POE to Av Hidalgo	Construct additional pedestrian sidewalk ramps and crosswalks, install signage, and rehabilitate sidewalk one block east and west of pedestrian processing as well as along Presidente Lázaro Cardenas and along one block of Av Hidalgo.
Mexico	Bicycle Project Recommendations
<b>Project 43</b>	<b>Tecate, Baja California Bicycle Border Crossing (\$300,000)</b>
POE	Create northbound and southbound bicycle-only inspection lanes with appropriate amenities. Appropriate amenities depend on whether lanes are designed for mounted bicyclists or bicyclists who are dismounted and crossing as pedestrians.
<b>Project 44</b>	<b>Bicycle Routes in Tecate, Baja California (\$213,000)</b>
Various	Construct bicycle routes in Tecate, Baja California and install bicycle-related signage.
<b>Project 45</b>	<b>Bicycle Parking in Tecate, Baja California (\$7,000)</b>
Within a three minute walk of the pedestrian queue	Construct bicycle parking at the POE. Consider secure parking and storage where appropriate.
United States	Pedestrian Project Recommendations
<b>Project 46</b>	<b>SR 188 Pedestrian-Friendly Crossing Improvement (\$110,000)</b>
SR 188 at Thing Rd	In the absence of Kumeyaay Crossing at Tecate International Border Crossing, create north-south pedestrian-friendly crossing across SR 188 at intersection of Thing Road.
<b>Project 47</b>	<b>Kumeyaay Crossing at Tecate International Border Crossing (\$2,382,000)</b>
SR 188 extending from POE to approximately 1100' north	Replace and widen sidewalk on west side of SR 188 including additional space for pedestrian pathway amenities and signage. Add bike lane. Add pedestrian crosswalks on and across SR 188. This is a TEA project that remains viable if TEA program or other funding becomes available.
<b>Project 48</b>	<b>Tecate, California Pedestrian Pathway Enhancements (\$326,000)</b>
Border to MTS bus stop on SR 188	Add restrooms, water fountain, informational kiosks, benches, lighting, and informational and directional signage. Add additional benches behind bus stop and bus shelter. Add additional shade for southbound queuing area.
United States	Bicycle Project Recommendations
<b>Project 49</b>	<b>Tecate, California Bicycle Border Crossing (\$300,000)</b>
POE	Create northbound and southbound bicycle-only inspection lanes with appropriate amenities. Appropriate amenities depend on whether lanes are designed for mounted bicyclists or bicyclists who are dismounted and crossing as pedestrians.

## IMPERIAL COUNTY TRANSPORTATION COMMISSION

PEDESTRIAN AND BICYCLE TRANSPORTATION ACCESS STUDY OF THE  
CALIFORNIA/BAJA CALIFORNIA LAND PORTS OF ENTRY

<b>Project 50</b>	<b>Bicycle Routes in Tecate, California (\$23,000)</b>
Various	Construct bicycle routes in Tecate, California and install bicycle-related signage.
<b>Project 51</b>	<b>Bicycle Parking in Tecate, California (\$7,000)</b>
Within a three minute walk of the pedestrian queue	Construct bicycle parking at the POE. Consider secure parking and storage where possible.
<b>United States</b>	<b>Transit Project Recommendations</b>
<b>Project 52</b>	<b>Increase Route 894 Frequency</b>
-	Increase frequency of Route 894 with service to and from Tecate.
<b>United States</b>	<b>Vehicle Project Recommendations</b>
<b>Project 53</b>	<b>Tecate, California Passenger Pick-Up/Drop-Off Zone (\$47,000)</b>
SR 188	Create a passenger pick-up/drop-off zone outside of CBP pedestrian processing facility. Add bench, shade, lighting, and signage.



# IMPERIAL COUNTY TRANSPORTATION COMMISSION

## PEDESTRIAN AND BICYCLE TRANSPORTATION ACCESS STUDY OF THE CALIFORNIA/BAJA CALIFORNIA LAND PORTS OF ENTRY

**Figure I.5 Tecate/Tecate Pedestrian, Transit, and Vehicle Projects**

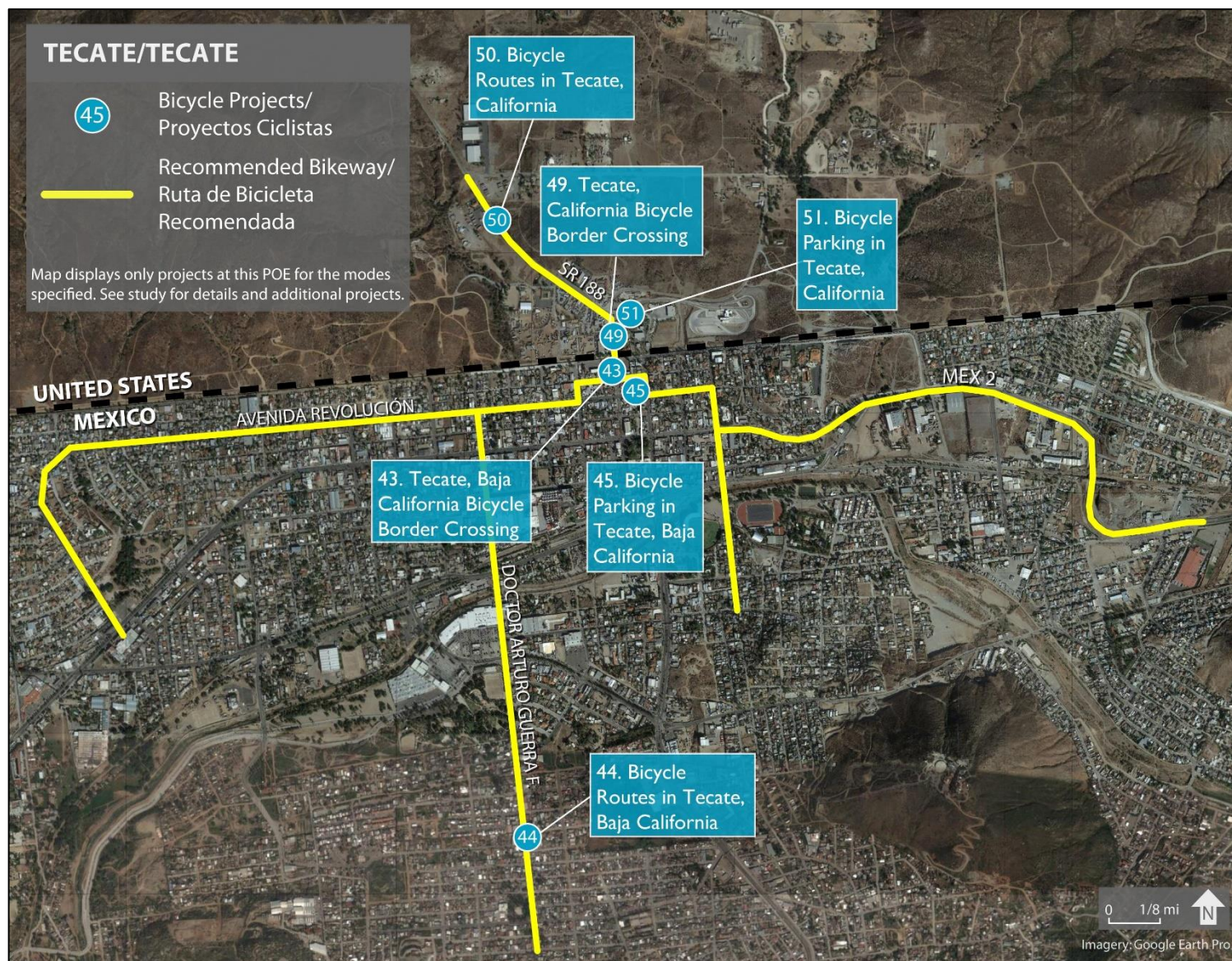




# IMPERIAL COUNTY TRANSPORTATION COMMISSION

## PEDESTRIAN AND BICYCLE TRANSPORTATION ACCESS STUDY OF THE CALIFORNIA/BAJA CALIFORNIA LAND PORTS OF ENTRY

Figure I.6 Tecate/Tecate Bicycle Projects



# IMPERIAL COUNTY TRANSPORTATION COMMISSION

PEDESTRIAN AND BICYCLE TRANSPORTATION ACCESS STUDY OF THE  
CALIFORNIA/BAJA CALIFORNIA LAND PORTS OF ENTRY

## CALEXICO WEST/MEXICALI I POE

Mexico	Pedestrian Project Recommendations
<b>Project 54</b>	<b>Mexicali I Tunnel Modification (\$123,000)</b>
Pedestrian tunnel	As an interim improvement, resolve flooding issues and improve ventilation in pedestrian tunnel.
<b>Project 55</b>	<b>Mexicali I Pedestrian Pathway Enhancements (\$112,000)</b>
Agustin Melgar to POE and Callejón Zorilla to POE	As interim improvements, add water fountain, information kiosk, and informational signage. Add additional benches, shade for queuing area and waiting area, lighting, and directional signage. Add benches, shade, signage, and lighting for transit stop.
<b>Project 56</b>	<b>Mexicali Pedestrian-Friendly Crossing Improvements, Sidewalk Improvements, and Sidewalk Maintenance (\$725,000)</b>
Various intersections	Add pedestrian-friendly crossing at intersections of Blvd Adolfo López Mateos with Av Francisco I Madero and Ignacio Manuel Altamirano. Add pedestrian sidewalk ramps and crosswalks and conduct sidewalk maintenance on Augustin Melgar, Zorilla, Blvd Adolfo López Mateos, Ignacio Manuel Altamirano, and Av Francisco I Madero.
Mexico	Bicycle Project Recommendations
<b>Project 57</b>	<b>Mexicali I Bicycle Border Crossing (\$300,000)</b>
POE	Create northbound and southbound bicycle-only inspection lanes with appropriate amenities. Appropriate amenities depend on whether lanes are designed for mounted bicyclists or bicyclists who are dismounted and crossing as pedestrians.
<b>Project 58</b>	<b>Bicycle Routes in Mexicali (\$480,000)</b>
Various	Construct planned bicycle routes in Mexicali; consider implementation of some facilities as bicycle lanes. Additionally, construct routes to establish connections between planned routes and the POE. Install bicycle-related signage.
<b>Project 59</b>	<b>Bicycle Ramp for Mexicali I Tunnel (\$38,000)</b>
Pedestrian tunnel	As an interim improvement, construct bicycle ramp alongside western stairway to facilitate bicycle users entering and exiting pedestrian tunnel.
<b>Project 60</b>	<b>Bicycle Parking in Mexicali (\$7,000)</b>
Within a three minute walk of the pedestrian queue	Construct bicycle parking at or near the POE. Consider secure parking and storage where possible.
Mexico	Transit Project Recommendations
<b>Project 61</b>	<b>Mexicali I Mobility Hub (\$750,000 Bike Share only)</b>
Within a three minute walk of the pedestrian queue	Construct a mobility hub near the POE. Bicycle share is recommended; other appropriate services at this location dependent on further study.
Mexico	Vehicle Project Recommendations
<b>Project 62</b>	<b>Passenger Pick-Up/Drop-Off Zone on Callejón Zorilla (\$101,000)</b>
Callejón Zorilla north of Callejón Reforma	As an interim improvement, use paint and signage to add a passenger pick-up/drop-off zone on Callejón Zorilla.



# IMPERIAL COUNTY TRANSPORTATION COMMISSION

PEDESTRIAN AND BICYCLE TRANSPORTATION ACCESS STUDY OF THE  
CALIFORNIA/BAJA CALIFORNIA LAND PORTS OF ENTRY

United States	Pedestrian Project Recommendations
<b>Project 63</b>	<b>Calexico Border Gateway and 1st Street Promenade (\$4,184,000)</b>
E 1st Street between SR 111 and Heber Ave	Widen sidewalks and add pedestrian amenities on E 1st Street. Improve traffic flow on adjacent streets and add pick-up/drop-off area. This is a TEA project that remains viable if TEA program or other funding becomes available.
<b>Project 64</b>	<b>Calexico Pedestrian Pathway Enhancements (\$114,000)</b>
POE to E 1st Street	As interim improvements, add water fountain, benches, information kiosk, informational and directional signage, and shade for waiting area. Add additional lighting. Add signage and lighting for transit areas.
<b>Project 65</b>	<b>Calexico Pedestrian-Friendly Crossing Improvements and Crosswalk Maintenance (\$178,000)</b>
Various intersections between E 1st Street and E 7th Street	Construct pedestrian-friendly crossings at intersections of E 1st Street and Rockwood Ave and E 2nd Street and Rockwood Ave. Repaint crosswalks on Paulin Ave, Rockwood Ave, Heffernan Ave, and Heber Ave.
United States	Bicycle Project Recommendations
<b>Project 66</b>	<b>Calexico West Bicycle Border Crossing (\$300,000)</b>
POE	Create northbound and southbound bicycle-only inspection lanes with appropriate amenities. Appropriate amenities depend on whether lanes are designed for mounted bicyclists or bicyclists who are dismounted and crossing as pedestrians.
<b>Project 67</b>	<b>Bicycle Routes in Calexico (\$480,000)</b>
Various	Construct planned bicycle routes in Calexico, including New River Parkway project. Additionally, construct routes to establish connections between planned routes and the POE. Install bicycle-related signage.
<b>Project 68</b>	<b>Bicycle Parking in Calexico (\$7,000)</b>
Within a three minute walk of the pedestrian queue	Construct bicycle parking at the POE. Consider secure parking and storage where possible.
United States	Transit Project Recommendations
<b>Project 69</b>	<b>Calexico Intermodal Transportation Center (\$10,000,000)</b>
E 3rd St between Rockwood and Heffernan Avenues	Construct an ITC in Calexico near the POE.
<b>Project 70</b>	<b>Calexico West Mobility Hub (\$750,000 Bike Share only)</b>
Within a three minute walk of the pedestrian queue	Construct a mobility hub near the POE. Bicycle share is recommended; other appropriate services at this location dependent on further study.



**Figure I.7 Calexico West/Mexicali I Pedestrian, Transit, and Vehicle Projects**





# IMPERIAL COUNTY TRANSPORTATION COMMISSION

## PEDESTRIAN AND BICYCLE TRANSPORTATION ACCESS STUDY OF THE CALIFORNIA/BAJA CALIFORNIA LAND PORTS OF ENTRY

Figure 1.8 Calexico West/Mexicali I Bicycle Projects



# IMPERIAL COUNTY TRANSPORTATION COMMISSION

PEDESTRIAN AND BICYCLE TRANSPORTATION ACCESS STUDY OF THE  
CALIFORNIA/BAJA CALIFORNIA LAND PORTS OF ENTRY

## CALEXICO EAST/MEXICALI II POE

Mexico		Pedestrian Project Recommendations
<b>Project 71</b>		<b>Mexicali II Pedestrian Pathway Enhancements (\$1,097,000)</b>
Calzada Abelardo L. Rodríguez to pedestrian processing		Add water fountains, benches, information kiosks, lighting, and informational and directional signage. Add shade for queuing areas, waiting area, and pathways. Add additional restroom, crosswalks, and pedestrian sidewalk ramps. Add more shade for departure pathway. If new northerly pick-up/drop-off zone is not constructed, improve existing passenger pick-up/drop-off zone with shade structure, benches, and information kiosk.
<b>Project 72</b>		<b>Calzada Abelardo L. Rodríguez Sidewalk Improvements (\$58,000)</b>
Intersection of Calzada Abelardo L. Rodríguez and POE access roads		Add pedestrian sidewalk ramps and sidewalk and crosswalks connecting northbound and southbound pedestrian pathways along north side of Calzada Abelardo L. Rodríguez.
Mexico		Bicycle Project Recommendations
<b>Project 73</b>		<b>Mexicali II Bicycle Border Crossing (\$300,000)</b>
POE		Create northbound and southbound bicycle-only inspection lanes with appropriate amenities. Appropriate amenities depend on whether lanes are designed for mounted bicyclists or bicyclists who are dismounted and crossing as pedestrians.
<b>Project 74</b>		<b>Bicycle Routes in Mexicali (\$375,000)</b>
Various		Construct planned bicycle routes in Mexicali. Additionally, construct routes to establish connections between planned routes and the POE. Install bicycle-related signage.
<b>Project 75</b>		<b>Bicycle Parking in Mexicali (\$7,000)</b>
Within a three minute walk of the pedestrian queue		Construct bicycle parking at the POE. Consider secure parking and storage where possible.
Mexico		Vehicle Project Recommendations
<b>Project 76</b>		<b>Mexicali II Passenger Pick-Up/Drop-Off Zone (\$580,000)</b>
South of bridge that crosses All-American Canal		Create passenger pick-up/drop-off zone approximately 800' north of current location to reduce pedestrian walking distance to border crossing. Include lighting and informational and directional signage.
<b>Project 77</b>		<b>Overnight Parking on Calzada Abelardo L. Rodríguez (\$287,000)</b>
Calzada Abelardo L. Rodríguez southeast of POE		Create one overnight parking lot on Calzada Abelardo L. Rodríguez southeast of POE.
United States		Pedestrian Project Recommendations
<b>Project 78</b>		<b>Calexico East Pedestrian Path (\$44,000)</b>
Pedestrian processing building to 900' north		Add pedestrian path on west side of roadway, adjacent to existing trees. Or, add trees to provide shade to existing sidewalk.
<b>Project 79</b>		<b>Calexico East Pedestrian Pathway Enhancements (\$1,072,000)</b>
Border to SR 7		Add restroom, water fountains, information kiosks, lighting, benches, and informational and directional signage. Add shade and benches for waiting area. Add shade to waiting area, queuing area, and southbound pathway. Create pedestrian-friendly crossing just north of pedestrian processing facility.



## IMPERIAL COUNTY TRANSPORTATION COMMISSION

PEDESTRIAN AND BICYCLE TRANSPORTATION ACCESS STUDY OF THE  
CALIFORNIA/BAJA CALIFORNIA LAND PORTS OF ENTRY

United States		Bicycle Project Recommendations
<b>Project 80</b>		<b>Calexico East Bicycle Border Crossing (\$300,000)</b>
POE		Create northbound and southbound bicycle-only inspection lanes with appropriate amenities. Appropriate amenities depend on whether lanes are designed for mounted bicyclists or bicyclists who are dismounted and crossing as pedestrians.
<b>Project 81</b>		<b>Bicycle Routes in Imperial County (\$163,000)</b>
Various		Construct bicycle routes in Imperial County and install bicycle-related signage.
<b>Project 82</b>		<b>Bicycle Parking in Imperial County (\$7,000)</b>
Within a three minute walk of the pedestrian queue		Construct bicycle parking at the POE. Consider secure parking and storage where possible.
United States		Transit Project Recommendations
<b>Project 83</b>		<b>Calexico East ITC and Relocation of Southbound Pedestrian Pathway Access (\$5,000,000)</b>
Potentially at parcel located at split of SR 7 northbound and southbound vehicle lanes, or other location as appropriate		Create an ITC and include shade, lighting, benches, and restroom. Add pedestrian-friendly crossings across northbound and southbound SR 7 to connect northbound and southbound pedestrian pathways adjacent to the ITC. Consider providing connections to other transit routes within Imperial County.
United States		Vehicle Project Recommendations
<b>Project 84</b>		<b>Calexico East Passenger Pick-Up/Drop-Off Zone (\$125,000)</b>
Southern terminus of Menvielle Rd		As an interim improvement, create a passenger pick-up/drop-off zone at the southern terminus of Menvielle Rd. Add benches, signage, a shade structure, and a sidewalk to connect to the northbound pedestrian pathway.
<b>Project 85</b>		<b>Relocate Calexico East SENTRI Lane (N/A)</b>
POE		Assign vehicle lane closest to POE (eastern-most northbound lane) as SENTRI lane and create SENTRI pedestrian drop off on curb adjacent to northbound pedestrian entrance to POE. This project is contingent on the expansion plans for this POE as it cannot be completed with existing passenger lane configuration.

**Figure I.9 Calexico East/Mexicali II Pedestrian, Transit, and Vehicle Projects**

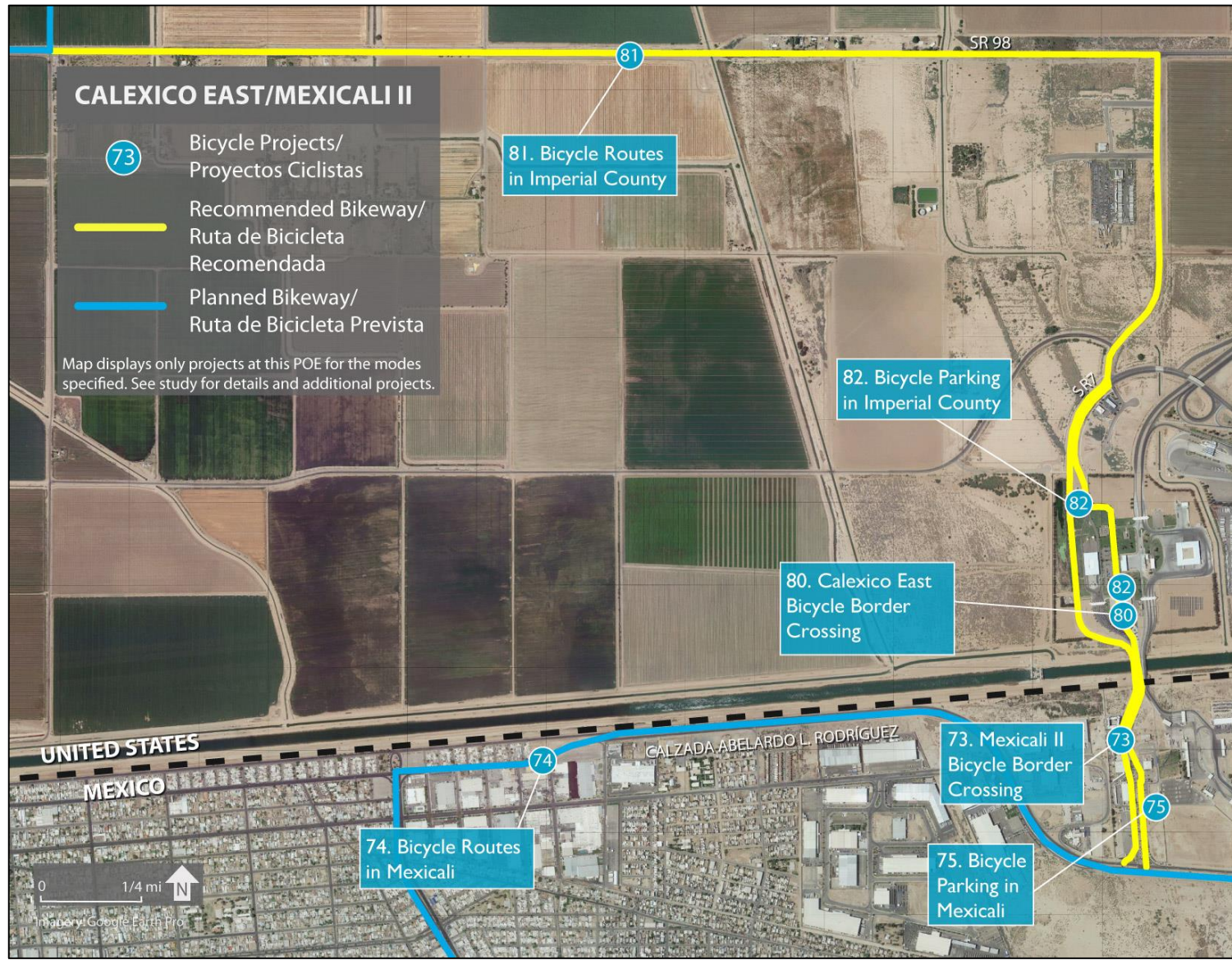




# IMPERIAL COUNTY TRANSPORTATION COMMISSION

## PEDESTRIAN AND BICYCLE TRANSPORTATION ACCESS STUDY OF THE CALIFORNIA/BAJA CALIFORNIA LAND PORTS OF ENTRY

**Figure I.10 Calexico East/Mexicali II Bicycle Projects**



# IMPERIAL COUNTY TRANSPORTATION COMMISSION

PEDESTRIAN AND BICYCLE TRANSPORTATION ACCESS STUDY OF THE  
CALIFORNIA/BAJA CALIFORNIA LAND PORTS OF ENTRY

## ANDRADE/LOS ALGODONES POE

Mexico	Pedestrian Project Recommendations
<b>Project 86</b>	<b>Los Algodones Pedestrian Pathway Enhancements (\$60,000)</b>
Saratoga, from east of canal to pedestrian processing	Add water fountains, information kiosk, and shade for waiting area. Widen pedestrian sidewalk ramps. Add additional pedestrian sidewalk ramps, benches, shade for northbound queuing area, and informational and directional signage.
<b>Project 87</b>	<b>Los Algodones Sidewalk Improvements (\$81,000)</b>
Border to 16 de Septiembre	Rehabilitate crosswalks and sidewalk and add pedestrian sidewalk ramp along Calle 2, 5 de Mayo, and 16 de Septiembre.
Mexico	Bicycle Project Recommendations
<b>Project 88</b>	<b>Bicycle Routes in Los Algodones (\$95,000)</b>
Various	Construct bicycle routes in Los Algodones and install bicycle-related signage.
<b>Project 89</b>	<b>Los Algodones Bicycle Border Crossing (\$300,000)</b>
POE	Create northbound and southbound bicycle-only inspection lanes with appropriate amenities. Appropriate amenities depend on whether lanes are designed for mounted bicyclists or bicyclists who are dismounted and crossing as pedestrians.
<b>Project 90</b>	<b>Bicycle Parking in Los Algodones (\$7,000)</b>
Within a three minute walk of the pedestrian queue	Construct bicycle parking at the POE. Consider secure parking and storage
United States	Pedestrian Project Recommendations
<b>Project 91</b>	<b>Andrade Pedestrian Pathway Enhancements (\$594,000)</b>
Border to SR 186 just north of northbound pedestrian exit	Add waiting area with benches, shade, and information kiosk on eastern side of SR 186. Add informational signage, water fountain, and restroom. Add information kiosk and shade and bench for southbound queuing area.
United States	Bicycle Project Recommendations
<b>Project 92</b>	<b>Bicycle Route and Signage in Andrade (\$458,000)</b>
Various	Install bicycle wayfinding signage and construct bicycle route in Andrade providing connection to Arizona.
<b>Project 93</b>	<b>Andrade Bicycle Border Crossing (\$300,000)</b>
POE	Create northbound and southbound bicycle-only inspection lanes with appropriate amenities. Appropriate amenities depend on whether lanes are designed for mounted bicyclists or bicyclists who are dismounted and crossing as pedestrians.
<b>Project 94</b>	<b>Bicycle Parking in Andrade (\$7,000)</b>
Within a three minute walk of the pedestrian queue	Construct bicycle parking at the POE. Consider secure parking and storage where possible.



## IMPERIAL COUNTY TRANSPORTATION COMMISSION

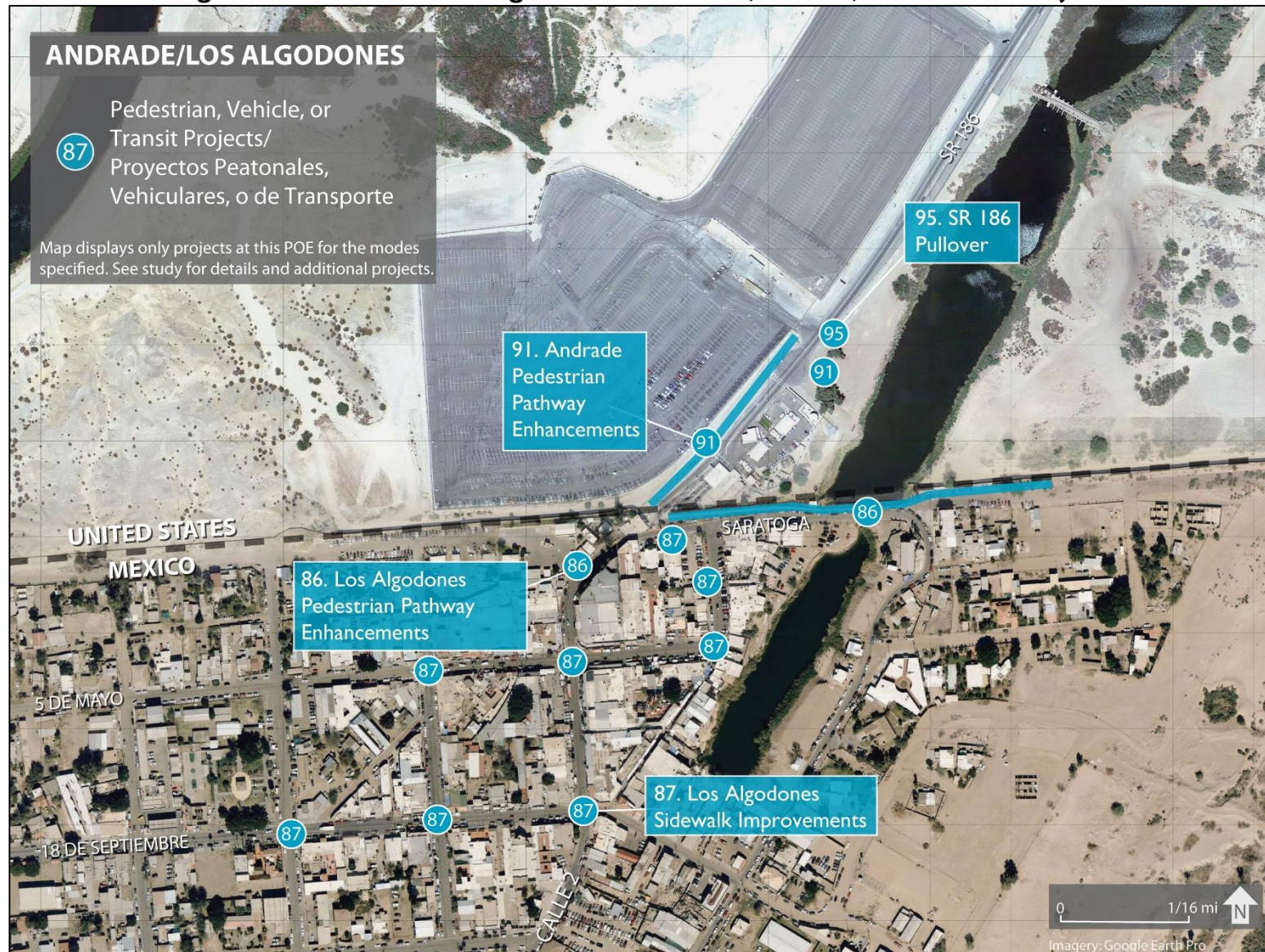
PEDESTRIAN AND BICYCLE TRANSPORTATION ACCESS STUDY OF THE  
CALIFORNIA/BAJA CALIFORNIA LAND PORTS OF ENTRY

United States	Vehicle Project Recommendations
<b>Project 95</b>	<b>SR 186 Pullover (\$188,000)</b>
SR 186 north of northbound pedestrian exit	Create shoulder on SR 186 for passenger pick-up and drop-off.

# IMPERIAL COUNTY TRANSPORTATION COMMISSION

## PEDESTRIAN AND BICYCLE TRANSPORTATION ACCESS STUDY OF THE CALIFORNIA/BAJA CALIFORNIA LAND PORTS OF ENTRY

**Figure I.11 Andrade/Los Algodones Pedestrian, Transit, and Vehicle Projects**





**Figure I.12 Andrade/Los Algodones Bicycle Projects**



## POLICY RECOMMENDATIONS

<b>Project 96</b>	<b>Increase SENTRI Access for Bicyclists and Pedestrians</b>
	Increase education about SENTRI and Ready Lanes and create a less costly pedestrian and bicycle-only SENTRI program.
<b>Project 97</b>	<b>Design Guidelines</b>
	Institute or update design guidelines for POEs to guide future construction and modification of border crossings to promote pedestrian-friendly and bicycle-friendly infrastructure. See design guidelines appendix for recommendations.
<b>Project 98</b>	<b>Operable Bicycles in Bicycle Border Crossing Lanes</b>
	A bicycle must be ridden to the crossing in order for the bicyclist to cross in the bicycle border crossing lane. If bicycle is not operable, the individual will have to cross the border through pedestrian inspection.
<b>Project 99</b>	<b>Landscaping and Public Art</b>
	Add landscaping and public art to all border crossings.
<b>Project 100</b>	<b>Thirty Minute Wait Times</b>
	Strive for maximum 30 minute wait times at all ports up to primary inspection facility, with expedited service for the elderly and disabled.
<b>Project 101</b>	<b>Senior/Disability Lanes</b>
	Study feasibility of instituting pedestrian crossing lanes for senior citizens and the disabled at existing and future ports.
<b>Project 102</b>	<b>Maintenance Districts</b>
	Explore the creation of Maintenance Commitments executed through a Memorandum of Understanding that prioritizes maintenance of influence areas around all POEs.



**Appendix A**  
**FULL PROJECT MATRIX**

Pedestrian and Bicycle Transportation Access Study Project Recommendations <sup>1</sup>												
Project Number	Port of Entry (POE)	Country	Jurisdiction	Type	Project Name	Limits	Project Description	Agency Stakeholder	Cost (\$1,000) <sup>2</sup>	Related Plans and Programs <sup>3</sup>	Source of Recommendation	Short-Term or Long-Term <sup>4</sup>
San Ysidro/Puerta México-El Chaparral												
1	San Ysidro/Puerta México - El Chaparral	Mexico	Tijuana	Pedestrian	Tijuana Pedestrian-Friendly Crossing Improvements	Various intersections	Create pedestrian-friendly crossings at intersections of Av Frontera and Av Ferrocarril, Alfonso Reyes and Línea Internacional, and northbound ramp gore at Paseo Centenario Tijuana connecting to Av Ferrocarril.	SIDUE, Ayuntamiento de Tijuana	\$218	Intersection of Av Frontera and Av Ferrocarril assumed to be included in BMP Project No. 3070003, Tijuana Intermodal Transit Center. Paseo Centenario ramp gore assumed to be included in BMP Project No. 2070008, Modernize México Bridge.	Public outreach, Field work	S
2	San Ysidro/Puerta México - El Chaparral	Mexico	Tijuana	Pedestrian	Puerta México-El Chaparral Pedestrian Pathway Enhancements	Pedestrian processing to Av de la Amistad and Av Frontera	Add restrooms, water fountains, benches, shade for pathways and waiting areas, information kiosks, and informational signage. Add additional directional signage, lighting, shade for queuing area, pedestrian sidewalk ramps, and lane segmentation. Consider widening queue area. As an interim improvement, add additional lighting, shelter, and seating for transit stop.	SIDUE, Ayuntamiento de Tijuana	\$982	Transit stop will be replaced in BMP Project No. 3070003, Tijuana Intermodal Transit Center.	Public outreach, Agency representatives, Field work	L
3	San Ysidro/Puerta México - El Chaparral	Mexico	Tijuana	Pedestrian	Tijuana Pedestrian-Friendly Sidewalk Improvements	Av de la Amistad, Paseo Centenario Tijuana, and Línea Internacional	Sidewalk rehabilitation and installation of pedestrian ramps, crosswalks, signage, and lighting along Av de la Amistad, Paseo Centenario Tijuana, and Línea Internacional.	SIDUE	\$268		Public outreach, Field work	S
4	San Ysidro/Puerta México - El Chaparral	Mexico	Tijuana	Bicycle	Puerta México - El Chaparral Bicycle Border Crossing	POE	Create northbound and southbound bicycle-only inspection lanes with appropriate amenities. Appropriate amenities depend on whether lanes are designed for mounted bicyclists or bicyclists who are dismounted and crossing as pedestrians.	INDAABIN, Aduanas	\$300		Public outreach, Agency Representatives	L
5	San Ysidro/Puerta México - El Chaparral	Mexico	Tijuana	Bicycle	Bicycle Routes in Tijuana	Various	Construct planned bicycle routes in Tijuana. Additionally, construct routes to establish connections between planned routes and the POE. Install bicycle-related signage.	SIDUE, Ayuntamiento de Tijuana	\$584	Planned routes described in IMPLAN documents "Movilidad Integral" and "Ciclovía Benítez" and include BMP Project No. 5040003, Río Nuevo Bike Lane Phase 1.	Public outreach, Agency Representatives, Existing Plan	S
6	San Ysidro/Puerta México - El Chaparral	Mexico	Tijuana	Bicycle	Bicycle Parking in Tijuana	Within a three minute walk of the pedestrian queue	Construct bicycle parking at the Puerta México Este and El Chaparral POE. Consider secure parking and storage where possible.	IMPLAN, SIDUE	\$7		Field work	S
7	San Ysidro/Puerta México - El Chaparral	Mexico	Tijuana	Transit	Tijuana Intermodal Transit Center	Colonia Cuauhtémoc area	Build an ITC and a commercial development connected as a comprehensive project. Provide service for pedestrians, buses, and taxis at the ITC. Commercial building planned to have a hotel and shopping area in a separate building.	SIDUE	\$50,000	BMP Project Number 3070003, Tijuana Intermodal Transit Center.	Agency representatives, Border Master Plan	L
8	San Ysidro/Puerta México - El Chaparral	Mexico	Tijuana	Transit	Puerta México-El Chaparral Mobility Hub	Within a three minute walk of the pedestrian queue	Construct a mobility hub near the POE. Mobility hubs offer a variety of mobility services at one location such as shared vehicles and bicycles, bicycle parking, and shuttle and jitney services. Bicycle share is recommended; other appropriate services at this location dependent on further study.	Ayuntamiento de Tijuana	\$750 (Bike share only)		Agency representatives	S
9	San Ysidro/Puerta México - El Chaparral	Mexico	Tijuana	Vehicle	Puerta México Passenger Pick-Up/Drop-Off Zone	Within a three minute walk of the pedestrian queue	In the absence of the Tijuana Intermodal Transit Center project, create sufficient and exclusive pick up/drop off zones at an appropriate location at the Puerta México POE. Include benches, signage, shade, and lighting.	SIDUE, Ayuntamiento de Tijuana	\$107	Puerta México pick-up/drop-off zone assumed to be included in BMP Project No. 3070003, Tijuana Intermodal Transit Center.	Public outreach, Agency representatives, Field work	S
10	San Ysidro/Puerta México - El Chaparral	Mexico	Tijuana	Vehicle	Av de la Amistad Roundabout Improvements	Intersection of Av de la Amistad and Av Frontera	Improve Av de la Amistad and Av Frontera roundabout to be more pedestrian-friendly. Additionally, consider installing speed bumps and traffic signals to improve pedestrian safety.	Ayuntamiento de Tijuana	\$1,925		Field work	L
11	San Ysidro/Puerta México - El Chaparral	United States	San Diego	Pedestrian	East San Ysidro Blvd Pedestrian-Friendly Crossing Improvements	East San Ysidro Blvd	Enhance intersection of East San Ysidro Blvd north of San Ysidro Transit Center to be more pedestrian and bicycle-friendly.	City of San Diego	\$141	Also included in BMP Project No.3020032, San Ysidro Intermodal Transportation Center.	Public outreach, Agency representatives, Field work, Existing plan	S
12	San Ysidro/Puerta México - El Chaparral	United States	San Diego	Pedestrian	San Ysidro Pedestrian Pathway Enhancements	Pedestrian processing to East San Ysidro Blvd	Add restrooms, information kiosk, shade for queuing area, and informational signage. Add additional directional signage, benches, lighting, and shade for waiting and transit areas. Improve overall design/view of necessary security features. Improve segments of sidewalk.	GSA, CBP, MTS, City of San Diego	\$1,215	Some items also assumed to be included in BMP Project No.3020032, San Ysidro Intermodal Transportation Center.	Public outreach, Agency representatives, Field work	L
13	San Ysidro/Puerta México - El Chaparral	United States	San Diego	Pedestrian	San Ysidro Sidewalk Improvements	East San Ysidro Blvd, Camino de la Plaza	Add missing pedestrian sidewalk ramps, crosswalks, and sidewalk.	City of San Diego	\$28	Includes BMP Project No. 5020020, West Camino de la Plaza Sidewalk.	Field work, Existing plan	S



# Pedestrian and Bicycle Transportation Access Study Project Recommendations<sup>1</sup>

Project Number	Port of Entry (POE)	Country	Jurisdiction	Type	Project Name	Limits	Project Description	Agency Stakeholder	Cost (\$1,000) <sup>2</sup>	Related Plans and Programs <sup>3</sup>	Source of Recommendation	Short-Term or Long-Term <sup>4</sup>
14	San Ysidro/Puerta México - El Chaparral	United States	San Diego	Bicycle	San Ysidro Bicycle Border Crossing	POE	Create northbound and southbound bicycle-only inspection lanes with appropriate amenities. Appropriate amenities depend on whether lanes are designed for mounted bicyclists or bicyclists who are dismounted and crossing as pedestrians.	GSA, CBP	\$300	BMP No. 502003, Border Bike Lanes.	Public outreach, Agency Representatives, Existing Plan	L
15	San Ysidro/Puerta México - El Chaparral	United States	San Diego	Bicycle	Bicycle Routes in San Ysidro	Various	Construct planned bicycle routes in San Ysidro. Additionally, construct routes to establish connections between planned routes and the POE. Install bicycle-related signage.	City of San Diego, GSA	\$212	Planned routes described in City of San Diego Bicycle Master Plan Update and San Ysidro Community Plan Update, includes BMP Project No. 502006, Border Access Corridor (Preferred Alternative) and BMP Project No. 5020021, West San Ysidro Blvd Bikeway.	Public outreach, Agency Representatives, Existing Plan	S
16	San Ysidro/Puerta México - El Chaparral	United States	San Diego	Bicycle	Bicycle Parking in San Ysidro	Within a three minute walk of the pedestrian queue	Construct additional bicycle parking at the east and west facilities of the San Ysidro POE. Consider secure parking and storage where possible.	City of San Diego, GSA	\$7		Field work	S
17	San Ysidro/Puerta México - El Chaparral	United States	San Diego	Transit	San Ysidro Intermodal Transportation Center (ITC)	Current location of ITC plus additional area	Build an ITC to provide a centralized facility for the Trolley, local and long distance buses, taxis, jitneys, and bicycles adjacent to the San Ysidro POE.	SANDAG	\$138,200	BMP Project Number 3020032, San Ysidro Intermodal Transportation Center	Agency representatives, Border Master Plan	L
18	San Ysidro/Puerta México - El Chaparral	United States	San Diego	Transit	San Ysidro Mobility Hub	Within a three minute walk of the pedestrian queue	Construct a mobility hub near the POE. Mobility hubs offer a variety of mobility services at one location such as shared vehicles and bicycles, bicycle parking, and shuttle and jitney services. Bicycle share is recommended; other appropriate services at this location dependent on further study.	City of San Diego	\$750 (Bike share only)	Can incorporate BMP Project No. 5020002, Border BikeShare.	Agency representatives, Existing Plan	S
19	San Ysidro/Puerta México - El Chaparral	United States	San Diego	Transit	Pedicab Passenger Pick-Up/Drop-Off Zone	East San Ysidro Blvd north of San Ysidro ITC	As an interim improvement, add signage and paint curb to designate pedicab pick-up/drop-off zone north of the existing San Ysidro Intermodal Transportation Center.	City of San Diego	\$8	Pedicab pick-up/drop-off location included in BMP Project No.3020032, San Ysidro Intermodal Transportation Center.	Agency representatives	S
Otay Mesa/Mesa de Otay												
20	Otay Mesa/Mesa de Otay	Mexico	Tijuana	Pedestrian	Bldv Garita de Otay Pedestrian Bridge	Bldv Garita de Otay	Construct east-west pedestrian bridge over Blvd Garita de Otay.	SIDUE, Ayuntamiento de Tijuana	\$1,440	BMP Project No. 6070001, Pedestrian bridge and pick-up/drop-off location.	Public outreach, Agency representatives, Field work, Existing plan	L
21	Otay Mesa/Mesa de Otay	Mexico	Tijuana	Pedestrian	Colina del Sol Multi-Purpose Path	Colina del Sol from Sor Juana Inés de la Cruz to Blvd de las Bellas Artes	Construct a multi-purpose path in the median between Calle Colina del Sol and Calle Josefina Rendón Parra from Av Sor Juana Inés de La Cruz to Boulevard de las Bellas Artes.	SIDUE, Ayuntamiento de Tijuana	\$189		Field work, Agency representatives	S
22	Otay Mesa/Mesa de Otay	Mexico	Tijuana	Pedestrian	Bldv Garita de Otay Interim Pedestrian Crossing and Two-Way Turnstile Removal	Bldv Garita de Otay	Add interim solution for pedestrian crossing across Boulevard Garita de Otay until pedestrian bridge project is completed. Remove two-way turnstile on Blvd Garita de Otay which creates a barrier to northbound pedestrian traffic crossing the vehicle SENTRI lane to access pedestrian processing.	SIDUE	\$8	Maintain interim pedestrian crossing until BMP Project No. 6070001, Pedestrian bridge and pick-up/drop-off location is built.	Field work	S
23	Otay Mesa/Mesa de Otay	Mexico	Tijuana	Pedestrian	Mesa de Otay Pedestrian Pathway Enhancements	Bldv de las Bellas Artes to pedestrian processing	Add restrooms, water fountains, benches, information kiosks, informational and directional signage, lane segmentation, lighting, and shade for pathways and transit areas. Add additional shade for queuing area. Add pedestrian-friendly crossing just south of southbound border crossing.	SIDUE, INDAABIN, Aduanas	\$1,929	Some items assumed be included in BMP Project No. 4070010, Expansion and reorganization of the cargo and passenger facilities at Mesa de Otay, Tijuana.	Public outreach, Agency representatives, Field work	L
24	Otay Mesa/Mesa de Otay	Mexico	Tijuana	Pedestrian	Boulevard Garita de Otay Sidewalk Improvements	Bldv Garita de Otay from Blvd de las Bellas Artes to pedestrian processing	Construct pedestrian sidewalk ramps and missing sidewalk and crosswalks.	SIDUE	\$145		Field work	S
25	Otay Mesa/Mesa de Otay	Mexico	Tijuana	Pedestrian	Boulevard de las Bellas Artes Crosswalk Improvements	Intersection of Blvd de las Bellas Artes and Calle Garita de Otay SENTRI	Enhance pedestrian crosswalk visibility, accessibility, and safety where the sidewalk on the east side of Boulevard Aztecas N intersects with Calle Garita de Otay SENTRI.	SIDUE	\$7		Field work	S
26	Otay Mesa/Mesa de Otay	Mexico	Tijuana	Bicycle	Mesa de Otay Bicycle Border Crossing	POE	Create northbound and southbound bicycle-only inspection lanes with appropriate amenities. Appropriate amenities depend on whether lanes are designed for mounted bicyclists or bicyclists who are dismounted and crossing as pedestrians.	INDAABIN, Aduanas	\$300		Public outreach, Agency Representatives	L

# Pedestrian and Bicycle Transportation Access Study Project Recommendations <sup>1</sup>

Project Number	Port of Entry (POE)	Country	Jurisdiction	Type	Project Name	Limits	Project Description	Agency Stakeholder	Cost (\$1,000) <sup>2</sup>	Related Plans and Programs <sup>3</sup>	Source of Recommendation	Short-Term or Long-Term <sup>4</sup>
27	Otay Mesa/Mesa de Otay	Mexico	Tijuana	Bicycle	Bicycle Routes in Mesa de Otay, Tijuana	Various	Construct bicycle routes in Mesa de Otay, Tijuana and install bicycle-related signage.	SIDUE, Ayuntamiento de Tijuana	\$60		Public outreach	S
28	Otay Mesa/Mesa de Otay	Mexico	Tijuana	Bicycle	Bicycle Parking in Mesa de Otay, Tijuana	Within a three minute walk of the pedestrian queue	Construct bicycle parking at the POE. Consider secure parking and storage where possible.	SIDUE, Ayuntamiento de Tijuana	\$7		Field work	S
29	Otay Mesa/Mesa de Otay	Mexico	Tijuana	Transit	Colina del Sol Pick-Up/Drop-Off Zone and Transit Stop	Colina del Sol, west of intersection of Sor Juana Inés de la Cruz and Josefina Rendón Parra	Create a passenger pick-up/drop-off zone and transit facility near the northbound pedestrian queuing area. Include shade, lighting, benches, and informational and directional signage.	SIDUE, Ayuntamiento de Tijuana, INDAABIN	\$385	BMP Project No. 6070001, Pedestrian bridge and pick-up/drop-off location.	Public outreach, Field work, Existing plan	S
30	Otay Mesa/Mesa de Otay	Mexico	Tijuana	Vehicle	Bldv Garita de Otay Traffic Control	Bldv Garita de Otay	Add traffic control to prevent wrong-way driving due to passenger drop-off on Blvd Garita de Otay SENTRI lane.	SIDUE	\$9		Field work	S
31	Otay Mesa/Mesa de Otay	United States	San Diego	Pedestrian	Pedestrian Bridge – Northbound Ramp	Pedestrian bridge to pedestrian path south of Nicola Tesla Ct	In the absence of new pedestrian bridge projects, add northbound pedestrian ramp to existing pedestrian bridge.	GSA	\$780	Otay Mesa Intermodal Transportation Center plans identified in South Bay BRT EIR include a new pedestrian bridge proposed by GSA from US inspections with northbound and southbound ramps. Paseo de la Amistad Pedestrian and Bike International Border Crossing project also identifies a pedestrian bridge project including northbound pedestrian access.	Public outreach	S
32	Otay Mesa/Mesa de Otay	United States	San Diego	Pedestrian	Paseo de la Amistad Pedestrian and Bike International Border Crossing	Various locations	Improve Paseo Internacional with new, expanded sidewalk and bicycle lane, widen sidewalk and improve existing pick-up/drop-off point at Via de la Amistad, and add pedestrian amenities (Phase 1). Construct a transit center west of SR 905 and improve Nicola Tesla Ct cul de sac (Phase 2). Construct a pedestrian bridge for north-south pedestrian traffic along west side of SR 905 (Phase 3). This is a TEA project that remains viable if TEA program or other funding becomes available.	Caltrans	\$2,060	Otay Mesa Intermodal Transportation Center plans identified in South Bay BRT EIR also include a transit center on the west side of SR 905.	Public outreach, Agency representatives, Field work	L
33	Otay Mesa/Mesa de Otay	United States	San Diego	Pedestrian	Paseo Internacional Sidewalk Improvements and Sidewalk Construction	Pedestrian processing to Roll Drive	Add pedestrian crossing north of POE. In the absence of Paseo de la Amistad Pedestrian and Bike International Border Crossing project, also construct sidewalk on east side of Paseo Internacional and add pedestrian ramps on west side of Paseo Internacional.	GSA, Caltrans	\$30	Sidewalk improvements also included in Paseo de la Amistad Pedestrian and Bike International Border Crossing project.	Public outreach, Field work	S
34	Otay Mesa/Mesa de Otay	United States	San Diego	Pedestrian	Otay Mesa Pedestrian Pathway Enhancements	Pedestrian processing to Roll Drive, pedestrian processing to Nicola Tesla Ct	Add water fountains, restroom, benches, information kiosk, informational and directional signage, and lighting. Add additional shade for pathways, queuing area, waiting areas, and transit areas. Add shelters, additional benches, and lighting for bus stops.	GSA, CBP, SANDAG, MTS, City of San Diego	\$542	Some items also included in Paseo de la Amistad Pedestrian and Bike International Border Crossing project.	Public outreach, Agency representatives, Field work	L
35	Otay Mesa/Mesa de Otay	United States	San Diego	Bicycle	Otay Mesa Bicycle Border Crossing	POE	Create northbound and southbound bicycle-only inspection lanes with appropriate amenities. Appropriate amenities depend on whether lanes are designed for mounted bicyclists or bicyclists who are dismounted and crossing as pedestrians.	GSA, CBP	\$300		Public outreach, Agency Representatives	L
36	Otay Mesa/Mesa de Otay	United States	San Diego	Bicycle	Bicycle Routes in Otay Mesa	Various	Construct planned bicycle routes in Otay Mesa. Additionally, construct routes to establish connections between planned routes and the POE. Install bicycle-related signage.	City of San Diego, GSA	\$242	Planned routes described in San Diego Regional Bicycle Plan, City of San Diego Bicycle Plan Update, and Otay Mesa Community Plan; includes BMP Project No. 5020014, SR 125 Corridor.	Public outreach, Agency Representatives, Existing Plan	S
37	Otay Mesa/Mesa de Otay	United States	San Diego	Bicycle	Bicycle Parking in Otay Mesa	Within a three minute walk of the pedestrian queue	Construct bicycle parking at the POE. Consider secure parking and storage where possible.	City of San Diego, GSA	\$7		Field work	S
38	Otay Mesa/Mesa de Otay	United States	San Diego	Transit	Otay Mesa Intermodal Transportation Center (ITC) and Pedestrian Bridge	Parcel southeast of Nicola Tesla Ct	Construct planned ITC south of Nicola Tesla Ct. Construct planned pedestrian bridge from northbound pedestrian inspections.	SANDAG, GSA	\$7,600 (Does not include bridge)	Otay Mesa Intermodal Transportation Center identified in South Bay BRT EIR. ITC and pedestrian bridge also included in Paseo de la Amistad Pedestrian and Bike International Border Crossing Project.	Public outreach, Field work, Existing plan	L



# Pedestrian and Bicycle Transportation Access Study Project Recommendations <sup>1</sup>

Project Number	Port of Entry (POE)	Country	Jurisdiction	Type	Project Name	Limits	Project Description	Agency Stakeholder	Cost (\$1,000) <sup>2</sup>	Related Plans and Programs <sup>3</sup>	Source of Recommendation	Short-Term or Long-Term <sup>4</sup>
39	Otay Mesa/Mesa de Otay	United States	San Diego	Vehicle	SR 905 Safety Enhancements	SR 905 north of vehicle processing facility	Add safety enhancements on SR 905 to prevent passenger drop-off.	Caltrans, GSA, CBP	\$8		Agency representatives	S
40	Otay Mesa/Mesa de Otay	United States	San Diego	Vehicle	Roll Drive Passenger Pick-Up/Drop-Off Zone	Intersection of Roll Drive and Via de la Amistad	In the absence of Via de la Amistad pick-up/drop-off improvements identified in Paseo de la Amistad Pedestrian and Bike International Border Crossing project, re-paint curb to create official and sufficient passenger pick-up/drop-off zone at southwestern edge of Roll Drive. Add trees, benches, lighting, and directional signage.	City of San Diego	\$42	Drop-off/pick-up zone improvements also included in Paseo de la Amistad Pedestrian and Bike International Border Crossing project.	Public outreach, Field work	S
Tecate/Tecate												
41	Tecate/Tecate	Mexico	Tecate, Baja California	Pedestrian	Tecate, Baja California Pedestrian Pathway Enhancements and Passenger Pick-Up/Drop-Off Zone	Intersection of Callejón Francisco I Madero and Presidente Lázaro Cárdenas	Add water fountain, benches, information kiosk, shade for waiting area, and informational signage. Add additional lighting and directional signage. Create a protected passenger pick-up/drop-off zone at the intersection of Callejón Francisco I Madero and Presidente Lázaro Cárdenas.	SIDUE	\$199		Public outreach, Agency representatives, Field work	S
42	Tecate/Tecate	Mexico	Tecate, Baja California	Pedestrian	Tecate, Baja California Sidewalk and Wayfinding Improvements	POE to Av Hidalgo	Construct additional pedestrian sidewalk ramps and crosswalks, install signage, and rehabilitate sidewalk one block east and west of pedestrian processing as well as along Presidente Lázaro Cardenas and along one block of Av Hidalgo.	SIDUE, Ayuntamiento de Tecate	\$145		Field work	S
43	Tecate/Tecate	Mexico	Tecate, Baja California	Bicycle	Tecate, Baja California Bicycle Border Crossing	POE	Create northbound and southbound bicycle-only inspection lanes with appropriate amenities. Appropriate amenities depend on whether lanes are designed for mounted bicyclists or bicyclists who are dismounted and crossing as pedestrians.	INDAABIN, Aduanas	\$300		Public outreach, Agency Representatives	L
44	Tecate/Tecate	Mexico	Tecate, Baja California	Bicycle	Bicycle Routes in Tecate, Baja California	Various	Construct bicycle routes in Tecate, Baja California and install bicycle-related signage.	SIDUE, Ayuntamiento de Tecate	\$213		Public outreach	S
45	Tecate/Tecate	Mexico	Tecate, Baja California	Bicycle	Bicycle Parking in Tecate, Baja California	Within a three minute walk of the pedestrian queue	Construct bicycle parking at the POE. Consider secure parking and storage where possible.	SIDUE, Ayuntamiento de Tecate	\$7		Field work	S
46	Tecate/Tecate	United States	Tecate, California	Pedestrian	SR 188 Pedestrian-Friendly Crossing Improvement	SR 188 at Thing Rd	In the absence of Kumeyaay Crossing at Tecate International Border Crossing, create north-south pedestrian-friendly crossing across SR 188 at intersection of Thing Road.	Caltrans	\$110	Pedestrian crosswalks on and across SR 188 also included in Kumeyaay Crossing at Tecate International Border Crossing project.	Field work, Agency representatives	S
47	Tecate/Tecate	United States	Tecate, California	Pedestrian	Kumeyaay Crossing at Tecate International Border Crossing	SR 188 extending from POE to approximately 1100' north	Replace and widen sidewalk on west side of SR 188 including additional space for pedestrian pathway amenities and signage. Add bike lane. Add pedestrian crosswalks on and across SR 188. This is a TEA project that remains viable if TEA program or other funding becomes available.	Caltrans	\$2,382	This project is identified as Tecate Ped/Transit Facilities in the BMP (BMP Project No. 5020019).	Field work, Agency representatives	L
48	Tecate/Tecate	United States	Tecate, California	Pedestrian	Tecate, California Pedestrian Pathway Enhancements	Border to MTS bus stop on SR 188	Add restrooms, water fountain, informational kiosks, benches, lighting, and informational and directional signage. Add additional benches behind bus stop and bus shelter. Add additional shade for southbound queuing area.	GSA, CBP, Caltrans, MTS	\$326	Some items included in BMP Project No. 5020019, Tecate Ped/Transit Facilities (also called Kumeyaay Crossing at Tecate International Border Crossing project).	Public outreach, Agency representatives, Field work	S
49	Tecate/Tecate	United States	Tecate, California	Bicycle	Tecate, California Bicycle Border Crossing	POE	Create northbound and southbound bicycle-only inspection lanes with appropriate amenities. Appropriate amenities depend on whether lanes are designed for mounted bicyclists or bicyclists who are dismounted and crossing as pedestrians.	GSA, CBP	\$300		Public outreach, Agency Representatives	L
50	Tecate/Tecate	United States	Tecate, California	Bicycle	Bicycle Routes in Tecate, California	Various	Construct bicycle routes in Tecate, California and install bicycle-related signage.	San Diego County, GSA	\$23	Kumeyaay Crossing at Tecate International Border Crossing project includes a bicycle lane on SR 188 for approximately 1100' north of the POE.	Agency representatives	S
51	Tecate/Tecate	United States	Tecate, California	Bicycle	Bicycle Parking in Tecate, California	Within a three minute walk of the pedestrian queue	Construct bicycle parking at the POE. Consider secure parking and storage where possible.	San Diego County, GSA	\$7		Field work	S

# Pedestrian and Bicycle Transportation Access Study Project Recommendations <sup>1</sup>

Project Number	Port of Entry (POE)	Country	Jurisdiction	Type	Project Name	Limits	Project Description	Agency Stakeholder	Cost (\$1,000) <sup>2</sup>	Related Plans and Programs <sup>3</sup>	Source of Recommendation	Short-Term or Long-Term <sup>4</sup>
52	Tecate/Tecate	United States	Tecate, California	Transit	Increase Route 894 Frequency	-	Increase frequency of Route 894 with service to and from Tecate.	MTS	N/A		Public outreach, Field work, Agency representatives	S
53	Tecate/Tecate	United States	Tecate, California	Vehicle	Tecate, California Passenger Pick-Up/Drop-Off Zone	SR 188	Create a passenger pick-up/drop-off zone outside of CBP pedestrian processing facility. Add bench, shade, lighting, and signage.	Caltrans, GSA, CBP	\$47		Field work	S
Calexico West/Mexicali I												
54	Calexico West/Mexicali I	Mexico	Mexicali	Pedestrian	Mexicali I Tunnel Modification	Pedestrian tunnel	As an interim improvement, resolve flooding issues and improve ventilation in pedestrian tunnel.	INDAABIN	\$123	BMP Project No. 4010001, Mexicali I – Pedestrian Processing Facility, will construct a new pedestrian processing facility.	Public outreach, Field work, Agency representatives	S
55	Calexico West/Mexicali I	Mexico	Mexicali	Pedestrian	Mexicali I Pedestrian Pathway Enhancements	Agustin Melgar to POE and Callejón Zorilla to POE	As interim improvements, add water fountain, information kiosk, and informational signage. Add additional benches, shade for queuing area and waiting area, lighting, and directional signage. Add benches, shade, signage, and lighting for transit stop.	INDAABIN, Aduanas, SIDUE, Ayuntamiento de Mexicali, IMIP	\$112	Some items included in BMP Project No. 5040002, Pedestrian Path Shade Structures. BMP Project No. 4040005, Mexicali I – Pedestrian Processing Facility, will construct a new pedestrian processing facility.	Public outreach, Agency representatives, Field work	S
56	Calexico West/Mexicali I	Mexico	Mexicali	Pedestrian	Mexicali Pedestrian-Friendly Crossing Improvements, Sidewalk Improvements, and Sidewalk Maintenance	Various intersections	Add pedestrian-friendly crossing at intersections of Blvd Adolfo López Mateos with Av Francisco Madero and Ignacio Manuel Altamirano. Add pedestrian sidewalk ramps and crosswalks and conduct sidewalk maintenance on Agustín Melgar, Zorilla, Blvd Adolfo López Mateos, Ignacio Manuel Altamirano, and Av Francisco Madero.	Ayuntamiento de Mexicali	\$725		Public outreach, field work	S
57	Calexico West/Mexicali I	Mexico	Mexicali	Bicycle	Mexicali I Bicycle Border Crossing	POE	Create northbound and southbound bicycle-only inspection lanes with appropriate amenities. Appropriate amenities depend on whether lanes are designed for mounted bicyclists or bicyclists who are dismounted and crossing as pedestrians.	INDAABIN, Aduanas	\$300		Public outreach, Agency Representatives	L
58	Calexico West/Mexicali I	Mexico	Mexicali	Bicycle	Bicycle Routes in Mexicali	Various	Construct planned bicycle routes in Mexicali; consider implementation of some facilities as bicycle lanes. Additionally, construct routes to establish connections between planned routes and the POE. Install bicycle-related signage.	Ayuntamiento de Mexicali, SIDUE	\$480	Planned routes described in Proyecto de Rutas Ciclistas para Mexicali; includes BMP Project No. 5040003, Rio Nuevo Bike Lane Phase I.	Public outreach, Agency Representatives, Existing Plan	S
59	Calexico West/Mexicali I	Mexico	Mexicali	Bicycle	Bicycle Ramp for Mexicali I Tunnel	Pedestrian tunnel	As an interim improvement, construct bicycle ramp alongside western stairway to facilitate bicycle users entering and exiting pedestrian tunnel.	INDAABIN, SIDUE	\$38	BMP Project No. 4010001, Mexicali I – Pedestrian Processing Facility, will construct a new pedestrian processing facility.	Public outreach, Field work	S
60	Calexico West/Mexicali I	Mexico	Mexicali	Bicycle	Bicycle Parking in Mexicali	Within a three minute walk of the pedestrian queue	Construct bicycle parking at or near the POE. Consider secure parking and storage where possible.	Ayuntamiento de Mexicali, SIDUE	\$7		Field work	S
61	Calexico West/Mexicali I	Mexico	Mexicali	Transit	Mexicali I Mobility Hub	Within a three minute walk of the pedestrian queue	Construct a mobility hub near the POE. Mobility hubs offer a variety of mobility services at one location such as shared vehicles and bicycles, bicycle parking, and shuttle and jitney services. Bicycle share is recommended; other appropriate services at this location dependent on further study.	Ayuntamiento de Mexicali	\$750 (Bike share only)		Agency representatives	S
62	Calexico West/Mexicali I	Mexico	Mexicali	Vehicle	Passenger Pick-Up/Drop-Off Zone on Callejón Zorilla	Callejón Zorilla north of Callejón Reforma	As an interim improvement, delineate and install signage to add a passenger pick-up/drop-off zone on Callejón Zorilla.	INDAABIN	\$101	BMP Project No. 4010001, Mexicali I – Pedestrian Processing Facility, will reconfigure the roadways surrounding the POE including Callejón Zorilla.	Field work	S
63	Calexico West/Mexicali I	United States	Calexico	Pedestrian	Calexico Border Gateway and 1st Street Promenade	E 1st Street between SR 111 and Heber Ave	Widen sidewalks and add pedestrian amenities on E 1st Street. Improve traffic flow on adjacent streets and add pick-up/drop-off area. This is a TEA project that remains viable if TEA program or other funding becomes available.	Caltrans	\$4,184		Agency representatives	L
64	Calexico West/Mexicali I	United States	Calexico	Pedestrian	Calexico Pedestrian Pathway Enhancements	POE to E 1st Street	As interim improvements, add water fountain, benches, information kiosk, informational and directional signage, and shade for waiting area. Add additional lighting. Add signage and lighting for transit areas.	City of Calexico, GSA, CBP	\$114	BMP Project No. 4010003, Calexico West – Phase 2 of Major Expansion and Reconfiguration, will construct a new pedestrian processing facility. Some items also included in Calexico Border Gateway and 1st Street Promenade project.	Public outreach, Agency representatives, Field work	S
65	Calexico West/Mexicali I	United States	Calexico	Pedestrian	Calexico Pedestrian-Friendly Crossing Improvements and Crosswalk Maintenance	Various intersections between E 1st Street and E 7th Street	Construct pedestrian-friendly crossings at intersections of E 1st Street and Rockwood Ave and E 2nd Street and Rockwood Ave. Repaint crosswalks on Paulin Ave, Rockwood Ave, Heffernan Ave, and Heber Ave.	City of Calexico	\$178	Intersection of E 1st Street and Rockwood Ave also included in Calexico Pedestrian Pathway Enhancements project.	Public outreach, field work	S



# Pedestrian and Bicycle Transportation Access Study Project Recommendations <sup>1</sup>

Project Number	Port of Entry (POE)	Country	Jurisdiction	Type	Project Name	Limits	Project Description	Agency Stakeholder	Cost (\$1,000) <sup>2</sup>	Related Plans and Programs <sup>3</sup>	Source of Recommendation	Short-Term or Long-Term <sup>4</sup>
66	Calexico West/Mexicali I	United States	Calexico	Bicycle	Calexico West Bicycle Border Crossing	POE	Create northbound and southbound bicycle-only inspection lanes with appropriate amenities. Appropriate amenities depend on whether lanes are designed for mounted bicyclists or bicyclists who are dismounted and crossing as pedestrians.	GSA, CBP	\$300		Public outreach, Agency Representatives	L
67	Calexico West/Mexicali I	United States	Calexico	Bicycle	Bicycle Routes in Calexico	Various	Construct planned bicycle routes in Calexico, including New River Parkway project. Additionally, construct routes to establish connections between planned routes and the POE. Install bicycle-related signage.	City of Calexico, GSA	\$480	Planned routes described in County of Imperial Bicycle Master Plan Update, Calexico Bicycle Master Plan, New River Improvement Project strategic plan.	Public outreach, Agency Representatives, Existing Plan	S
68	Calexico West/Mexicali I	United States	Calexico	Bicycle	Bicycle Parking in Calexico	Within a three minute walk of the pedestrian queue	Construct bicycle parking at the POE. Consider secure parking and storage where possible.	City of Calexico, GSA	\$7		Field work	S
69	Calexico West/Mexicali I	United States	Calexico	Transit	Calexico Intermodal Transportation Center (ITC)	E 3rd Street between Rockwood Ave and Heffernan Ave	Construct an ITC in Calexico near the POE including pick-up/drop-off area, bus and shuttle bays, information kiosks, restrooms, water fountains, bicycle storage, and a Greyhound bus facility.	ICTC	\$10,000	BMP Project No. 3010085, Calexico Intermodal Transportation Center.	Public outreach, Agency representatives	L
70	Calexico West/Mexicali I	United States	Calexico	Transit	Calexico West Mobility Hub	Within a three minute walk of the pedestrian queue	Construct a mobility hub near the POE. Mobility hubs offer a variety of mobility services at one location such as shared vehicles and bicycles, bicycle parking, and shuttle and jitney services. Bicycle share is recommended; other appropriate services at this location dependent on further study.	ICTC	\$750 (Bike share only)		Agency representatives	S
Calexico East/Mexicali II												
71	Calexico East/Mexicali II	Mexico	Mexicali	Pedestrian	Mexicali II Pedestrian Pathway Enhancements	Calzada Abelardo L. Rodríguez to pedestrian processing	Add water fountains, benches, information kiosks, lighting, and informational and directional signage. Add shade for queuing areas, waiting area, and pathways. Add additional restroom, crosswalks, and pedestrian sidewalk ramps. Add additional shade for departure pathway. If new, more northerly pick-up/drop-off zone is not constructed, improve existing passenger pick-up/drop-off zone with shade structure, benches, and information kiosk.	INDAABIN, Aduanas, SIDUE	\$1,097		Public outreach, Agency representatives, Field work	L
72	Calexico East/Mexicali II	Mexico	Mexicali	Pedestrian	Calzada Abelardo L. Rodríguez Sidewalk Improvements	Intersection of Abelardo L. Rodríguez and POE access roads	Add pedestrian sidewalk ramps and sidewalk and crosswalks connecting northbound and southbound pedestrian pathways along north side of Calzada Abelardo L. Rodríguez.	SIDUE, IMIP	\$58		Field work	S
73	Calexico East/Mexicali II	Mexico	Mexicali	Bicycle	Mexicali II Bicycle Border Crossing	POE	Create northbound and southbound bicycle-only inspection lanes with appropriate amenities. Appropriate amenities depend on whether lanes are designed for mounted bicyclists or bicyclists who are dismounted and crossing as pedestrians.	INDAABIN, Aduanas	\$300		Public outreach, Agency Representatives	L
74	Calexico East/Mexicali II	Mexico	Mexicali	Bicycle	Bicycle Routes in Mexicali	Various	Construct planned bicycle routes in Mexicali. Additionally, construct routes to establish connections between planned routes and the POE. Install bicycle-related signage.	Ayuntamiento de Mexicali, SIDUE	\$375	Planned routes described in Proyecto de Rutas Ciclistas para Mexicali.	Public outreach, Existing Plan	S
75	Calexico East/Mexicali II	Mexico	Mexicali	Bicycle	Bicycle Parking in Mexicali	Within a three minute walk of the pedestrian queue	Construct bicycle parking at the POE. Consider secure parking and storage where possible.	Ayuntamiento de Mexicali, SIDUE	\$7		Field work	S
76	Calexico East/Mexicali II	Mexico	Mexicali	Vehicle	Mexicali II Passenger Pick-Up/Drop-Off Zone	South of bridge that crosses All-American Canal	Create passenger pick-up/drop-off zone approximately 800' north of current location to reduce pedestrian walking distance to border crossing. Include lighting and informational and directional signage.	INDAABIN, Aduanas, SIDUE	\$580	SIDUE has proposed a similar drop-off zone. Response is pending from the federal government.	Field work, Agency representatives	S
77	Calexico East/Mexicali II	Mexico	Mexicali	Vehicle	Overnight Parking on Calzada Abelardo L. Rodríguez	Calzada Abelardo L. Rodríguez southeast of POE	Create one overnight parking lot on Calzada Abelardo L. Rodríguez southeast of POE.	SIDUE, Ayuntamiento de Mexicali	\$287		Public outreach, field work	S
78	Calexico East/Mexicali II	United States	Imperial County	Pedestrian	Calexico East Pedestrian Path	Pedestrian processing building to 900' north	Add pedestrian path on west side of roadway, adjacent to existing trees. Or, add trees to provide shade to existing sidewalk.	GSA	\$44		Public outreach, Field work	S

# Pedestrian and Bicycle Transportation Access Study Project Recommendations<sup>1</sup>

Project Number	Port of Entry (POE)	Country	Jurisdiction	Type	Project Name	Limits	Project Description	Agency Stakeholder	Cost (\$1,000) <sup>2</sup>	Related Plans and Programs <sup>3</sup>	Source of Recommendation	Short-Term or Long-Term <sup>4</sup>
79	Calexico East/Mexicali II	United States	Imperial County	Pedestrian	Calexico East Pedestrian Pathway Enhancements	Border to SR 7	Add restroom, water fountains, information kiosks, lighting, benches, and informational and directional signage. Add shade and benches for waiting area. Add shade to waiting area, queuing area, and southbound pathway. Create pedestrian-friendly crossing just north of pedestrian processing facility.	GSA, CBP	\$1,072		Public outreach, Agency representatives, Field work	L
80	Calexico East/Mexicali II	United States	Imperial County	Bicycle	Calexico East Bicycle Border Crossing	POE	Create northbound and southbound bicycle-only inspection lanes with appropriate amenities. Appropriate amenities depend on whether lanes are designed for mounted bicyclists or bicyclists who are dismounted and crossing as pedestrians.	GSA, CBP	\$300		Public outreach, Agency Representatives	L
81	Calexico East/Mexicali II	United States	Imperial County	Bicycle	Bicycle Routes in Imperial County	Various	Construct bicycle routes in Imperial County and install bicycle-related signage.	Imperial County, GSA	\$163		Public outreach, Agency Representatives	S
82	Calexico East/Mexicali II	United States	Imperial County	Bicycle	Bicycle Parking in Imperial County	Within a three minute walk of the pedestrian queue	Construct bicycle parking at the POE. Consider secure parking and storage where possible.	Imperial County, GSA	\$7		Field work	S
83	Calexico East/Mexicali II	United States	Imperial County	Transit	Calexico East Intermodal Transportation Center (ITC) and Relocation of Southbound Pedestrian Pathway Access	Potentially at parcel located at split of SR 7 northbound and southbound vehicle lanes, or other location as appropriate	Create an ITC and include shade, lighting, benches, and restroom. Add pedestrian-friendly crossings across northbound and southbound SR 7 to connect northbound and southbound pedestrian pathways adjacent to the ITC. Consider providing connections to other transit routes within Imperial County.	GSA, CBP, Caltrans, ITC	\$5,000	BMP Project No. 3010086, Calexico East Intermodal Transportation Center.	Public outreach, Field work, Agency representatives, Existing plan	L
84	Calexico East/Mexicali II	United States	Imperial County	Vehicle	Calexico East Passenger Pick-Up/Drop-Off Zone	Southern terminus of Menvielle Rd	As an interim improvement, create a passenger pick-up/drop-off zone at the southern terminus of Menvielle Rd. Add benches, signage, a shade structure, and a sidewalk to connect to the northbound pedestrian pathway.	ICTC, Imperial County	\$125	This area could return to a no parking or waiting zone after BMP Project No. 3010086, Calexico East Intermodal Transportation Center is built.	Public outreach, field work	S
85	Calexico East/Mexicali II	United States	Imperial County	Vehicle	Relocate SENTRI Lane	POE	Assign vehicle lane closest to POE (eastern-most northbound lane) as SENTRI lane and create SENTRI pedestrian drop off on curb adjacent to northbound pedestrian entrance to POE. This project is contingent on the expansion plans for this POE as it cannot be completed with existing passenger lane configuration.	GSA, CBP, Aduanas, INDAAABIN	N/A		Public outreach, field work	L
Andrade/Los Algodones												
86	Andrade/Los Algodones	Mexico	Municipality of Mexicali	Pedestrian	Los Algodones Pedestrian Pathway Enhancements	Saratoga, from east of canal to pedestrian processing	Add water fountains, information kiosk, and shade for waiting area. Widen pedestrian sidewalk ramps. Add additional pedestrian sidewalk ramps, benches, shade for northbound queuing area, and informational and directional signage.	Ayuntamiento de Mexicali	\$60	Some items assumed to be included in BMP Project No. 404004, Los Algodones-Andrade Tourist Crossing Modernization.	Public outreach, Agency representatives, Field work	S
87	Andrade/Los Algodones	Mexico	Municipality of Mexicali	Pedestrian	Los Algodones Sidewalk Improvements	Border to 16 de Septiembre	Rehabilitate crosswalks and sidewalk and add one pedestrian sidewalk ramp along the streets Calle 2, 5 de Mayo, and 16 de Septiembre.	Ayuntamiento de Mexicali	\$81		Field work	S
88	Andrade/Los Algodones	Mexico	Municipality of Mexicali	Bicycle	Bicycle Routes in Los Algodones	Various	Construct bicycle routes in Los Algodones and install bicycle-related signage.	SIDUE	\$95		Field work	S
89	Andrade/Los Algodones	Mexico	Municipality of Mexicali	Bicycle	Los Algodones Bicycle Border Crossing	POE	Create northbound and southbound bicycle-only inspection lanes with appropriate amenities. Appropriate amenities depend on whether lanes are designed for mounted bicyclists or bicyclists who are dismounted and crossing as pedestrians.	INDAAABIN, Aduanas	\$300		Public outreach, Agency Representatives	L
90	Andrade/Los Algodones	Mexico	Municipality of Mexicali	Bicycle	Bicycle Parking in Los Algodones	Within a three minute walk of the pedestrian queue	Construct bicycle parking at the POE. Consider secure parking and storage where possible.	SIDUE	\$7		Field work	S
91	Andrade/Los Algodones	United States	Imperial County	Pedestrian	Andrade Pedestrian Pathway Enhancements	Border to SR 186 just north of northbound pedestrian exit	Add waiting area with benches, shade, and information kiosk on eastern side of SR 186. Add informational signage, water fountain, and restroom. Add information kiosk and shade and bench for southbound queuing area. Consider adding designated bus stop/shelter.	Caltrans	\$594	Complements BMP Project No. 5010003, Andrade POE Ped/Transit Facilities.	Public outreach, Agency representatives, Field work	S



# Pedestrian and Bicycle Transportation Access Study Project Recommendations<sup>1</sup>

Project Number	Port of Entry (POE)	Country	Jurisdiction	Type	Project Name	Limits	Project Description	Agency Stakeholder	Cost (\$1,000) <sup>2</sup>	Related Plans and Programs <sup>3</sup>	Source of Recommendation	Short-Term or Long-Term <sup>4</sup>
92	Andrade/Los Algodones	United States	Imperial County	Bicycle	Bicycle Route and Signage in Andrade	Various	Install bicycle wayfinding signage and construct bicycle route in Andrade providing connection to Arizona.	Imperial County	\$458		Public outreach, Agency representatives	S
93	Andrade/Los Algodones	United States	Imperial County	Bicycle	Andrade Bicycle Border Crossing	POE	Create northbound and southbound bicycle-only inspection lanes with appropriate amenities. Appropriate amenities depend on whether lanes are designed for mounted bicyclists or bicyclists who are dismounted and crossing as pedestrians.	GSA, CBP	\$300		Public outreach, Agency Representatives	L
94	Andrade/Los Algodones	United States	Imperial County	Bicycle	Bicycle Parking in Andrade	Within a three minute walk of the pedestrian queue	Construct bicycle parking at the POE. Consider secure parking and storage where possible.	GSA	\$7		Field work	S
95	Andrade/Los Algodones	United States	Imperial County	Vehicle	SR 186 Pullover	SR 186 just north of northbound pedestrian exit	Create shoulder on SR 186 for passenger pick-up and drop-off.	Caltrans	\$188		Field work, Agency representatives	S
Policy Recommendations												
96				Policy	Increase SENTRI Access for Bicyclists and Pedestrians		Increase education about SENTRI and Ready Lanes and create a less costly pedestrian and bicycle-only SENTRI program.				Agency representatives, Existing Study	S
97				Policy	Design Guidelines		Institute or update design guidelines for POEs to guide future construction and modification of border crossings to promote pedestrian-friendly and bicycle-friendly infrastructure. See design guidelines appendix of the Pedestrian and Bicycle Transportation Access Study for recommendations.				Field work, Agency representatives	L
98				Policy	Operable Bicycles in Bicycle Border Crossing Lanes		A bicycle must be ridden to the crossing in order for the bicyclist to cross in the bicycle border crossing lane. If bicycle is not operable, the individual will have to cross the border through pedestrian inspection.				Agency representatives	S
99				Policy	Landscaping and Public Art		Add landscaping and public art to all border crossings.				Public outreach, Field work	L
100				Policy	Thirty Minute Wait Times		Strive for maximum 30 minute wait times at all ports up to primary inspection facility, with expedited service for the elderly and disabled.				Public outreach	S
101				Policy	Senior/Disability Lanes		Study feasibility of instituting pedestrian crossing lanes for senior citizens and the disabled at existing and future ports.				Public outreach, Agency representatives, Field work	L
102				Policy	Maintenance Districts		Explore the creation of Maintenance Commitments executed through a Memorandum of Understanding that prioritizes maintenance of influence areas around all POEs.				Field work	L

<sup>1</sup> Projects are organized by POE, country, and project type

Details of all recommended projects can be found in Appendix H

See Appendix L for glossary of acronyms

<sup>2</sup> All cost estimates in US Dollars. Line-item details can be found in Appendix H

<sup>3</sup> BMP = California/Baja California 2014 Border Master Plan Update

<sup>4</sup> Identification of short-term and long-term projects is representative of a revenue-unconstrained scenario where funding is available for all projects.

S = Short Term - less than 5 year. Does not involve significant alteration of the infrastructure or POE operations.

L=Long Term - greater than 5 years. Involves significant alteration of the infrastructure or POE operations.

N/A = Not Applicable