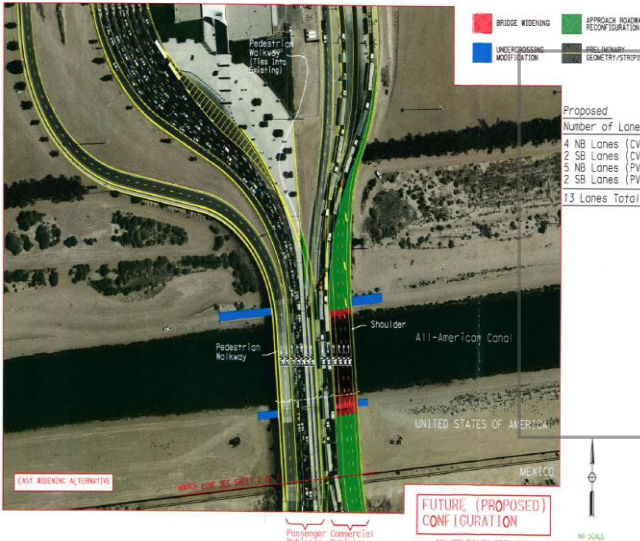
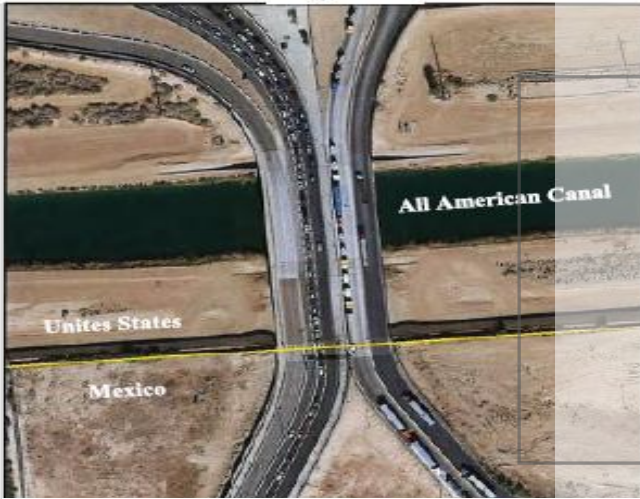




CALEXICO EAST PORT OF ENTRY BRIDGE WIDENING PROJECT

July 7, 2020

Calexico East Port of Entry Bridge Widening Project



Project Goals

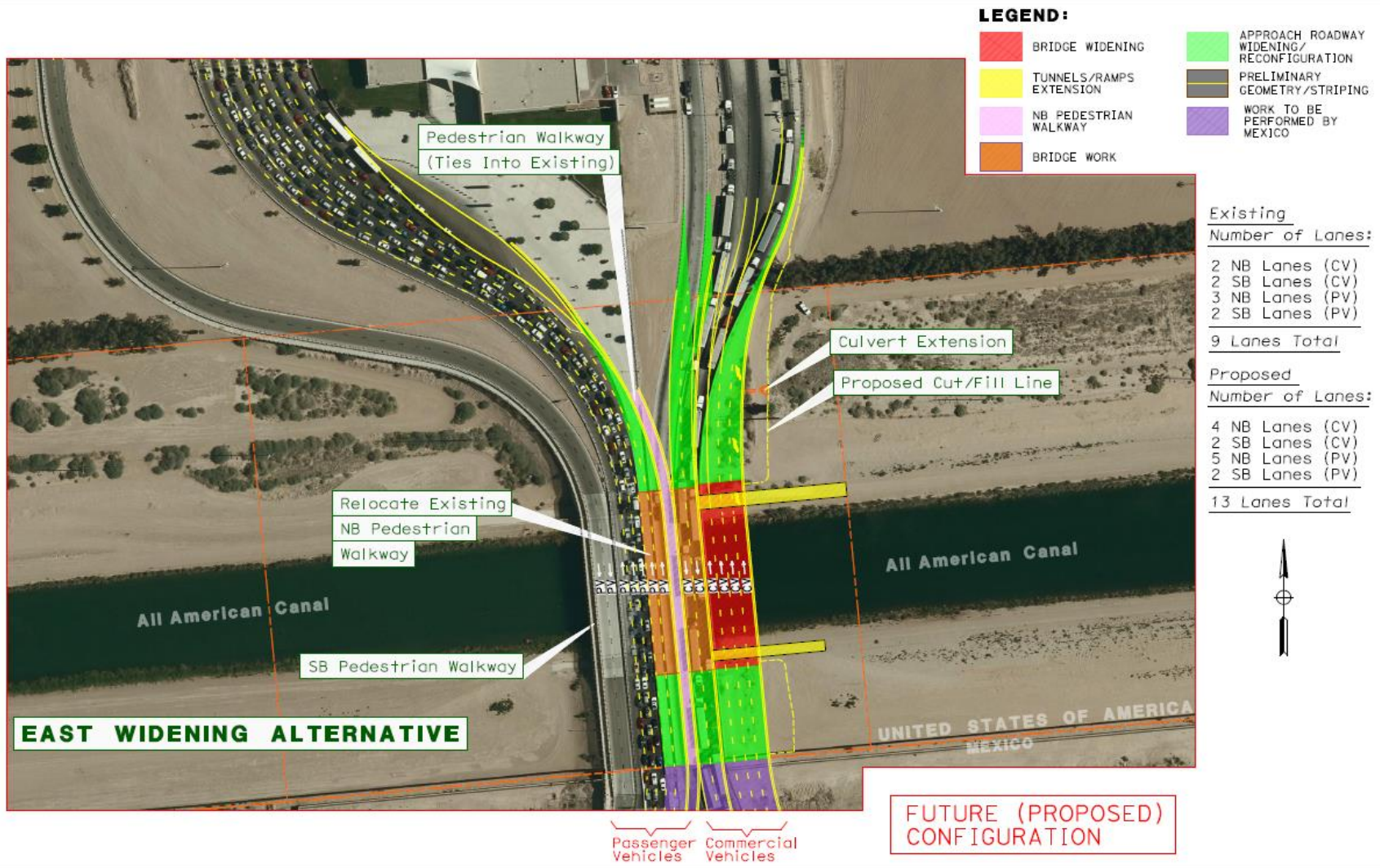
The Project will widen the existing Calexico East Port of Entry (POE) Bridge over the All-American Canal at the USA/Mexico Border to facilitate traffic flow to the existing U.S. federal primary inspection booths, and to reduce delays, idling times, and improve air quality emissions.



Project Description

- The Project will widen the Bridge on its east side to minimize traffic impacts during construction and reduce construction costs.
- The project will add four northbound lanes; two commercial vehicle lanes and two passenger vehicle lanes.
- The existing northbound pedestrian walkway will be shifted to the west to facilitate the addition of the two new northbound passenger vehicle lanes.
- The Project will also add new concrete barriers and minor modifications to existing landscaping, drainage, signage, and lighting.

PLANNED BRIDGE EXPANSION CONCEPT AT CALEXICO EAST PORT OF ENTRY



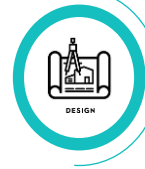
PROJECT SCHEDULE

October 2022



Completion of Construction

February 2021



Notice to Proceed with Design-Build

November 20, 2020



RFP Proposal Due Date

August 12, 2020



Scheduled issuance of RFP to short-list

July 1, 2020



SOQ due date for Proposers

May 26, 2020



Caltrans Project Report and Project Approval

May 20, 2020



RFQ / SOQ solicitation released

April 13, 2020

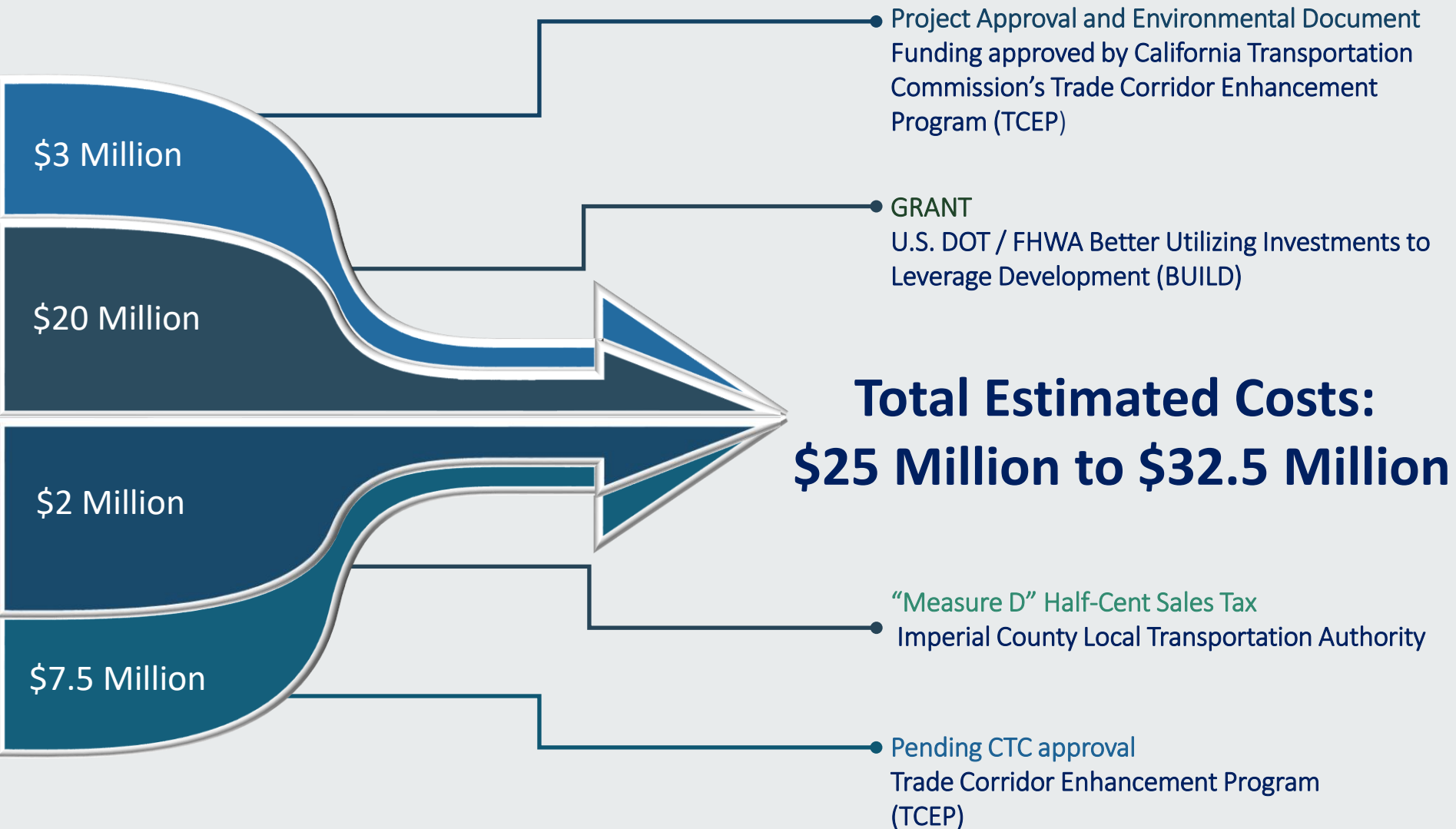


National Environment Policy Act (NEPA) environment document was approved

PROJECT STATUS

The Imperial County Transportation Commission (ICTC) will complete the project using a combined Design-Build delivery method. ICTC will use a two-phase procurement process to select a design-builder team to deliver the project: Phase 1, Request for Qualifications (RFQ) to receive Statements of Qualifications (SOQ); and Request for Proposals to short-listed Proposer teams.

PROJECT COSTS AND FUNDING



Thank You