

Calexico East Land Port of Entry County of Imperial, CA

May 2014

Fact Sheet: Expansion of Truck and Auto Inspection Lanes at the Existing LPOE

Goals of the Project

The purpose of this project is to increase capacity at both the auto and commercial truck inspection services at the Calexico East LPOE, decrease wait times, provide a significant stimulus to the declining local economy, create additional jobs and substantially reduce localized vehicle-generated air pollution.

Currently, the Calexico East LPOE has a total of three northbound lanes for commercial vehicles (trucks) and eight northbound lanes for the primary processing of Passenger Operated Vehicles (POVs are autos, bus and recreational vehicles) entering the U.S. Calexico East is the primary truck crossing since its opening in 1996 and the closing of commercial vehicle operations at Calexico West. Since 1996, the volume of crossings by truck, autos and pedestrians being processed has increased significantly. This increase can be attributed to number of factors including: substantial growth to industrial and residential developments in the eastern portion of Mexicali; an increase in farm worker's transportation; the extension of State Route 7 (SR-7) and direct connection with Interstate 8; the Calexico East/Mexicali II port's ability to bypass the most congested portion of downtown Mexicali; and the longer delays at the Calexico West/Mexicali I port.

Regional Needs

The Calexico East port is the principal gateway for trade by truck through Imperial Valley and the Mexican State of Baja California with origins and destinations throughout California, other U.S. states and international markets. In 2012, the port processed \$5.8 Billion in exports and \$7.0 Billion in imports, ranking 7th across U.S. truck crossings. On an average day, over 32,000 privately operated vehicles and 2,400 trucks travel through this port, north and southbound. The existing facilities are undersized relative to its original capacity when opened in late 1996. Delays are causing significant impact to the Imperial Valley and U.S. economy.

Project Scope

The project proposes to add three to four new northbound truck lanes, this will double the capacity for a total of six new truck inspection lanes. The project also proposes to add six new northbound auto lanes for a total of 14 auto inspection lanes. All new lanes will be built with required security inspection technology, inspection booths, canopies, concrete paving and related security/administration building improvements. The project concept also proposes to widen the bridge over the All American Canal. By widening this bridge, delays will be further reduced as this current bottleneck will be improved. Preliminary project costs for U.S. improvements are estimated at a range of \$60 million to \$75 million, pending detailed needs and engineering analysis.

Project Status

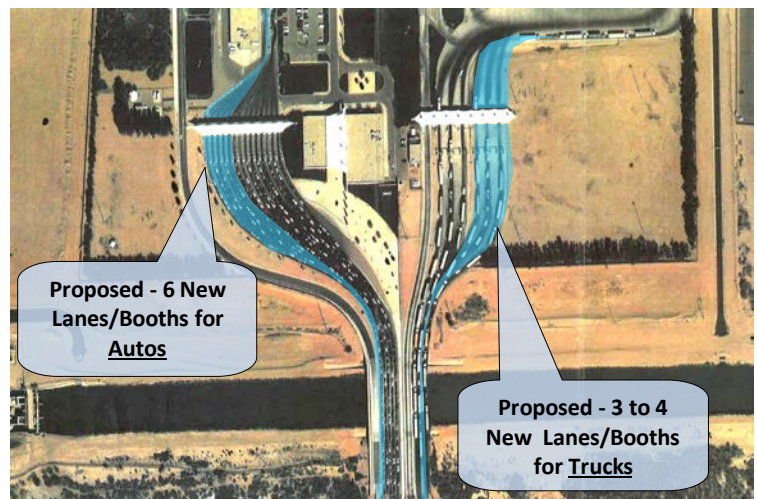
The project is identified as a priority for LPOE short-term operational improvements in the 2014 California-Baja California Border Master Plan.

Funding

The schedule for appropriation of construction funds remains uncertain. The Imperial Valley regional stakeholders are pursuing the potential to include these improvements as part of a regional and federal government effort to complete a **"Binational Partnership – Toll Pilot Project"** to finance and complete U.S. and Mexico improvements at the Calexico East/Mexicali II LPOEs. Concept is to toll new lanes with existing lanes remaining as free option.

Partners*

- U.S. Customs and Border Protection (CBP)
- U.S. General Services Administration (GSA)
- U.S. Federal Highway Administration (FHWA)
- MX Secretariat of Communication and Transportation (SCT)
- State of Baja California's Planning & Transportation (SIDUE)
- California Department of Transportation (Caltrans)
- City of Calexico
- City of Holtville
- County of Imperial
- Imperial County Transportation Commission (ICTC)
- Imperial Valley Economic Development Corporation (IVEDC)
- Southern California Association of Governments (SCAG)



Planned Expansion Concept at Calexico East LPOE

ICTC Contact: Mark Baza, ICTC Executive Director
or Virginia Mendoza (760) 592-4494